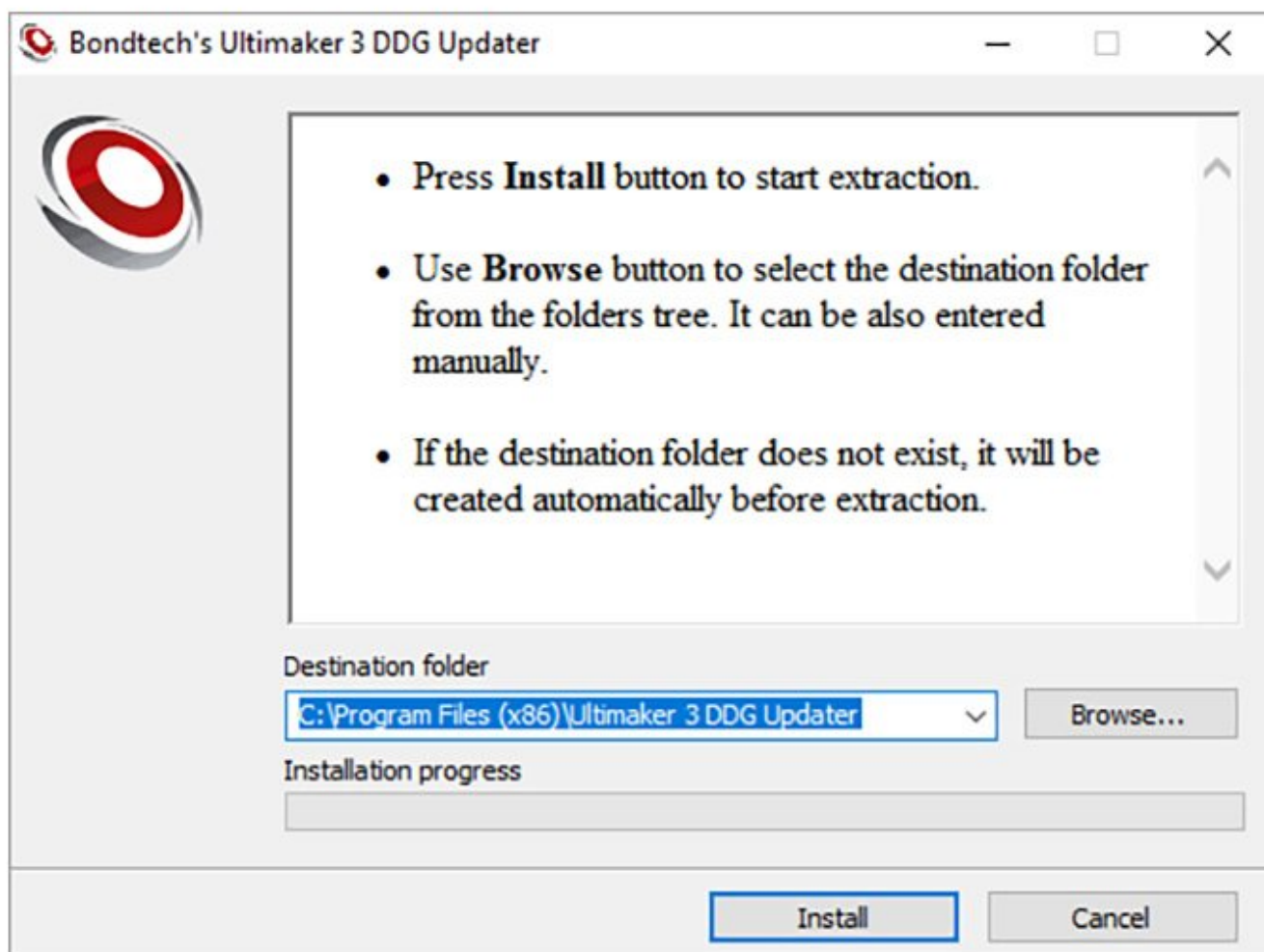




## 11. DDG Software Configuration

In this guide we will tell you how you can update Ultimaker 3's firmware just by running our app that does the Update for you.

Written By: Nuno Santiago



## INTRODUCTION

# Bondtech's Product Page

This Guide relates to this DDG for Ultimaker 2+ and 3 Upgrade Kit:

<https://www.bondtech.se/en/product/ddg-e...>

## Introduction

This guide is provided to assist you finishing installing a Bondtech upgrade that requires a firmware update of your 3D printer. The firmware update will be performed by the application this guide refers to. No more need to manually search, edit and update the firmware.

## Scope of Application

Applies to the following Application:

- Ultimaker 3 DDG Updater

Applies to the following Operative System:

- Windows

Applies to the following Operative System Environment:

- **JRE (Java Runtime Environment) must be installed**

Applies to the following Bondtech product:

- DDG Extruder

Applies to the following 3D printers:

- Ultimaker 3; Ultimaker 3 Extended

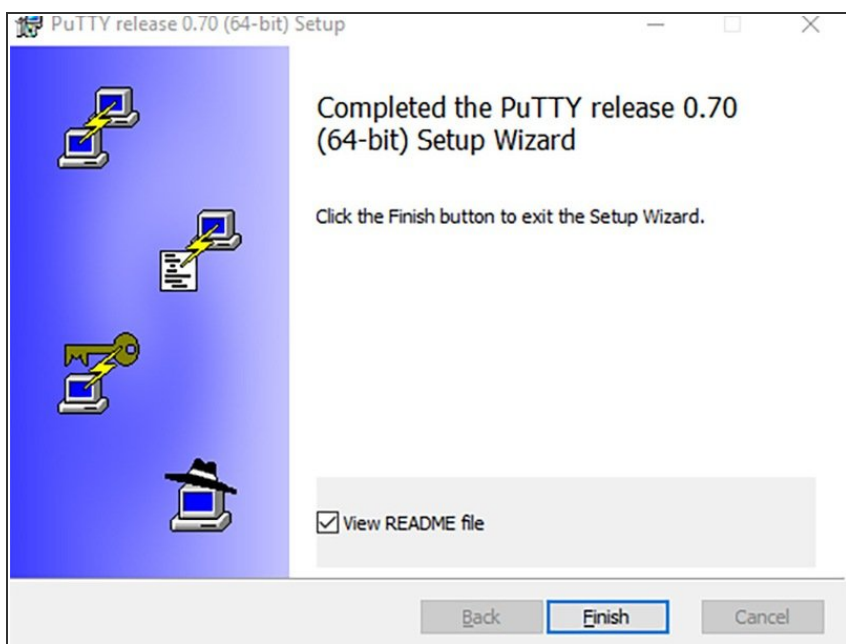
**NOTE: Do not attempt to perform this procedure using this app, with any other Bondtech product; 3D printer; or Operative System.**

## Scope of Intervention

The following 3D printer's firmware parameters will be adjusted:

- Default Steps per mm (default\_steps\_per\_mm, set to 311.0)
- Bowden Tube Length (bowden\_tube\_length, set to 730)
- Filament Feeding Speed (\_\_\_LONG\_MOVE\_SPEED, set to 70)

## Step 1 — Is PuTTY Installed?



- Make sure you have PuTTY installed in your PC.
- If you haven't, follow our guide:
- [How to install PuTTY in Windows](#)

## Step 2 — Identify The Printers IP Address



- ⚠ Make sure the printer:
  - **is ON**
  - **is connected to your WiFi/LAN**
  - **and on Developer Mode to show its IP address.**
- Once connected the printer's display should show his IP address in the start layout of the user interface.
- ⓘ Note that your printer can display a different IP than the one shown in the picture. It will depend on how your LAN is setup.
- ⚠ **Take note of the IP address.** You will need it in Step 6.

## Step 3 — Activate Developer Mode (optional)

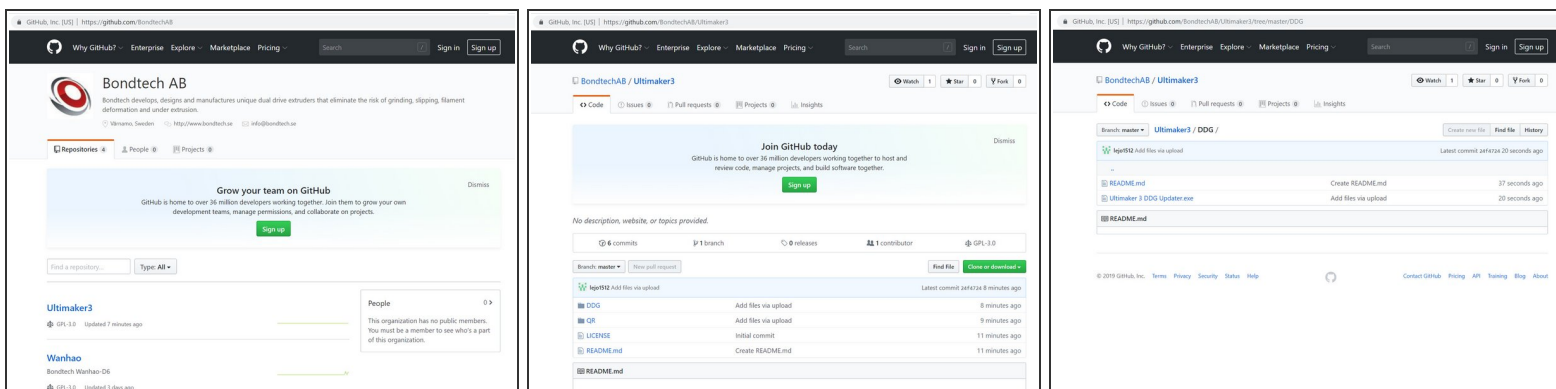


**⚠ If you are connected to your network, and no IP address is showing in the main screen**

**i** proceed this way':

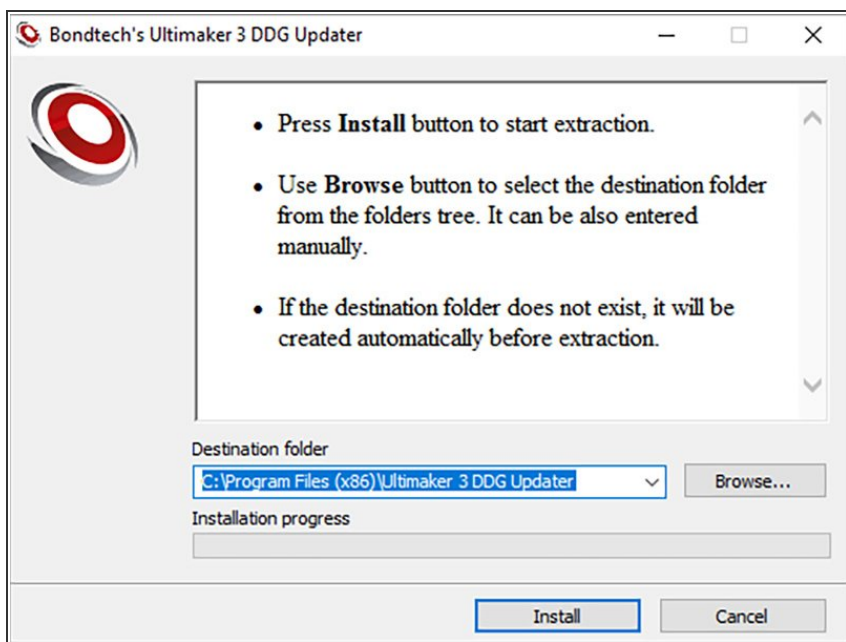
- Activate Developer mode by following these steps:
- Navigate the menu SYSTEM>Maintenance>Diagnostics>Developer mode
- In the next screen, select YES to enable remote login to the printer.
- The printer will reboot and show the DEV and IP address in the top line of the main screen.

## Step 4 — Download Ultimaker 3 DDG Updater



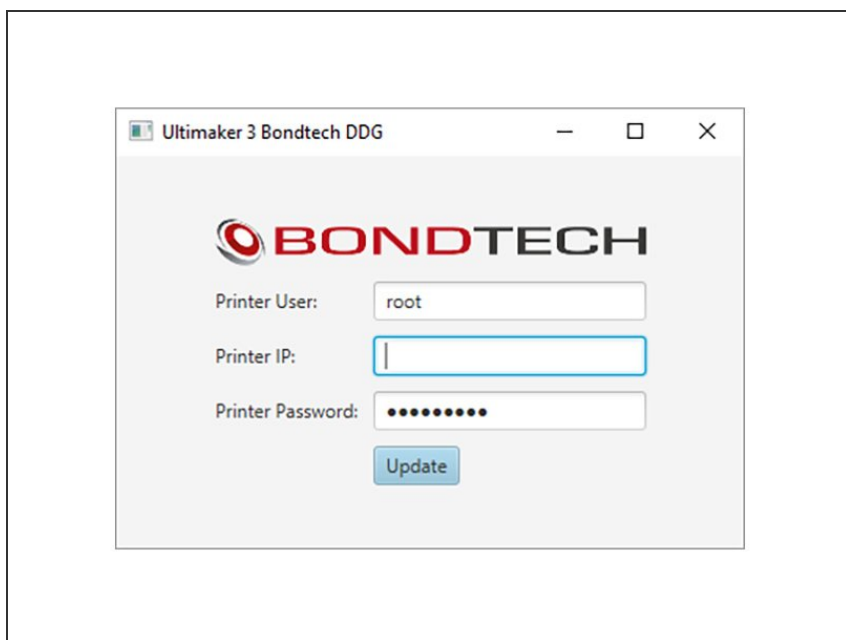
- Download our Ultimaker 3 DDG Updater:
- [Click here to download it](#)

## Step 5 — Run The DDG Updater



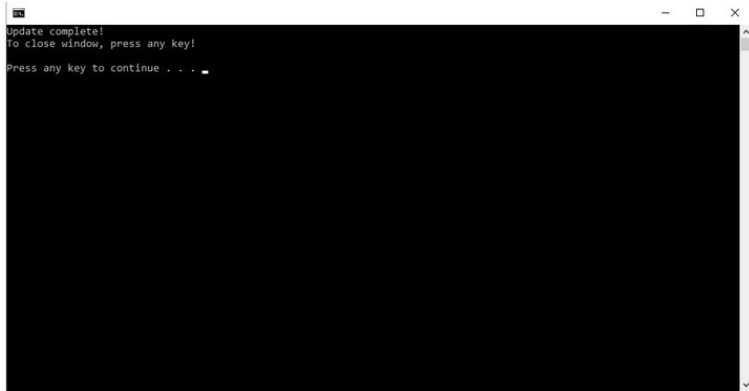
- Run the «Ultimaker 3 DDG Updater» executable file.
- Allow for the application to make changes in your device when requested.
- Accept or change where the installer will place the required files.
- Click Install

## Step 6 — Login And Update



- In the upcoming interface input the required data.
- **Use the IP provided by the 3D printer interface.**
- ① For your convenience the default user and password of the Ultimaker 3 are already set.
- ① If you have changed these values please replace them with the updated ones.
- Click Update.

## Step 7 — Finishing Update



```
Update complete!  
To close window, press any key!  
Press any key to continue . . .
```

- A CMD window will be open during the update.
- After “Update Complete!” you can close the window.
- **You are ready to use the Bondtech DDG extruders on your Ultimaker 3!!**