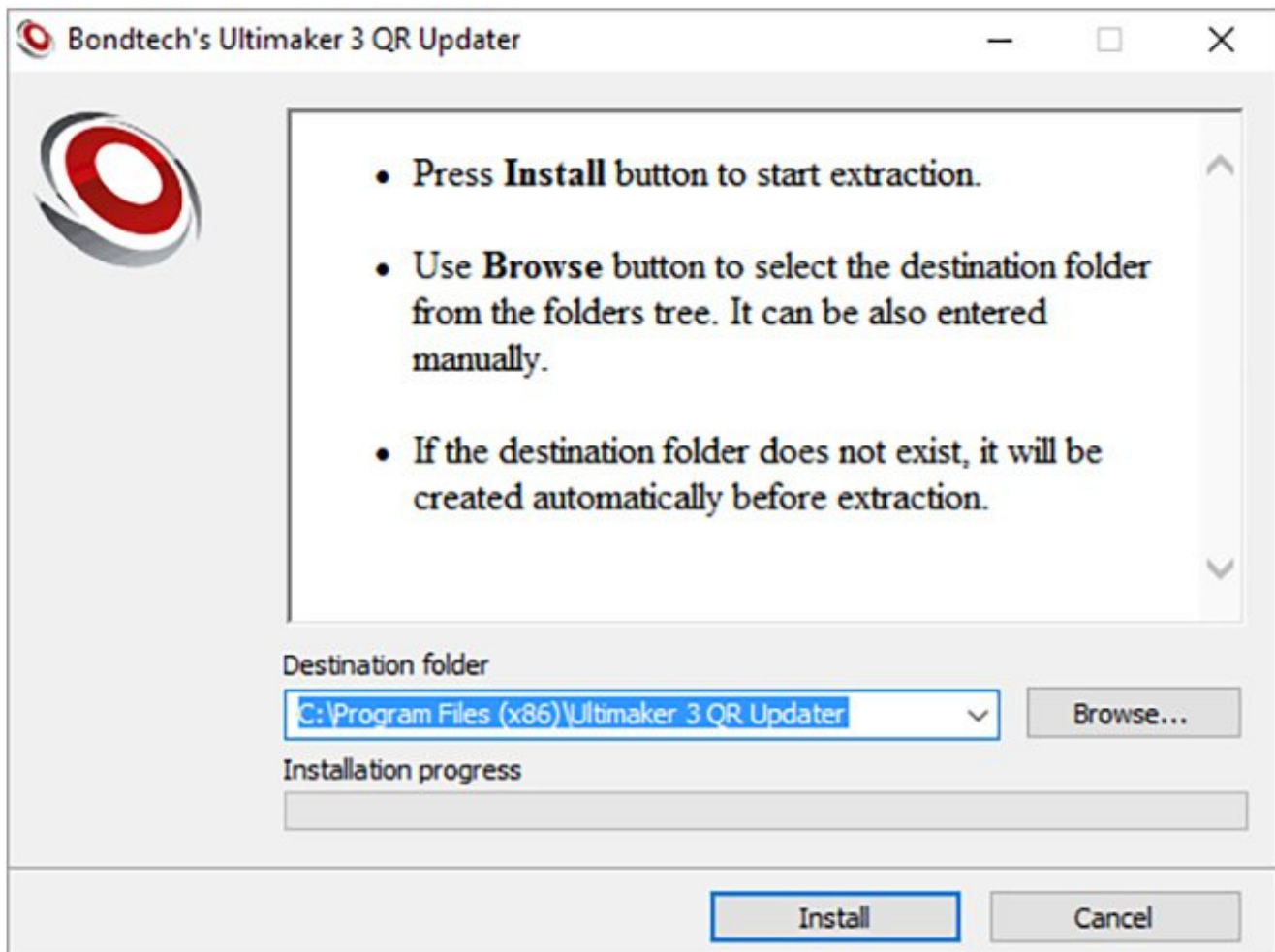




21. QR Software Configuration

In this guide we will tell you how you can update Ultimaker 3's firmware just by running our app that does the Update for you.

Written By: Nuno Santiago



INTRODUCTION

Bondtech's Product Page

This Guide relates to this QR for Ultimaker 3 Upgrade Kit:

<https://www.bondtech.se/en/product/qr-ul...>

Introduction

This guide is provided to assist you finishing installing a Bondtech upgrade that requires a firmware update of your 3D printer. The firmware update will be performed by the application this guide refers to. No more need to manually search, edit and update the firmware.

Scope of Application

Applies to the following Application:

- Ultimaker 3 QR Updater

Applies to the following Operative System:

- Windows

Applies to the following Operative System Environment:

- **JRE (Java Runtime Environment) must be installed**

Applies to the following Bondtech product:

- QR Extruder

Applies to the following 3D printers:

- Ultimaker 3; Ultimaker 3 Extended

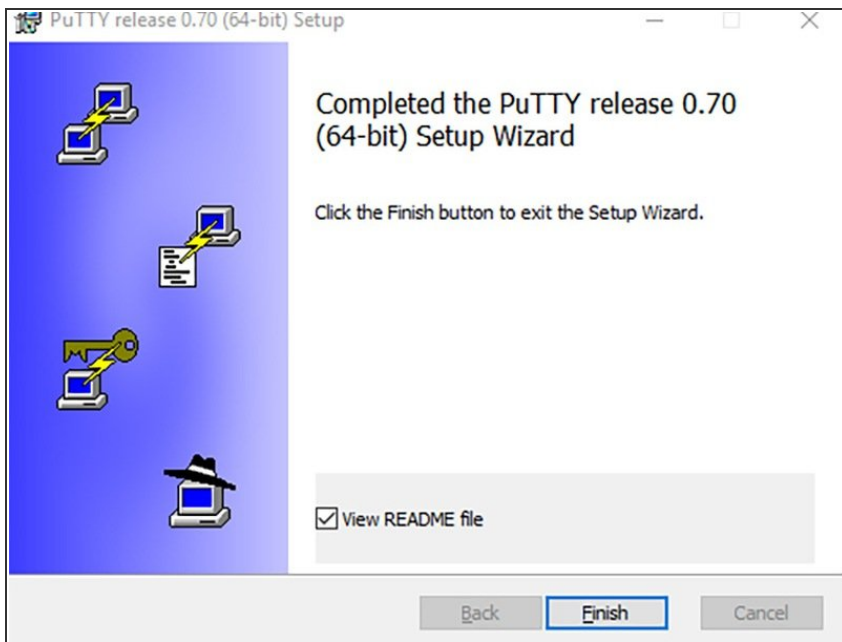
NOTE: Do not attempt to perform this procedure using this app, with any other Bondtech product; 3D printer; or Operative System.

Scope of Intervention

The following 3D printer's firmware parameters will be adjusted:

- Default Steps per mm (default_steps_per_mm, set to 492.45)
- Default Motor Current (default_motor_current, set to 1000)
- Filament Feeding Speed (___LONG_MOVE_SPEED, set to 60)

Step 1 — Is PuTTY Installed?



- Make sure you have PuTTY installed in your PC.
- If you haven't, follow our guide:
- [How to install PuTTY in Windows](#)

Step 2 — Identify The Printers IP address



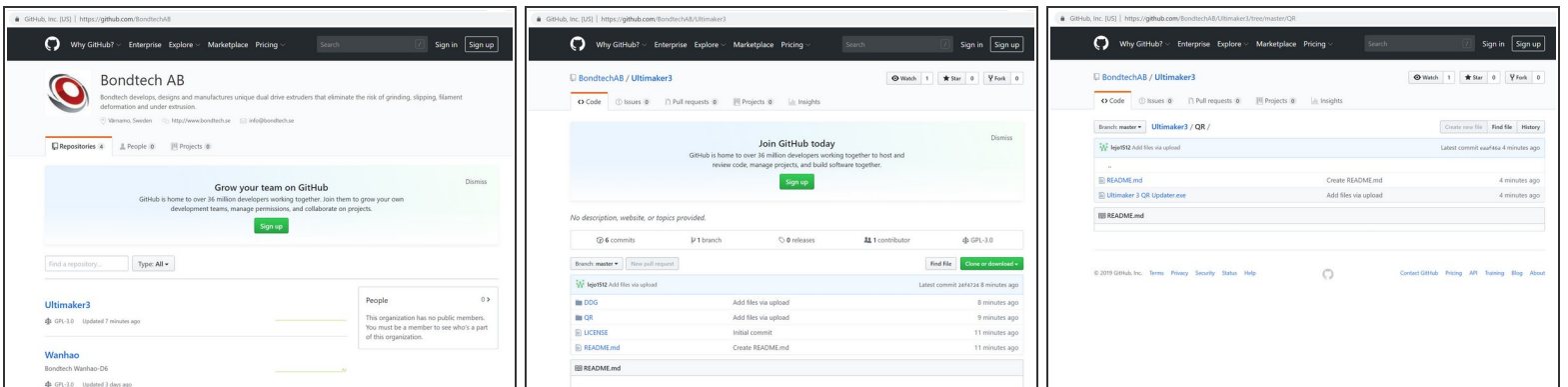
- Make sure:
 - the printer is ON
 - has finished starting up
 - is **connected to your WiFi** and on **Developer Mode**.
- Once connected the printer's display should show his IP address in the start layout of the user interface.
- ⓘ Note that your printer can show another IP. It will depend on how your LAN is setup.

Step 3 — Activate Developer Mode (optional)



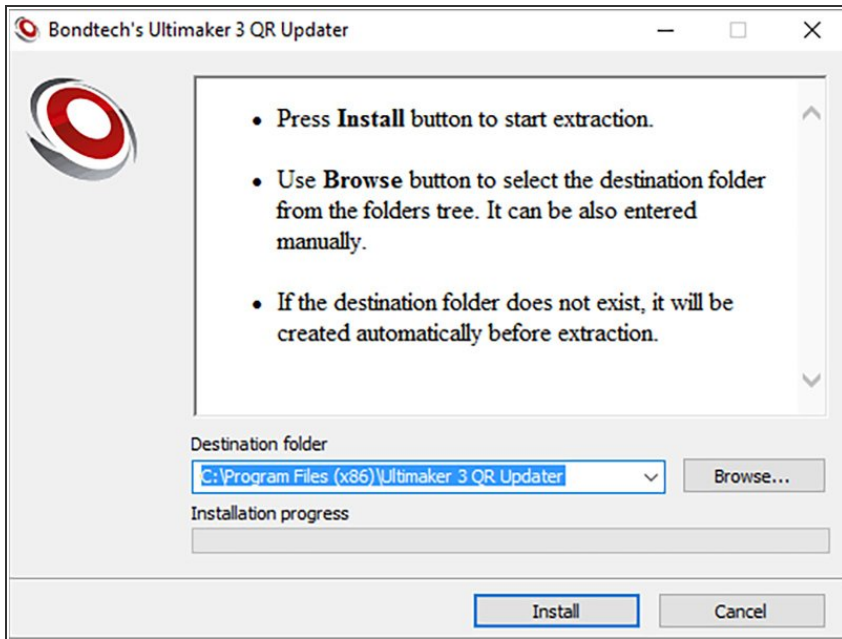
- If you are connected to your network, and there is no IP address showing in the main screen proceed this way:
 - Activate Developer mode by following these steps:
 - Navigate the menu SYSTEM>Maintenance>Diagnostics>Developer mode
 - In the next screen, select YES to enable remote login to the printer.
 - The printer will reboot and show the DEV and IP address in the top line of the main screen.

Step 4 — Download Ultimaker 3 QR Updater



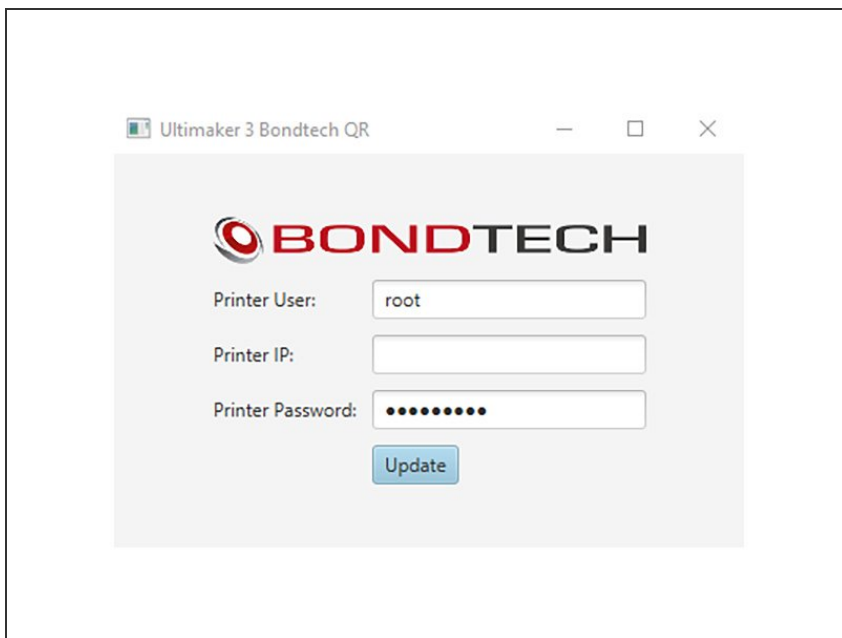
- Download our Ultimaker 3 QR Updater:
 - [Click here to download it](#)

Step 5 — Run The QR Updater



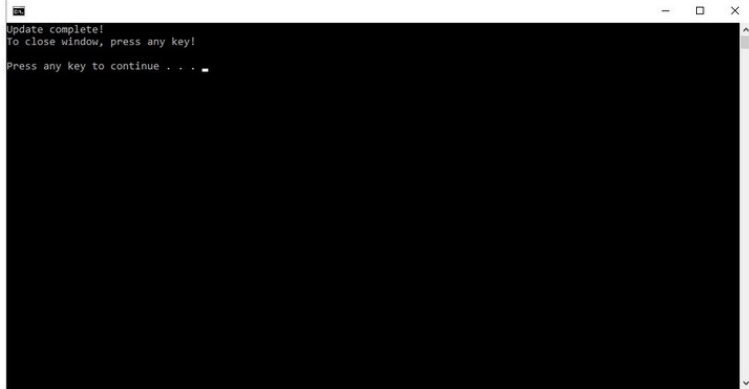
- Run the «Ultimaker 3 QR Updater» executable file.
- Allow for the application to make changes in your device when requested.
- Accept or change where the installer will place the required files.
- Click Install

Step 6 — Login And Update



- In the upcoming interface input the required data.
- Use the IP provided by the 3D printer interface.
- ⓘ For your convenience the default user and password of the Ultimaker 3 are already set.
- ⓘ If you have changed these values please replace them with the updated ones.
- Click Update.

Step 7 — Finishing Update



```
Update complete!  
To close window, press any key!  
Press any key to continue . . .
```

- A CMD window will be open during the update.
- After “Update Complete!” you can close the window.
- **You are ready to use the Bondtech QR extruders on your Ultimaker 3!!**