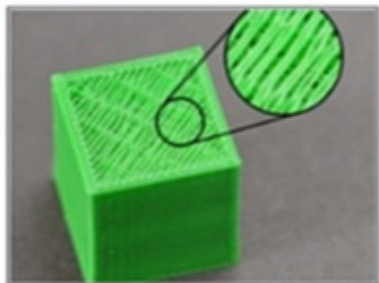




# Troubleshooting 3D Printing Issues

Common 3D Print problems and their solutions:

Written By: Jakrey Myers



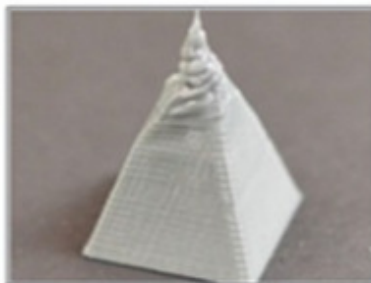
### Gaps in Top Layers

Holes or gaps in the top layers of the print



### Stringing or Oozing

Lots of strings and hairs left behind when moving between different sections of the print



### Overheating

Small features become overheated and deformed



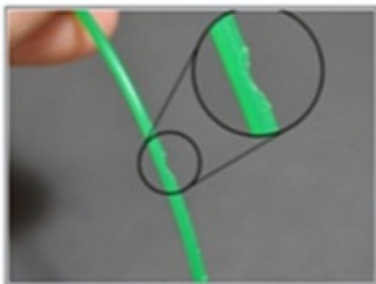
### Layer Shifting

Layers are misaligned and shift relative to one another



### Layer Separation and Splitting

Layers are separating and splitting apart while printing



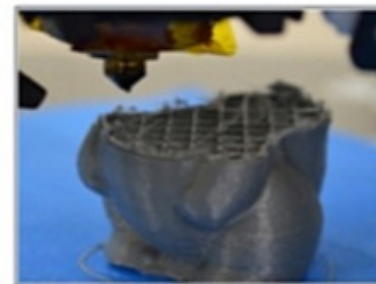
### Grinding Filament

Plastic is being ground away until the filament no longer moves, otherwise known as "stripped" filament



### Clogged Extruder

Extruder is clogged or jammed and will no longer extrude plastic from the nozzle tip



### Stops Extruding Mid Print

Printer stops extruding plastic randomly in the middle of a print

## INTRODUCTION

- [Reprap Print Troubleshooting Guide](#)
- [Getting Better Prints Guide](#)
- [Print Quality Troubleshooting](#)

Common 3D printing issues discussed in these guides are:

- Extruding temperature too cold
- Extruding temperature too hot
- Printer speed greater than extrusion rate
- Print speed less than extrusion rate
- Warping
- Bed adherence issues
- Ovality and calibration
- Material feed fault
- Motor skipping steps
- Printing defects

This document was last generated on 2017-11-29 05:40:02 AM.