



# 7-LED Rotating Beacon

This guide describes how to use and configure the 7-LED Rotating Beacon kit from Brickstuff.

Written By: Rob K



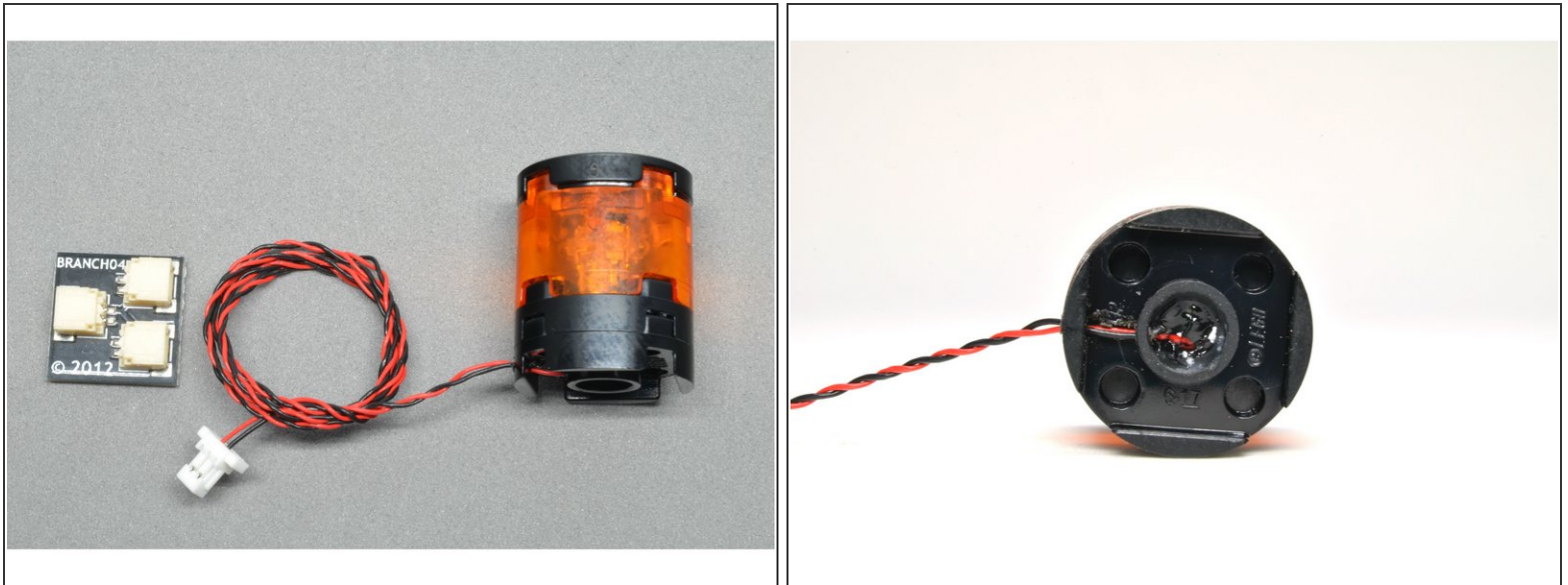
**TOOLS:**

- Paperclip (1)

**PARTS:**

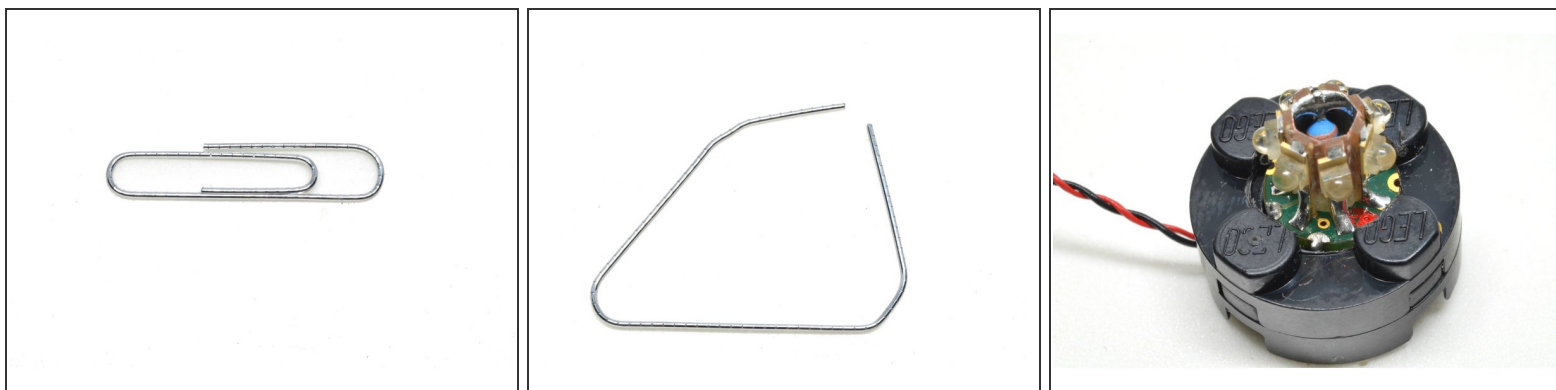
- Brickstuff 7-LED Rotating Beacon Kit (1)
- One of Brickstuff's Power Sources (1)

## Step 1 — The Beacon Kit



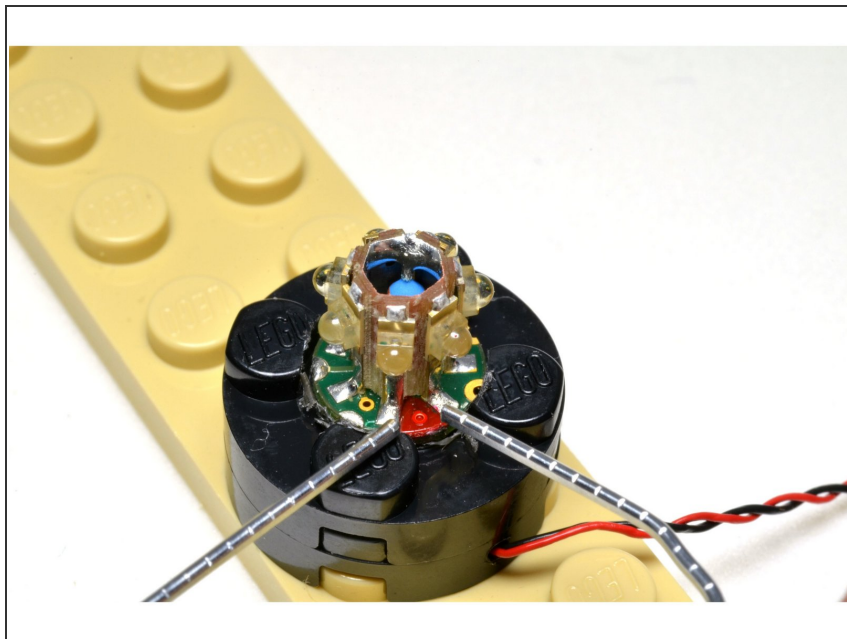
- The Brickstuff rotating beacon kit includes one beacon assembly containing seven LEDs, mounted in the space of a 2x2 LEGO brick.
- The beacon kit also includes a 1:2 BRANCH04 adapter, for connecting the beacon to a power source.
- The translucent top of the beacon is removable, to allow adjustment of the effect modes. The beacon has 13 effects pre-programmed.
- The active effect selection is maintained even when power is off.

## Step 2 — Changing the Effect Mode



- The beacon includes 13 lighting effect modes.
- To change the active mode, you can use a paperclip, unfolded.
- Carefully remove the translucent top of the beacon so the LED lighting assembly is visible.
- One side of the beacon will have a red dot between two metal contacts. Use the paperclip to connect or jump these two contacts-- when a positive connection is made, the lighting mode will advance.
- **When the two contacts are connected by the paperclip (when there is a positive connection), the beacon will "freeze" and only one of the seven LEDs will remain lit. This is how you can tell you've made a solid connection to change the effect mode.**

### Step 3 — Changing the Effect Mode (continued)



- This photo shows a detail view of using the unfolded paperclip to jump the two metal contacts on either side of the red dot.
- ***'When the two contacts are connected by the paperclip (when there is a positive connection), the beacon will "freeze" and only one of the seven LEDs will remain lit. This is how you can tell you've made a solid connection to change the effect mode.'***
- To continue cycling through effect modes, touch the paperclip to the two metal contacts multiple times.
- The effect mode will automatically cycle back to #1 after passing #13.
- The active effect mode is preserved even when power is disconnected.

## Step 4 — Beacon Effect Mode 1



- This video demonstrates beacon effect #1.

## Step 5 — Beacon Effect Mode 2



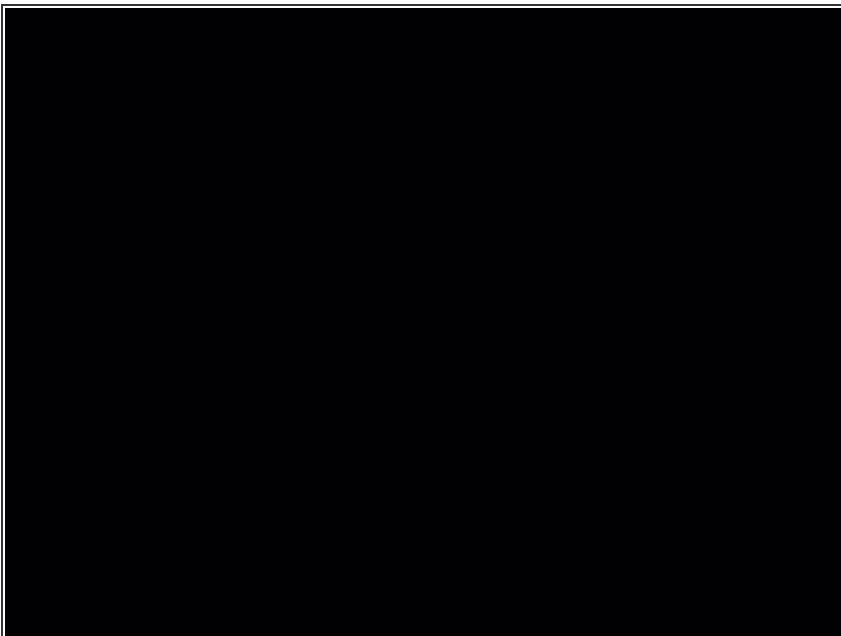
- This video demonstrates beacon effect #2.

## Step 6 — Beacon Effect Mode 3



- This video demonstrates beacon effect #3.

## Step 7 — Beacon Effect Mode 4



- This video demonstrates beacon effect #4.

## Step 8 — Beacon Effect Mode 5



- This video demonstrates beacon effect #5.

## Step 9 — Beacon Effect Mode 6



- This video demonstrates beacon effect #6.



## Step 10 — Beacon Effect Mode 7



- This video demonstrates beacon effect #7.

## Step 11 — Beacon Effect Mode 8



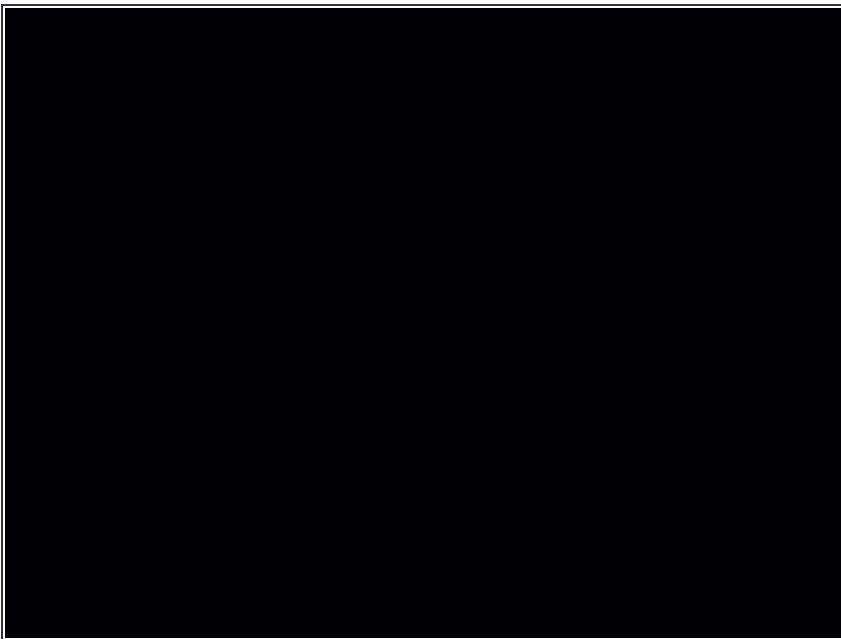
- This video demonstrates beacon effect #8.

## Step 12 — Beacon Effect Mode 9



- This video demonstrates beacon effect #9.

## Step 13 — Beacon Effect Mode 10



- This video demonstrates beacon effect #10.

## Step 14 — Beacon Effect Mode 11



- This video demonstrates beacon effect #11.

## Step 15 — Beacon Effect Mode 12



- This video demonstrates beacon effect #12.

## Step 16 — Beacon Effect Mode 13



- This video demonstrates beacon effect #13.