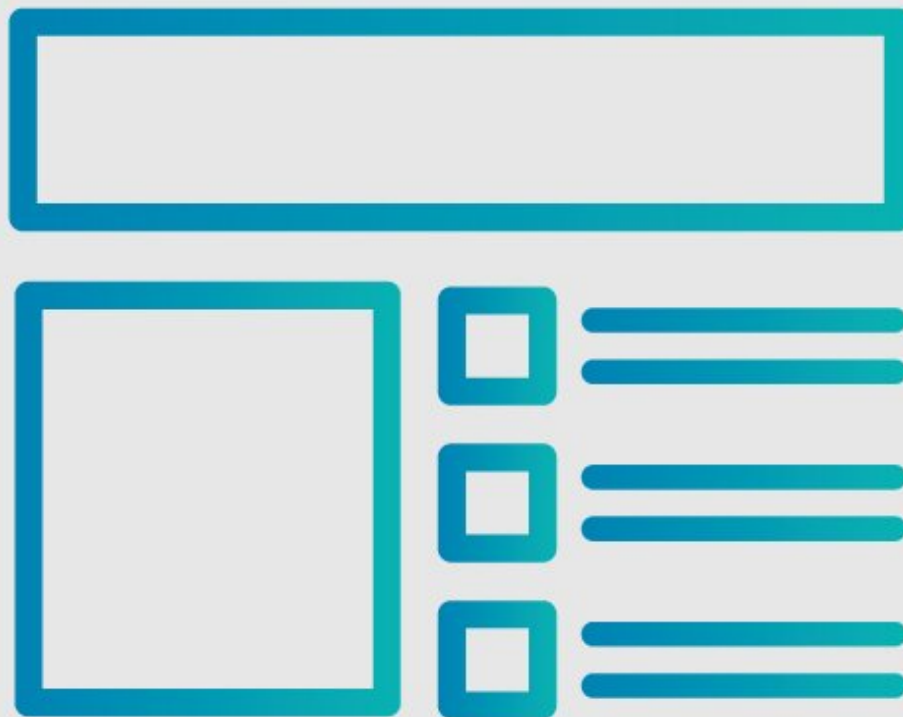




How to Format and Use Bullet Points

This guide demonstrates how to format and use bullet points in your guide.

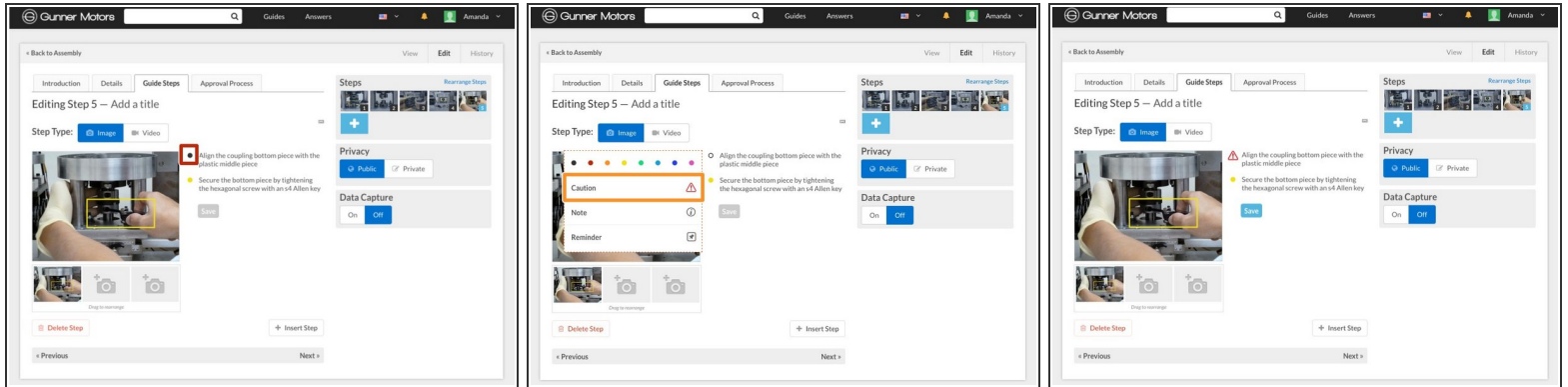
Written By: Dozuki System



INTRODUCTION

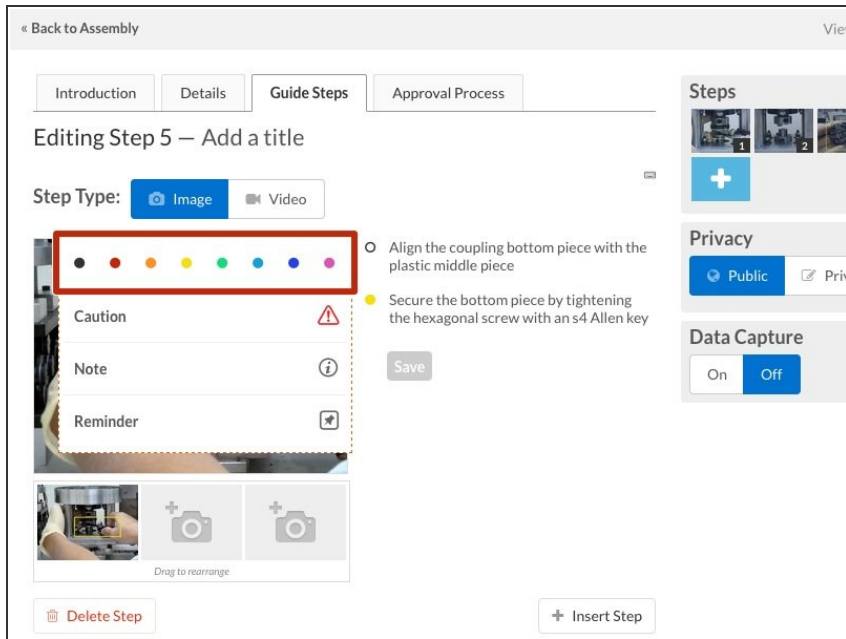
This guide demonstrates how to format and use bullet points in your guide.

Step 1 — How to Format and Use Bullet Points




- Navigate to the step that you would like to format bullet points on.
- Press the bullet point and a box of options will appear.
- Click the bullet that you want to display.


Step 2 — Meanings of Each Bullet Point




- There are four types of bullet points:

- **Colors:** These are colored bullets that correspond with the markers in the Media Manager. Use these bullets to help indicate location of something within your picture.

 **Caution:** This bullet type is used to indicate when something is particularly important or dangerous. These bullets help users take heed when dealing with that step.

 **Reminder:** This bullet type serves to remind workers of something in the process that they might otherwise forget.

 **Note:** This bullet point is used to indicate something that the user should take note of.

Step 3 — Customize Bullet Points on Your Dozuki Site

fa-send-o (alias)	fa-share	fa-share-alt
fa-share-square	fa-share-square-o	fa-shield
fa-sign-in	fa-sign-out	fa-signal
fa-sliders	fa-smile-o	fa-sort
fa-sort-alpha-desc	fa-sort-amount-asc	fa-sort-amount-desc
fa-sort-desc	fa-sort-down (alias)	fa-sort-numeric-asc
fa-sort-up (alias)	fa-space-shuttle	fa-spinner
fa-square	fa-square-o	fa-star
fa-star-half-empty (alias)	fa-star-half-full (alias)	fa-star-half-o
fa-suitcase	fa-sun-o	fa-support (alias)
fa-tachometer	fa-tag	fa-tags
fa-taxi	fa-terminal	fa-thumb-tack
fa-thumbs-o-down	fa-thumbs-o-up	fa-thumbs-up
fa-times	fa-times-circle	fa-times-circle-o
fa-toggle-down (alias)	fa-toggle-left (alias)	fa-toggle-right (alias)
fa-trash-o	fa-tree	fa-trophy
fa-umbrella	fa-university	fa-unlock
fa-undo	fa-upload	fa-user
fa-undo	fa-volume-down	fa-volume-off
fa-undo	fa-wheelchair	fa-wrench

- Bullets in Dozuki are customizable on your site using [Font Awesome Icons](#).
- To review how to customize your bullet icons, see the [Custom CSS Help Page](#).