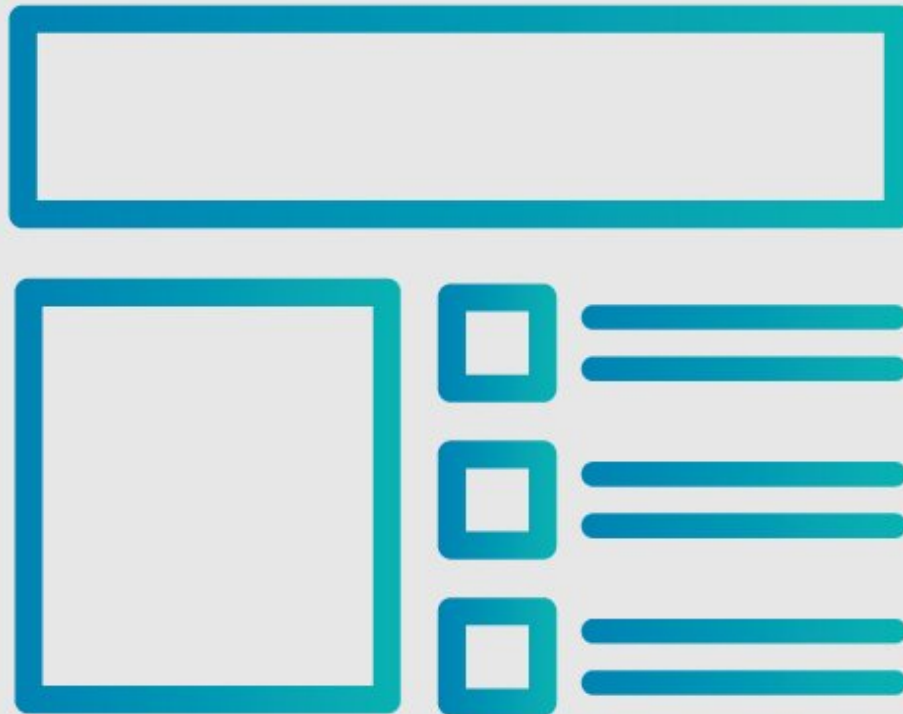




# How to Add Parts and Tools

This guide demonstrates how to add parts and tools your guide page.

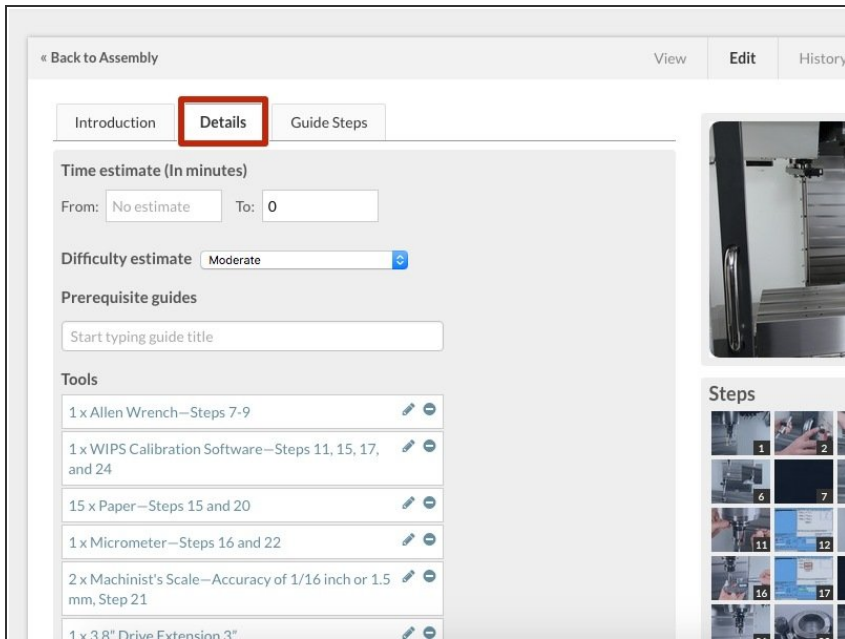
Written By: Dozuki System



## **INTRODUCTION**

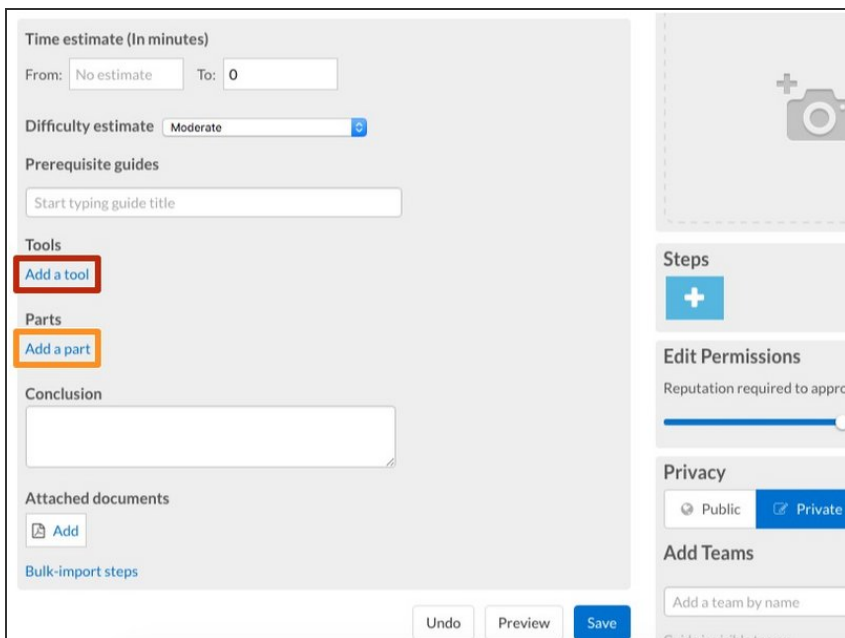
This guide demonstrates how to add parts and tools your guide page.

## Step 1 — How to Add Parts and Tools



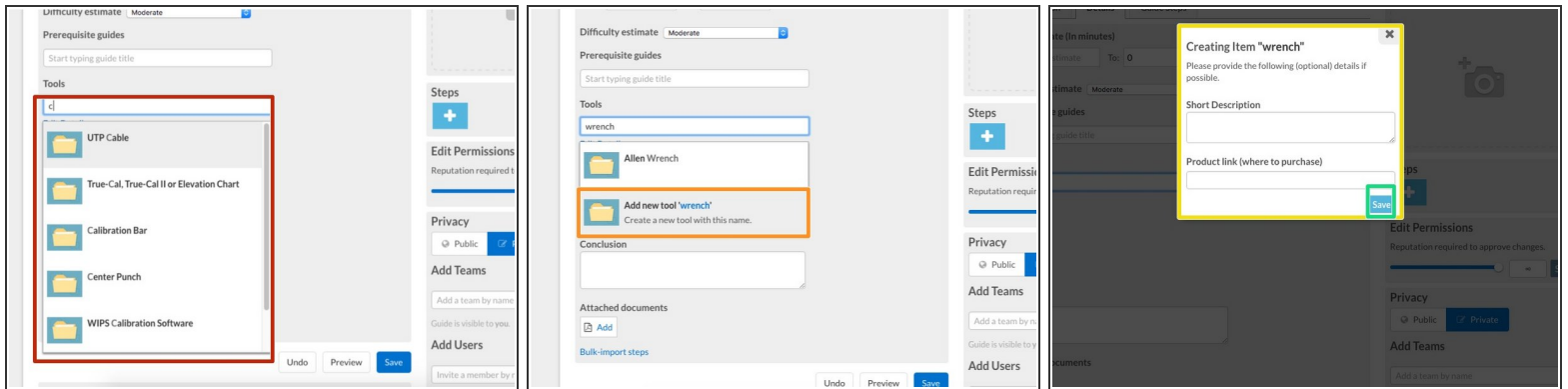
- Go to the **Details** tab of the guide you want to add parts and tools to.

## Step 2



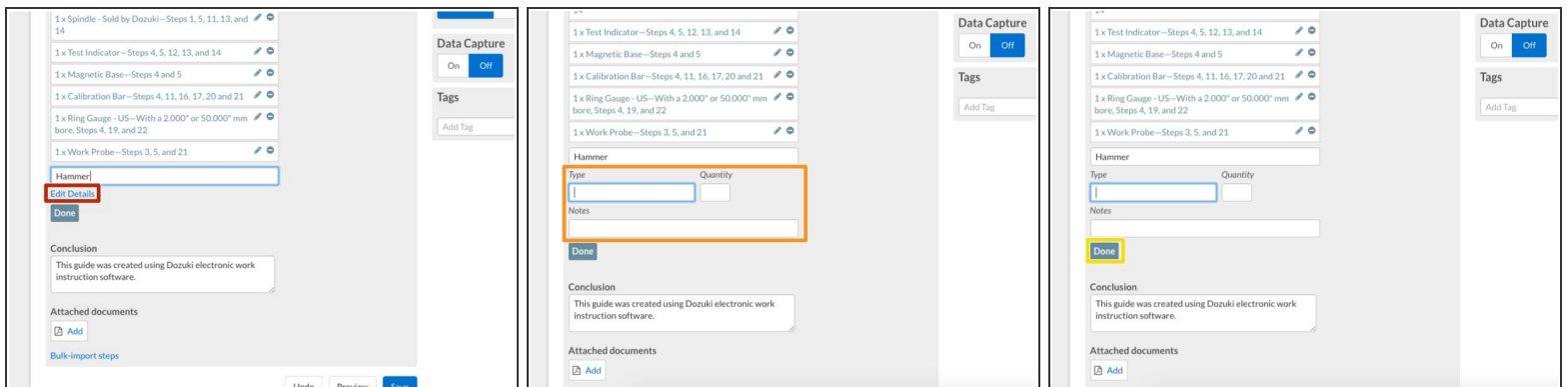
- Click **Add a Tool** to add tools to the guide.
- Click **Add a Part** to add parts to the guide.

## Step 3



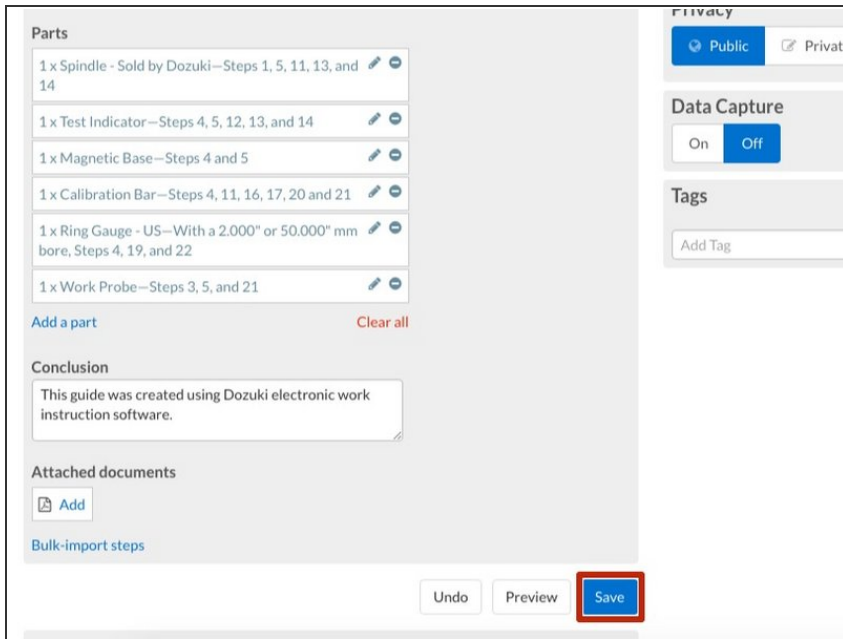
- Begin typing in the name of the part or tool you are adding.
- If the part already exists on your site, it will appear in a drop-down. Select this part by clicking on it in the drop-down and then pressing **Done**.
- If your part does not exist in the system, create it in the system by typing in its name and pressing **Add new tool**.
  - Enter in a brief summary, an optional product link, then click **Done**.
- Click **Save**.

## Step 4



- If you would like to add additional details about the part or tool, click **Edit Details**.
- Here you can add in the **Type**, **Quantity** and any additional **Notes** about the part or tool.
- When you're finished, click **Done**

## Step 5



The screenshot shows the 'Parts' section with a list of items:

- 1 x Spindle - Sold by Dozuki—Steps 1, 5, 11, 13, and 14
- 1 x Test Indicator—Steps 4, 5, 12, 13, and 14
- 1 x Magnetic Base—Steps 4 and 5
- 1 x Calibration Bar—Steps 4, 11, 16, 17, 20 and 21
- 1 x Ring Gauge - US—With a 2.000" or 50.000" mm bore, Steps 4, 19, and 22
- 1 x Work Probe—Steps 3, 5, and 21

Below the list are 'Add a part' and 'Clear all' buttons. The 'Conclusion' section contains the text: 'This guide was created using Dozuki electronic work instruction software.' The 'Attached documents' section has an 'Add' button. At the bottom, there are 'Undo', 'Preview', and 'Save' buttons, with the 'Save' button highlighted by a red box.

- After you have added all required parts and tools, press **Save**.

To reassemble your device, follow these instructions in reverse order.