

DOZUKI

# How to Install an Update

How to Install an Update of Dozuki OnPrem

Written By: Dozuki System



DOZUKI

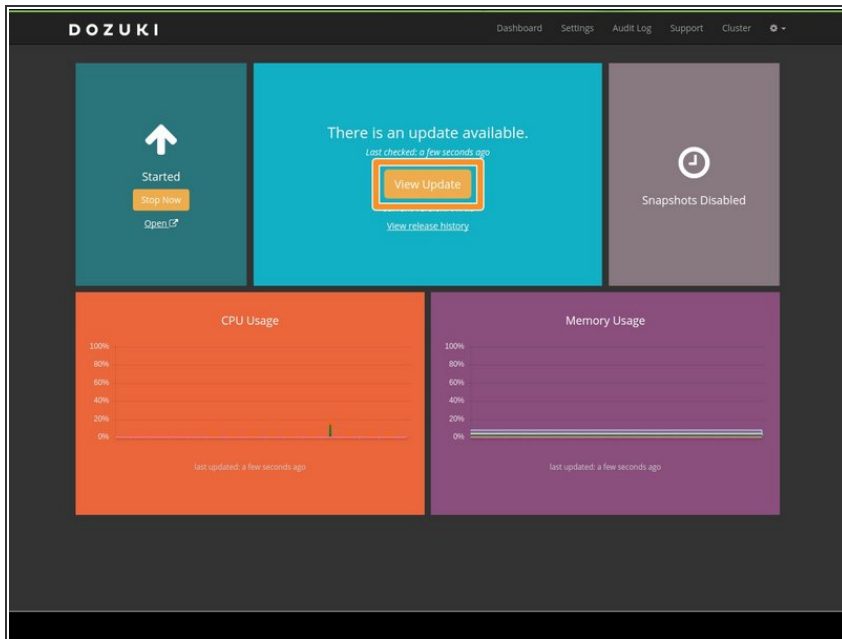
## INTRODUCTION

This guide demonstrates how to install an update for Dozuki OnPrem.

## REQUIREMENTS:

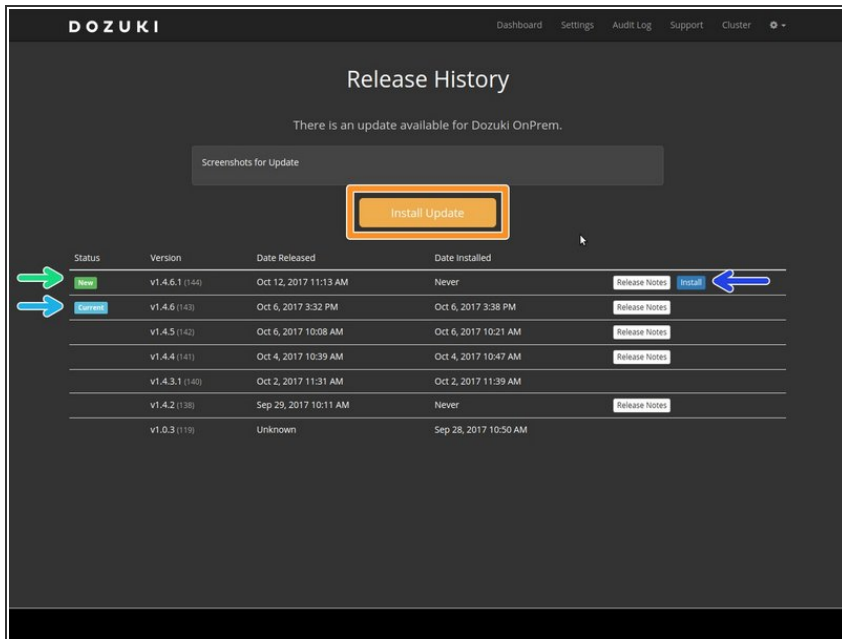
1. **Always [Sync your License File](#) before performing an update.**
2. **ALWAYS PERFORM A FULL POINT-IN-TIME BACKUP OF YOUR CONTENT VOLUME.**
  - **If you do not have a block level point-in-time backup solution, you should fully power down your VM before performing the backup in order to avoid corruption. You may need to schedule downtime for this.**
  - Note: If you are using **Veeam** software, you will need to **STOP** your application before taking backups. You will need to do a "full" restore, which is *not the default* for the Veeam software.

## Step 1 — Open OnPrem Console



- Open your **Dozuki OnPrem Console**.
- If an update is available, you can click the orange **View Update** button in the top center of the page.

## Step 2 — Install the Update



**i** The **Release History** page displays all previous versions of the OnPrem platform as well as new version updates.

- Click the orange **Install Update** button when you are ready to begin the installation of the most recent new version available for update.
- Review the **version history** at the bottom of the page.
  - Any **new versions available** are highlighted in green.
  - Your **current version** is highlighted in light blue.
  - You can also select to **install a specific new version** (even if it is not the most recent) by clicking the dark blue Install button on the same row of that version.

If you experience any issues or problems, please contact Dozuki Priority Support:

[priority.support@dozuki.com](mailto:priority.support@dozuki.com)