



Upload File or Folder

Upload a file or folder from Farmobile DataEngineSM platform to your Farmobile PUCTM device.

Written By: Support

A screenshot of the Farmobile DataEngine web interface. The left sidebar contains navigation options: Machines, Fields, Notes, File Transfer (highlighted in blue), Reports, Downloads, Inputs, Account, and Farmobile Shop. The main content area shows a device named "File Transfer Demo PUC" with details: Farmobile Support, Firmware 4.170000, and MAC 0023A7CEDC68. It indicates the device was last seen 35s ago and contains 14 files, 10 folders, and 1 pending item. The "FILE TRANSFER" section includes "Upload" and "New Folder" buttons. Below, a file list shows folders "Rx" and "viper", and a file "Farmobile Harvest Data Out.imt" (3 kb, Oct 13, 2017 4:13 pm).

File Transfer Demo PUC
Farmobile Support
Firmware 4.170000
MAC 0023A7CEDC68

Last seen **35s ago**
14 files
10 folders
1 pending item

FILE TRANSFER [Upload] [New Folder]

Home

Select All

Rx

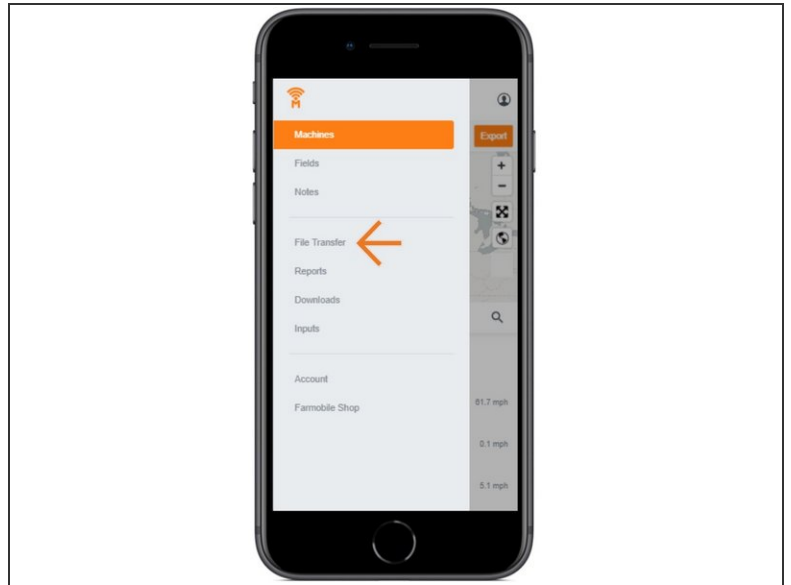
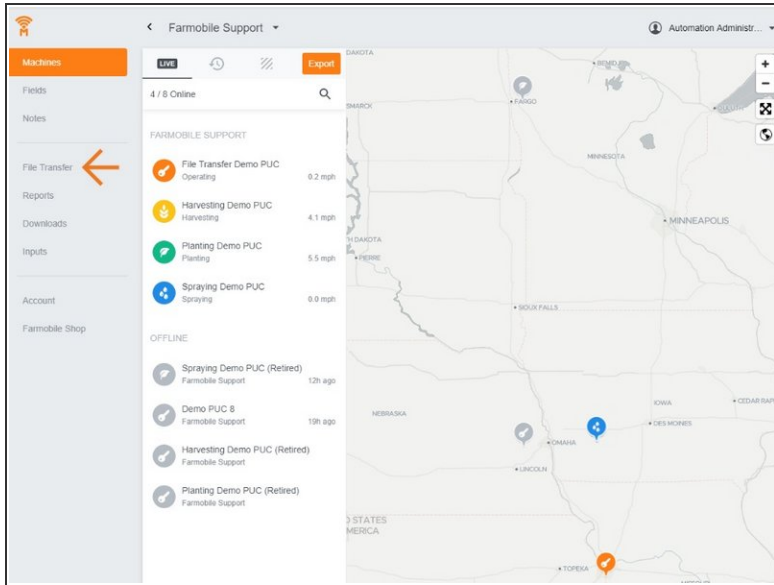
viper

Farmobile Harvest Data Out.imt 3 kb Oct 13, 2017 4:13 pm

INTRODUCTION

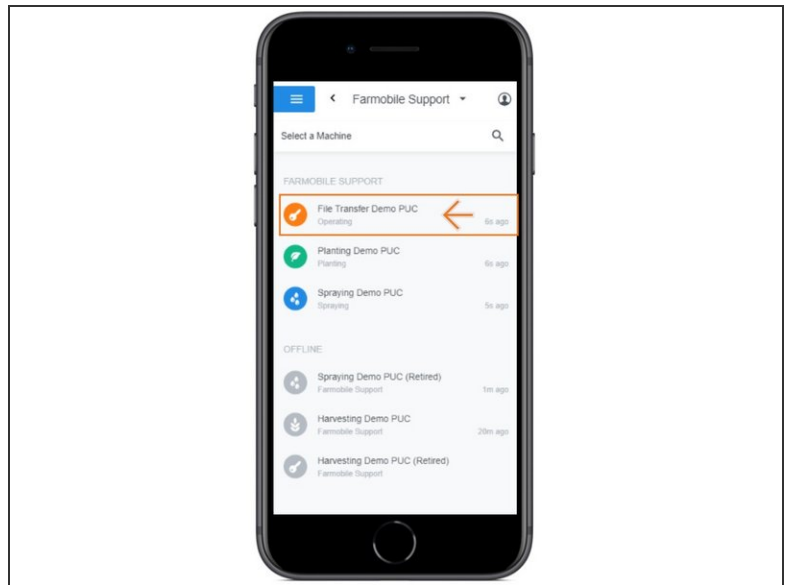
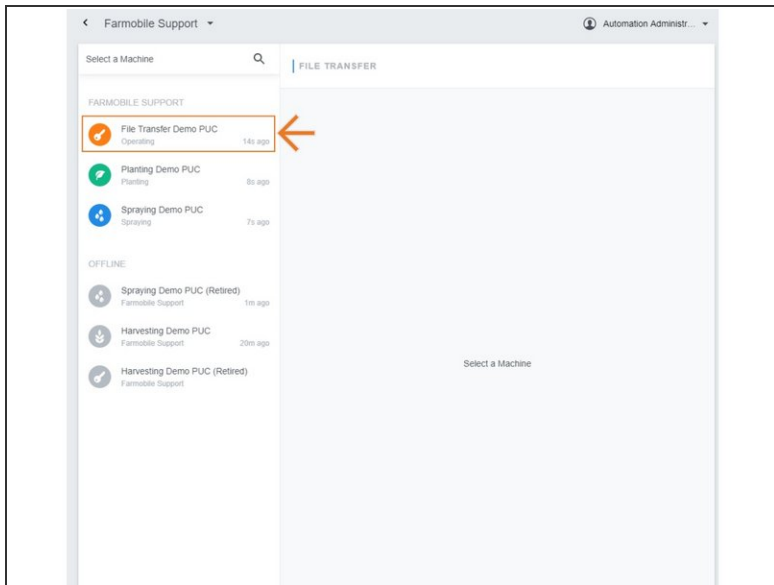
- Ability to Upload files or folders to Farmobile PUC devices.
- Upload works for both online and offline Farmobile PUC device
 - Files sync in real time with all online devices.
 - Files sync in real time with offline devices once they become active. While offline, any files or folders uploaded will be staged and set to pending status until the Farmobile PUC device comes online.

Step 1 — Select File Transfer from the Farmobile DataEngineSM Platform



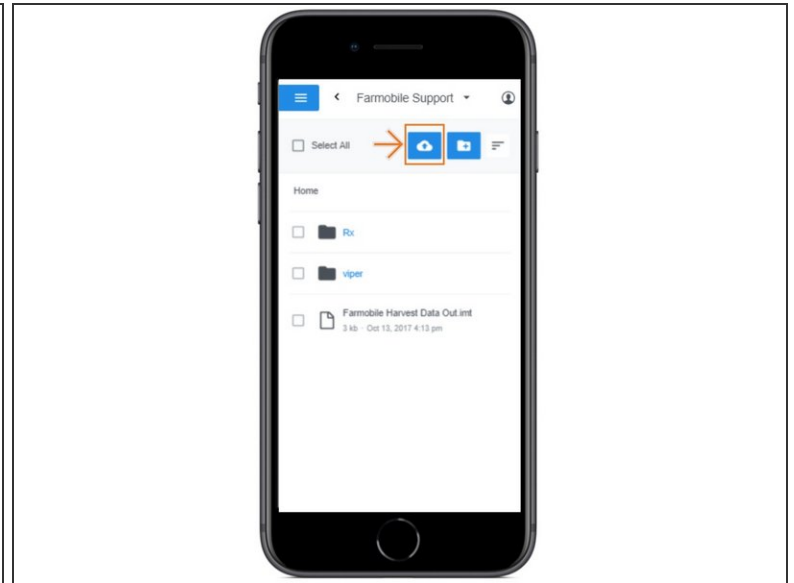
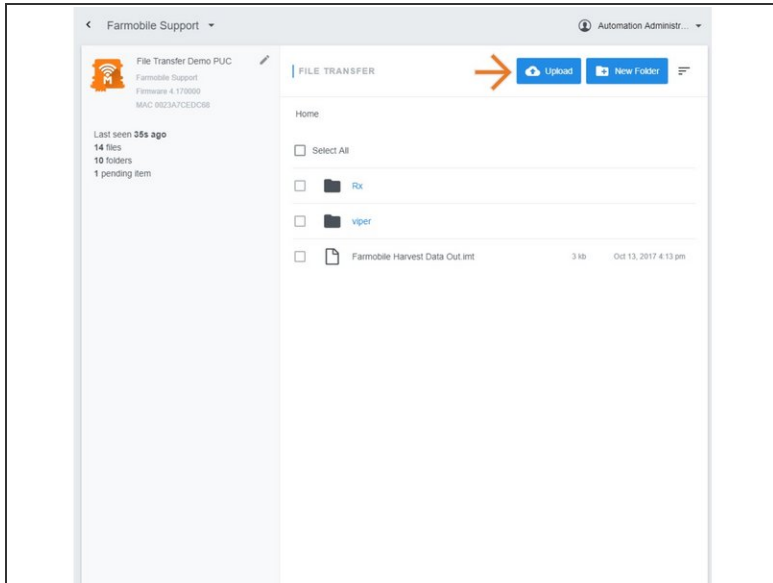
- Selecting File Transfer from the Farmobile DataEngine platform menu will open the File Transfer page with all of your Farmobile PUC devices listed.

Step 2 — Select a Farmobile PUC Devices



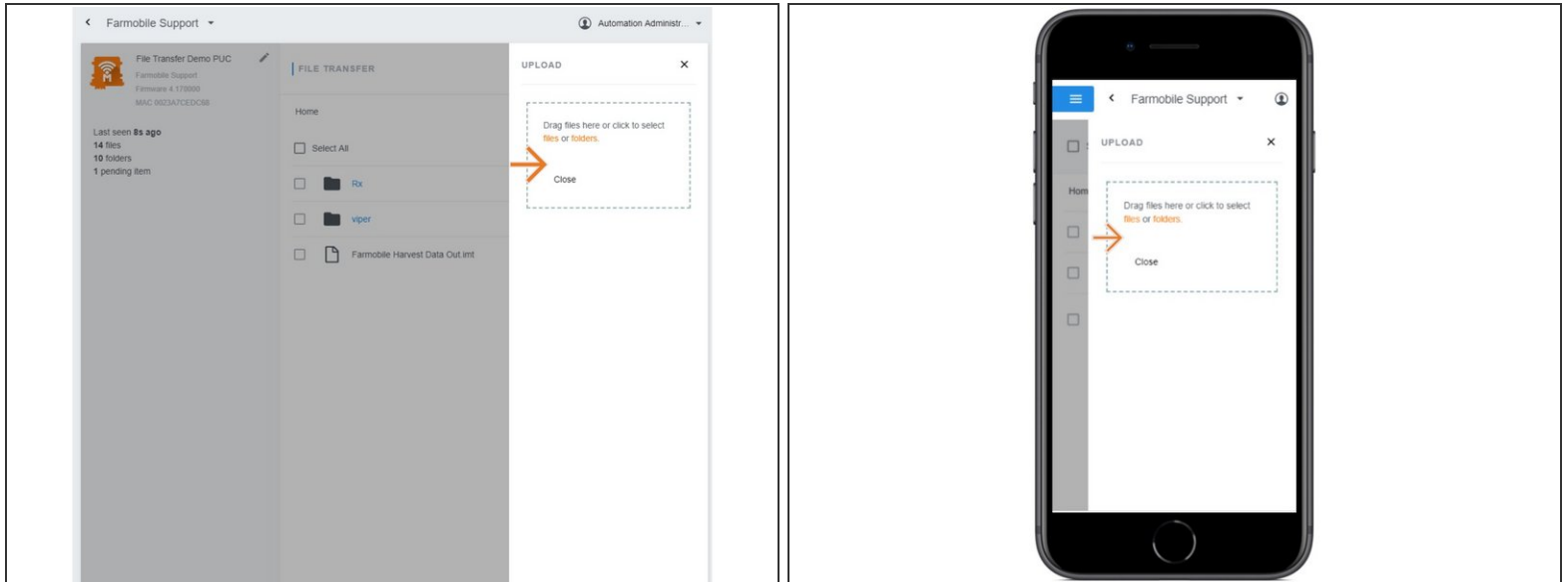
- From the list of Farmobile PUC devices, select the required device to upload a file or folder to.

Step 3 — Select Upload



- Select 'Upload' to open the upload window.

Step 4 — Upload File or Folder



- Within the upload window, you can drag and drop files and folders or navigate to the file or folder location to upload.
- The File or Folder will be added to the list associated to the Farmobile PUC device.
- A status label is included tracking the file or folder progress.