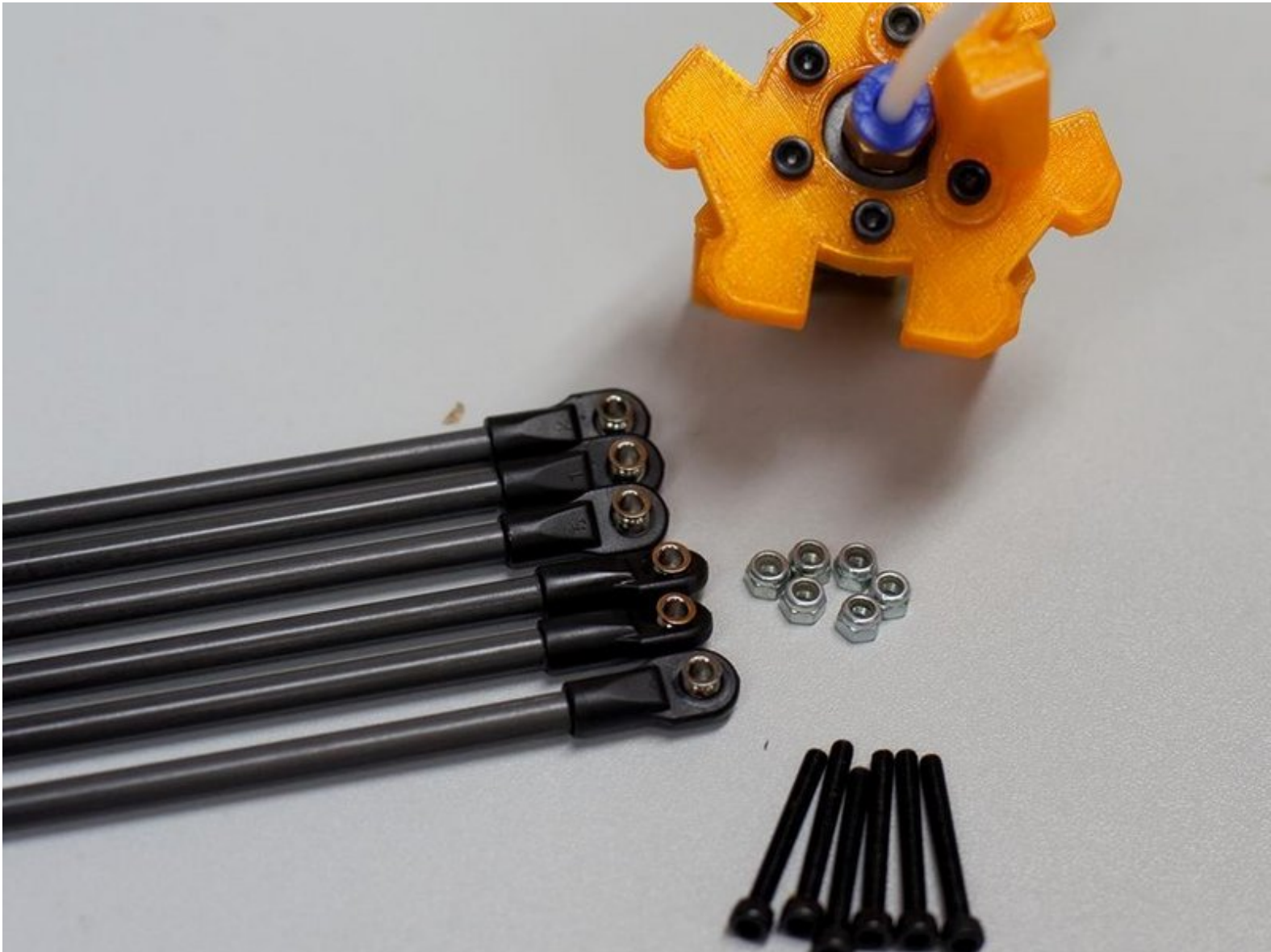


HKBay.com

# I - Spider Assembly

Written By: HKBay



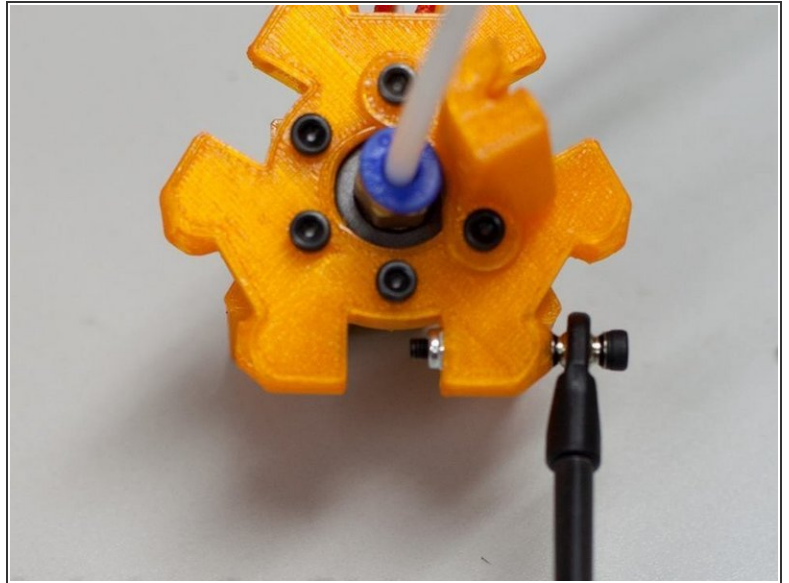
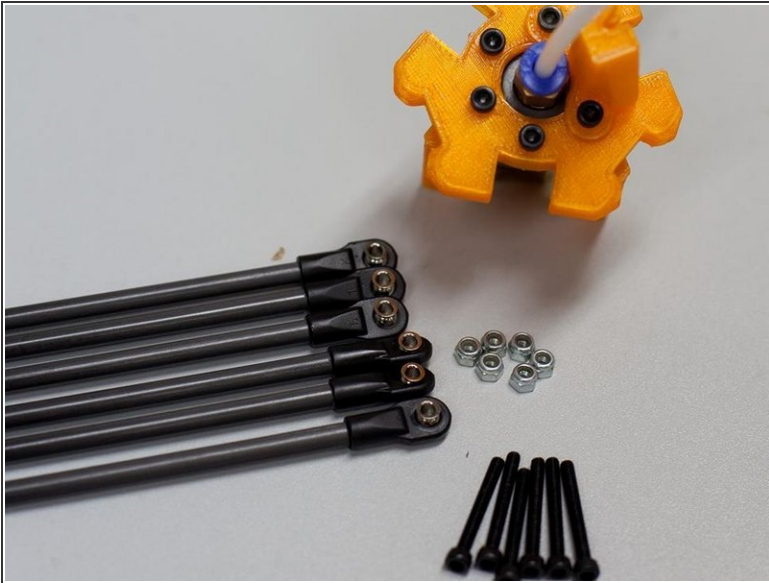
 **TOOLS:**

- Hex key; ball ended, long arm, 2.5mm (1)

 **PARTS:**

- effector plate (1)
- carbon diagonal arms with Traxxas rod ends (6)
- M3x25 screws (6)
- M3 nyloc nuts (6)
- carriages (3)
- M3x20 screws (6)
- M3x16 screws (6)
- M3x8 screws (6)

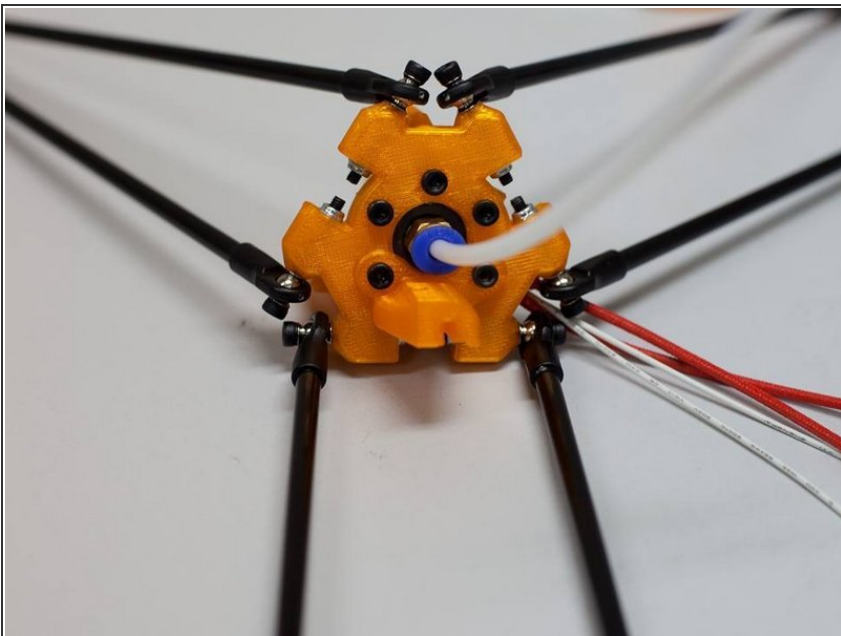
## Step 1 — Effector and Arms



- Fit one end of the first arm onto an M3x25 screw and fit it to one of the conical ends on the effector plate by using one of the nyloc nuts.

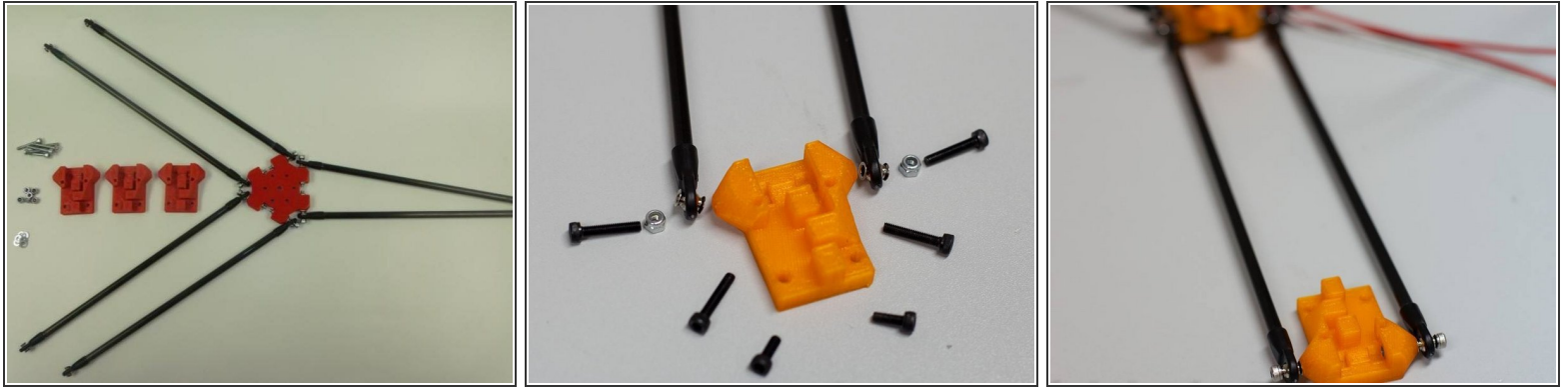
**i** Tighten firmly.

## Step 2



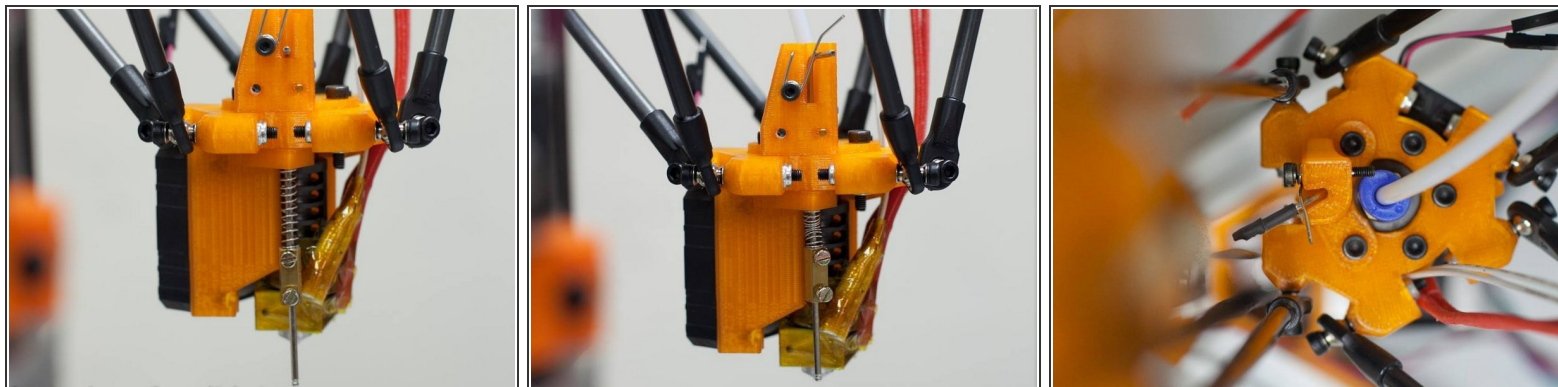
- i** There is not enough clearance for the adjacent arm - it will not go past the fitted one; therefore hold it against the conical end, and then insert the M3x25 screw.
- ★** Repeat for all the other rods until effector and all carbon fiber arms are fully assembled.

### Step 3 — Add carriages to spider



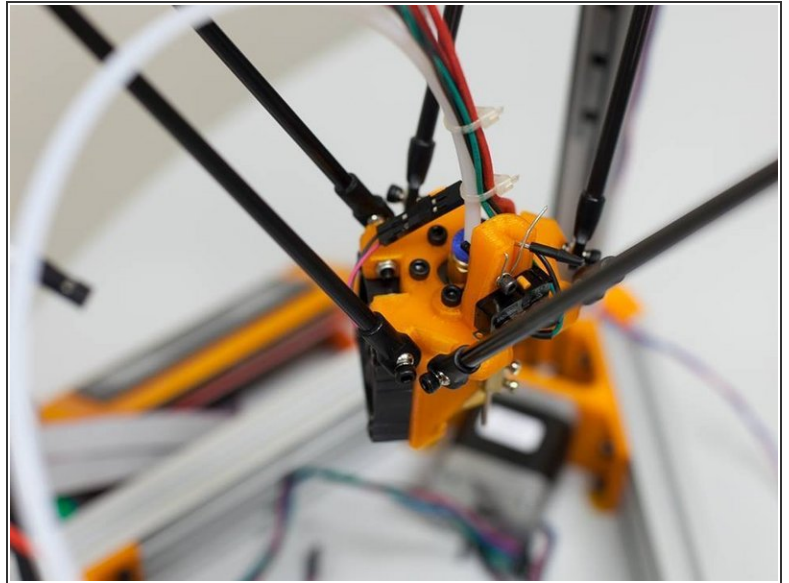
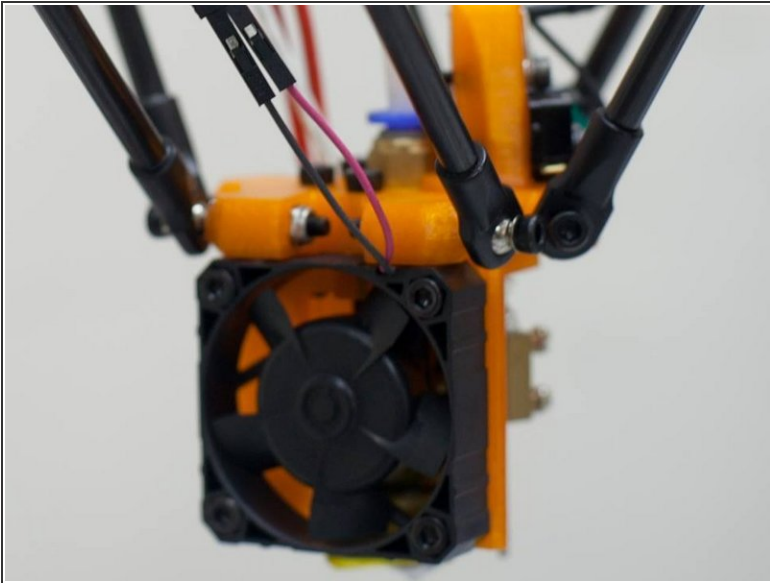
- Lay the effector and arms out as shown.
- ⚠ The carriages need to be fitted facing upwards and towards the effector plate (see last picture below).
- Fit a nyloc nut into a nut trap, insert an M3x20 screw and tighten firmly.
- ☑ Repeat for all 3 carriages to complete the spider.

## Step 4 — Add Z-Probe



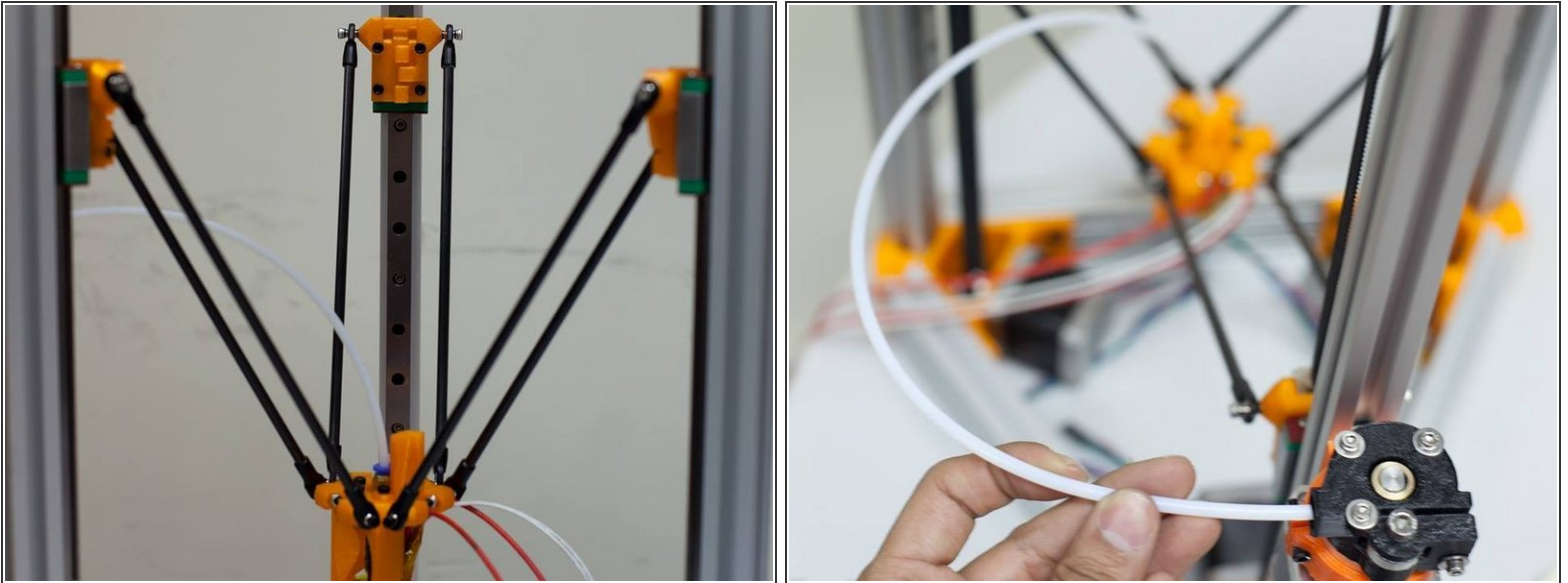
- Drop the long leg of the Z-probe down the remaining hole in the probe-holder. It should pass through the unused bolt-hole in the effector and just fit past the hot-end.
- ⓘ If necessary, turn the hot-end so that the probe can pass easily and without obstruction and without hot-end touching plastic! Also make sure the cables do not obstruct the Z-Probe. Tighten all screws evenly, but do not over-tighten them or you will strip the tapped threads in the plastic!
- With the probe in the retracted (up) position, fit the pen spring and screw terminal from below, compress the spring about 2/3 and tighten the screw-terminal.
- ⓘ Trigger the probe by flicking the short leg past the safety-pin spring into the deployed position and confirm it is pushed down hard enough by the springs to activate the micro-switch - you should hear it click.
- ⓘ Push the probe leg back up past the safety-pin spring and check that it retracts correctly.



**Step 5**

- i** Repeat several times to confirm that the probe will work reliably. You may need to grease the brass rod.

## Step 6 — Fit spider to the ball-bearing slides



- Attach the spider to the sliding rails with each two M3x16 on top and two M3x8 screws on bottom.

⚠ Carriages must face downwards (see picture).

⚠ Adjust the spider in such a way that the fan points forward towards X and the Z-Probe towards Z tower!

- Fit the PTFE tube into the extractor and tighten the brass connector.

⚠ Make sure the brass connector goes in at a right angle. Use 10mm Allen Key, but don't over-tighten!

ⓘ Oil the rails with high-quality oil.