



# Hybrid Racing Maxim Shift Boot Collar

Written By: David Cordell



## INTRODUCTION

Important!! Please read the entire install guide twice before starting your installation. No really, it's a good idea to read it twice before you begin so everything goes smooth.

## Step 1 — Parts of the shift boot collar



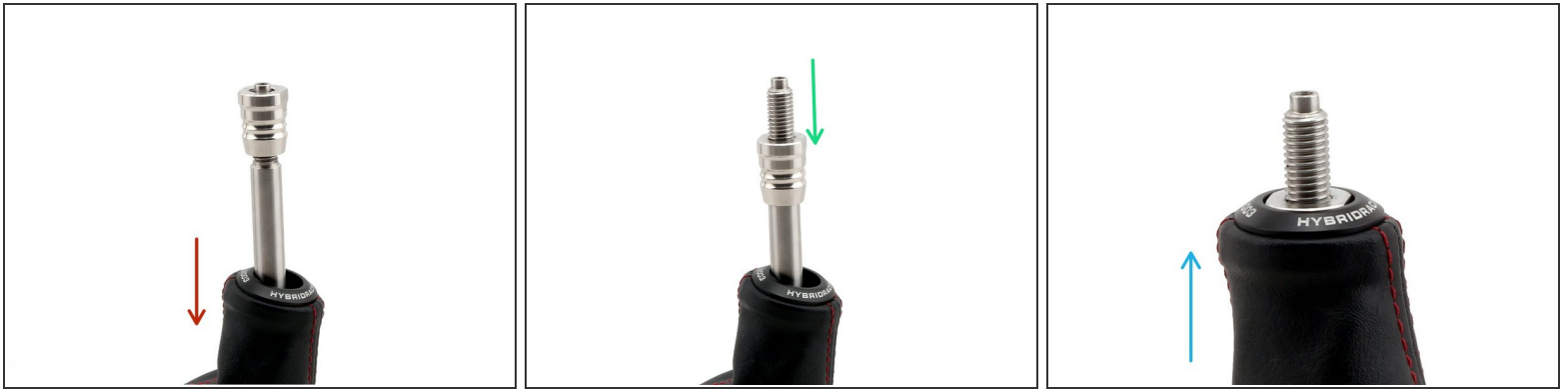
- The Hybrid Racing Maxim Shift Boot Collar comes pre-assembled and contains 3 parts.
- The outer collar is made from anodized aluminum.
- The inner sleeve is machined from stainless steel.
- The elastic rubber retaining band holds the collar to your shift boot.

## Step 2 — Installing the boot collar



- Since this is a universal part, you will need to remove the shift boot from your console and remove the stock collar.
- Fold the shift boot inside out and slide the collar all the way in until it comes out the other end.
- Once you have the sleeve in place, stretch the elastic band around the fabric, securing it to the boot.
- ⓘ You should use the elastic band included with the collar kit. Some factory cars use thin zip-ties to secure the fabric but these are bulky and can wear the outside of the boot quickly.

### Step 3 — Installing the collar



- After you have the boot collar secured to the fabric, remove the inner sleeve from the collar. Slide the boot and collar down onto the shift rod.
- Thread the stainless steel sleeve onto the rod.
- Once you have your shift knob threaded on, use a wrench to tighten the stainless steel sleeve against the knob, locking it into place.
- Slide the collar up and it will clip into place.

## Step 4 — Installing the collar



- One unique feature of our boot collar is that it has two settings which can work with a variety of shift knobs.
- If you prefer to use the OEM Honda knobs, our boot will clip up to conceal the lower lip. (OEM FK8 Type-R Knob Shown)
- Install the shift knob and position it to your liking. Use a wrench and tighten the sleeve against the collar.
- Slide the collar up and it will click into place closing the gap for a nice OEM finish.

## Step 5 — Enjoy!



- This adaptable shift boot collar is a universal part that works with any fabric shift boot and any shift knob!
- Enjoy!