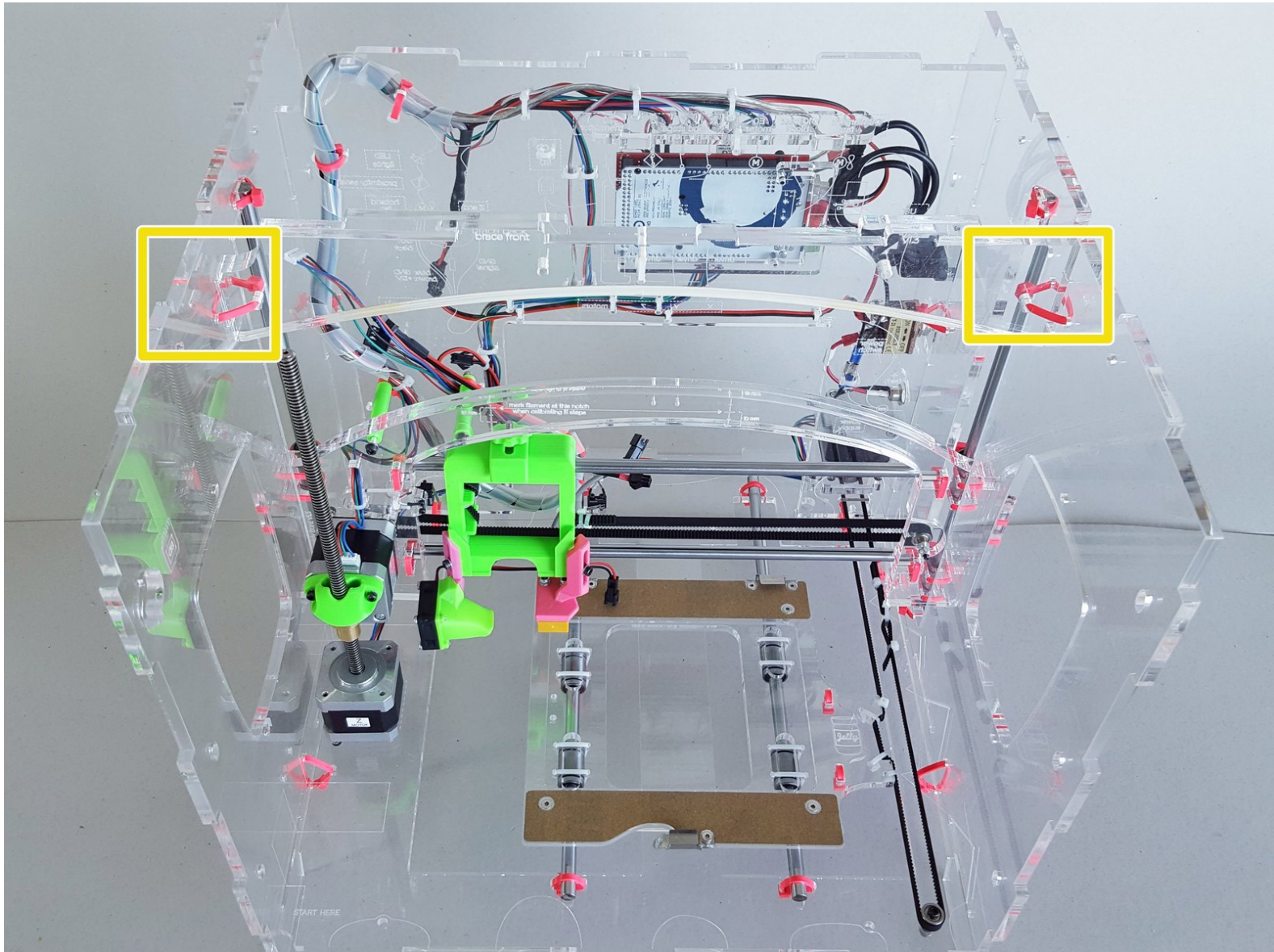
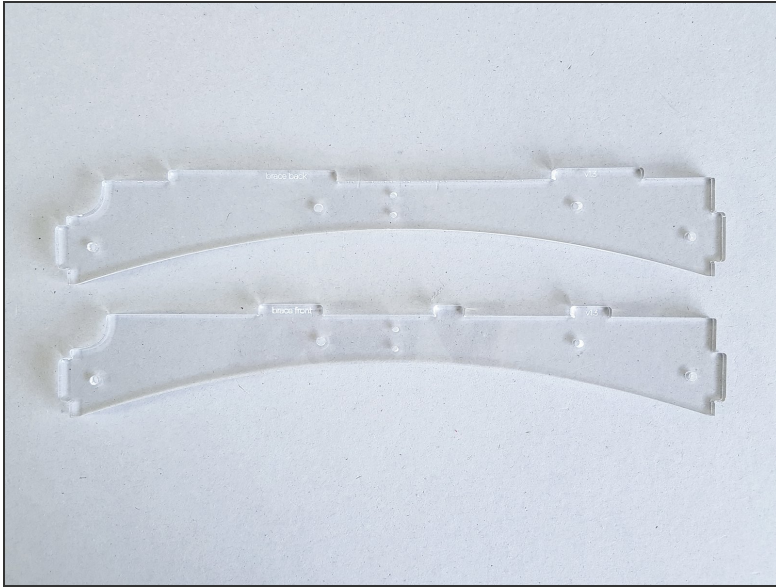




Install the Brace

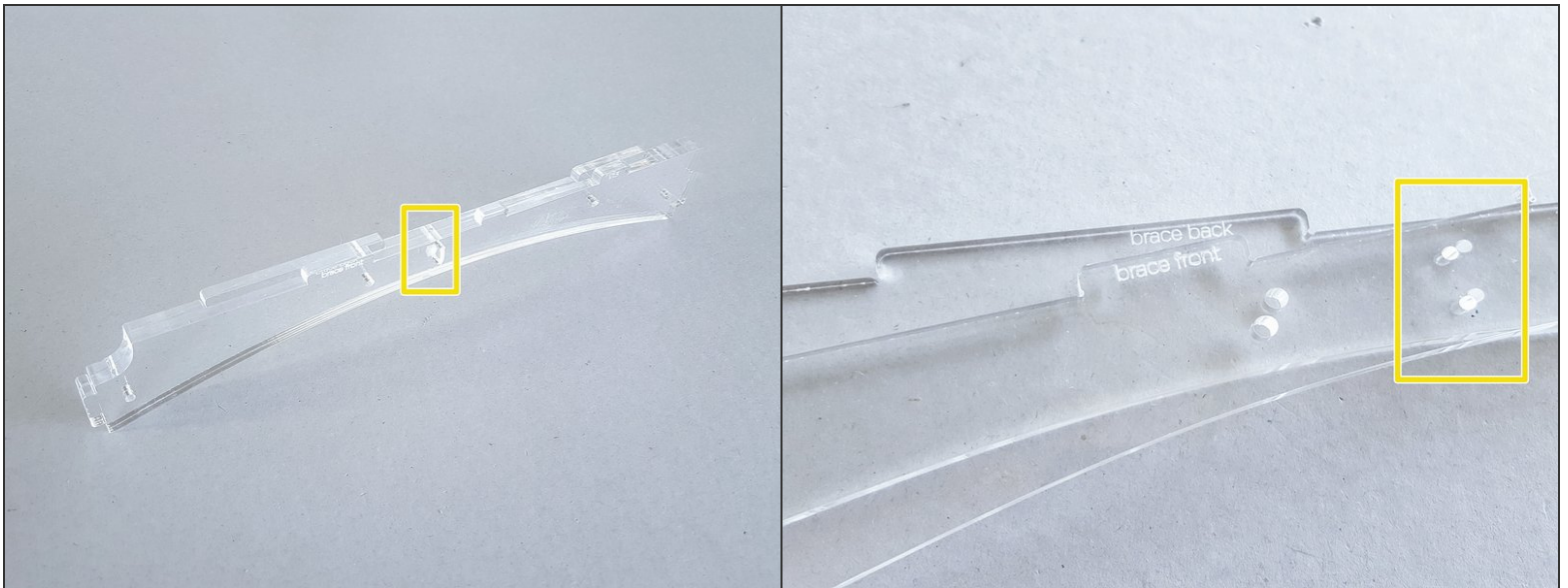


Step 1 — ↳ Prepare the Brace



- Brace Front
- Brace Back

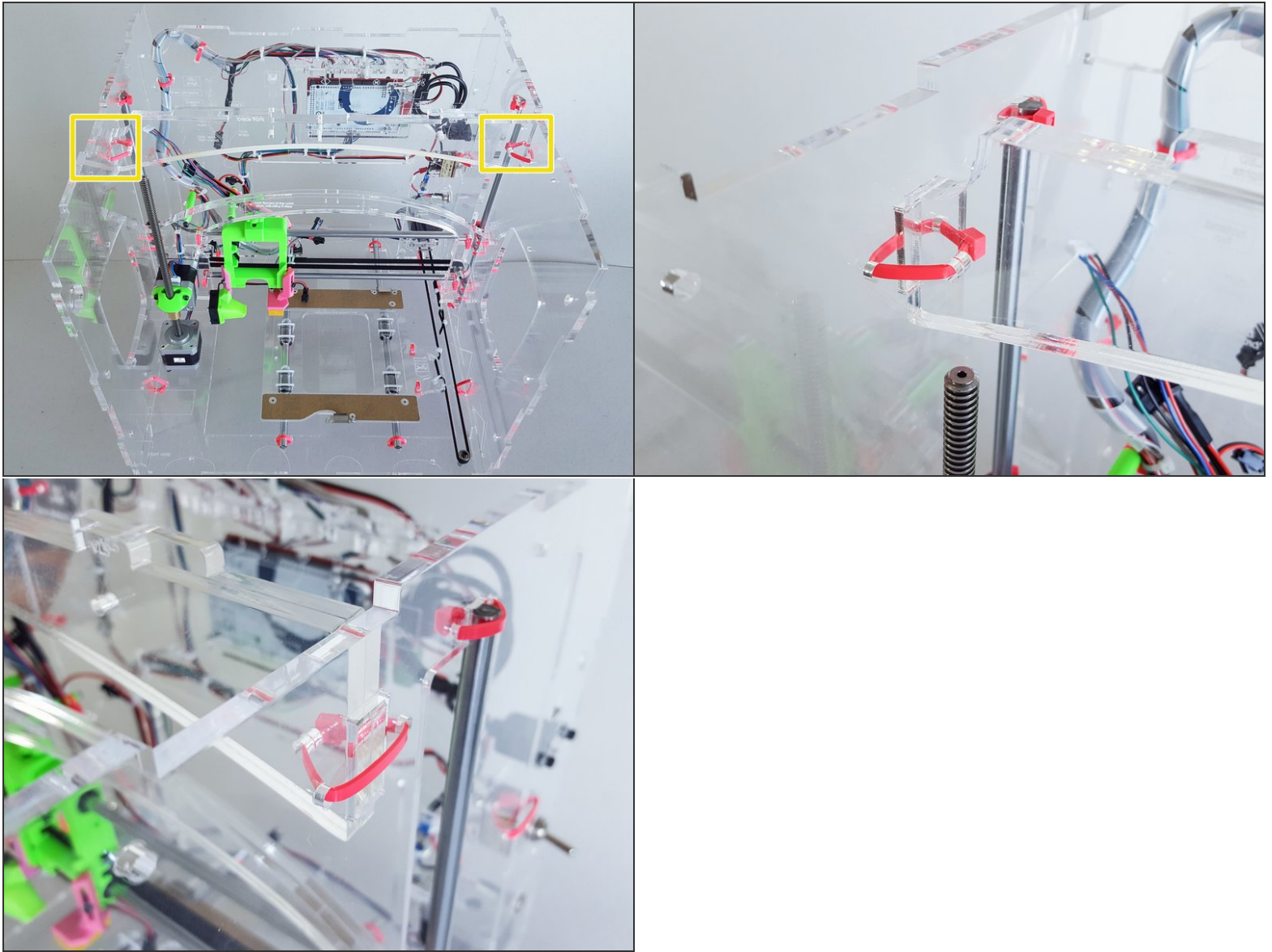
Step 2



- 4" zip tie

Use a soft cloth to clean the brace parts. Any fingerprints or dirt stuck between the two will stay there... forever.

Step 3 — ↳ Install the Brace



- 5" zip ties
- Insert one side of the Brace first.
- **Gently** flex the sides of the printer to get the other side of the Brace into position.