



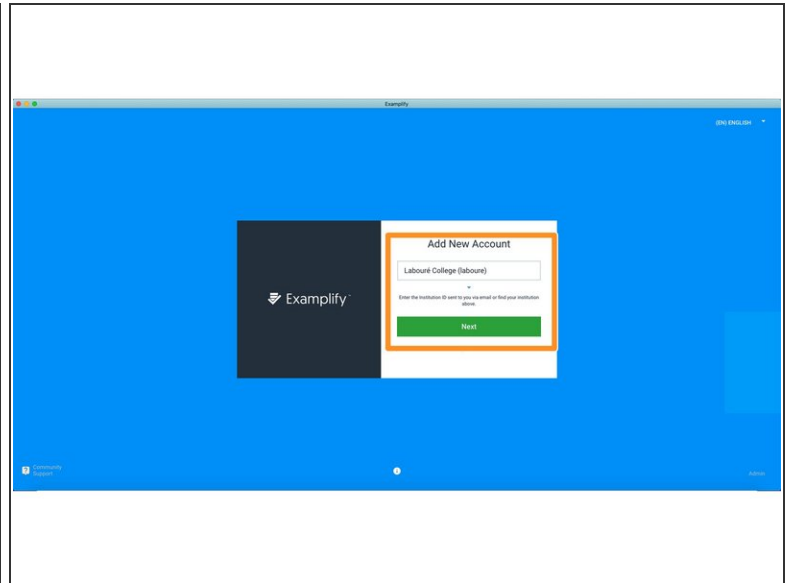
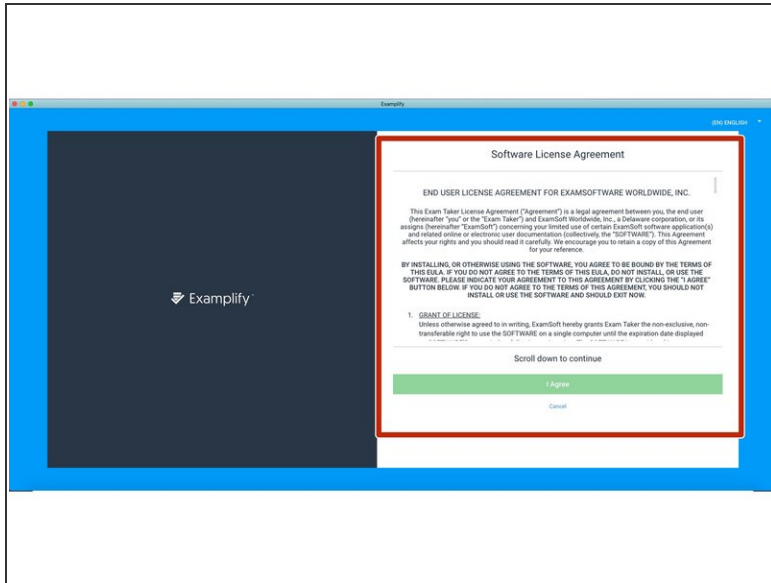
Log into the Exemplify Desktop App

The login process for the Exemplify Desktop App is the same on both Windows and Mac.

Written By: Wayne Peterson

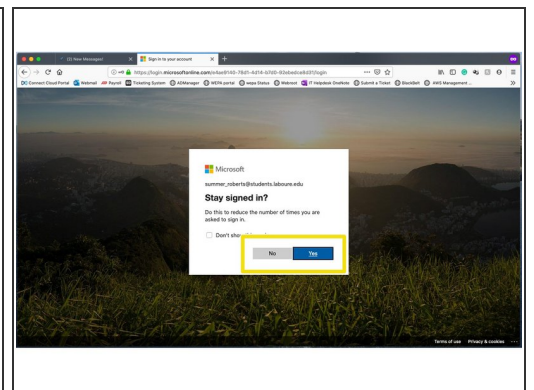
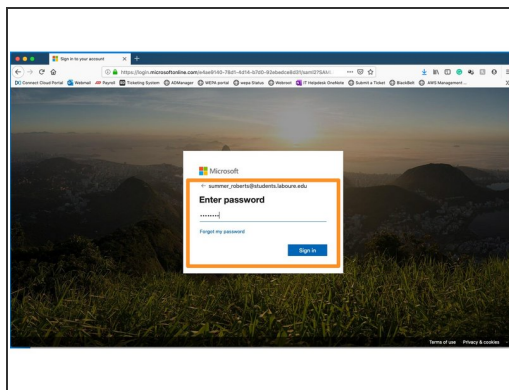
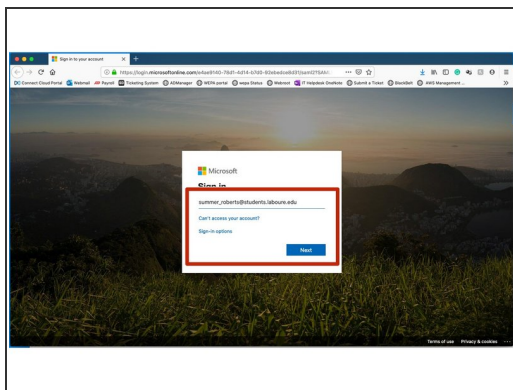
Log into
Exemplify
Desktop App

Step 1 — Log into the Exemplify Desktop App



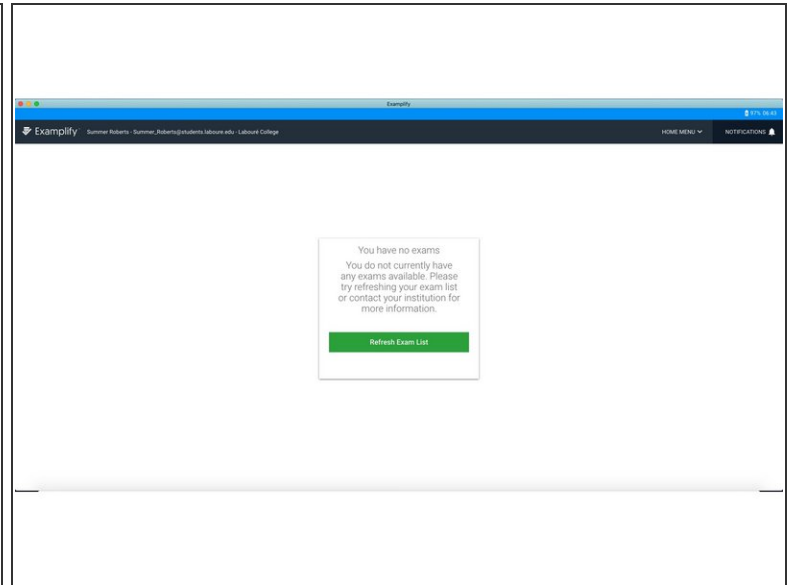
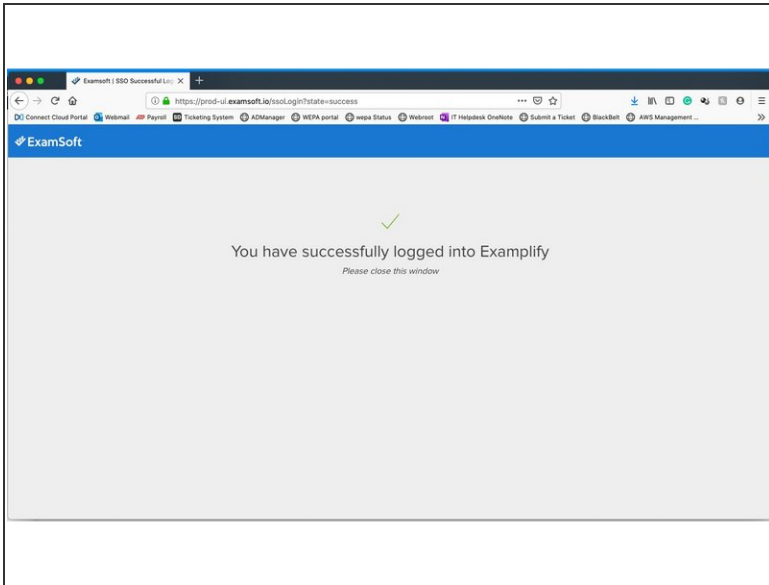
- Read the terms and conditions of the Exemplify license and click **Agree**
- In the Institution ID field, enter Labouré College and click **Next**

Step 2



- A new browser window will pop up and direct you to your Labouré email sign in page. Enter your full Labouré email address and click **Next**
- Enter the password to your Labouré email and click **Sign In**
- If you are on a personal computer, feel free to click Yes when asked if you want to stay signed in-- otherwise, click No.

Step 3



- You are now signed into the Exemplify application, you can close the browser window
- Any exams or assignments available will be listed on the main window of the Exemplify application.