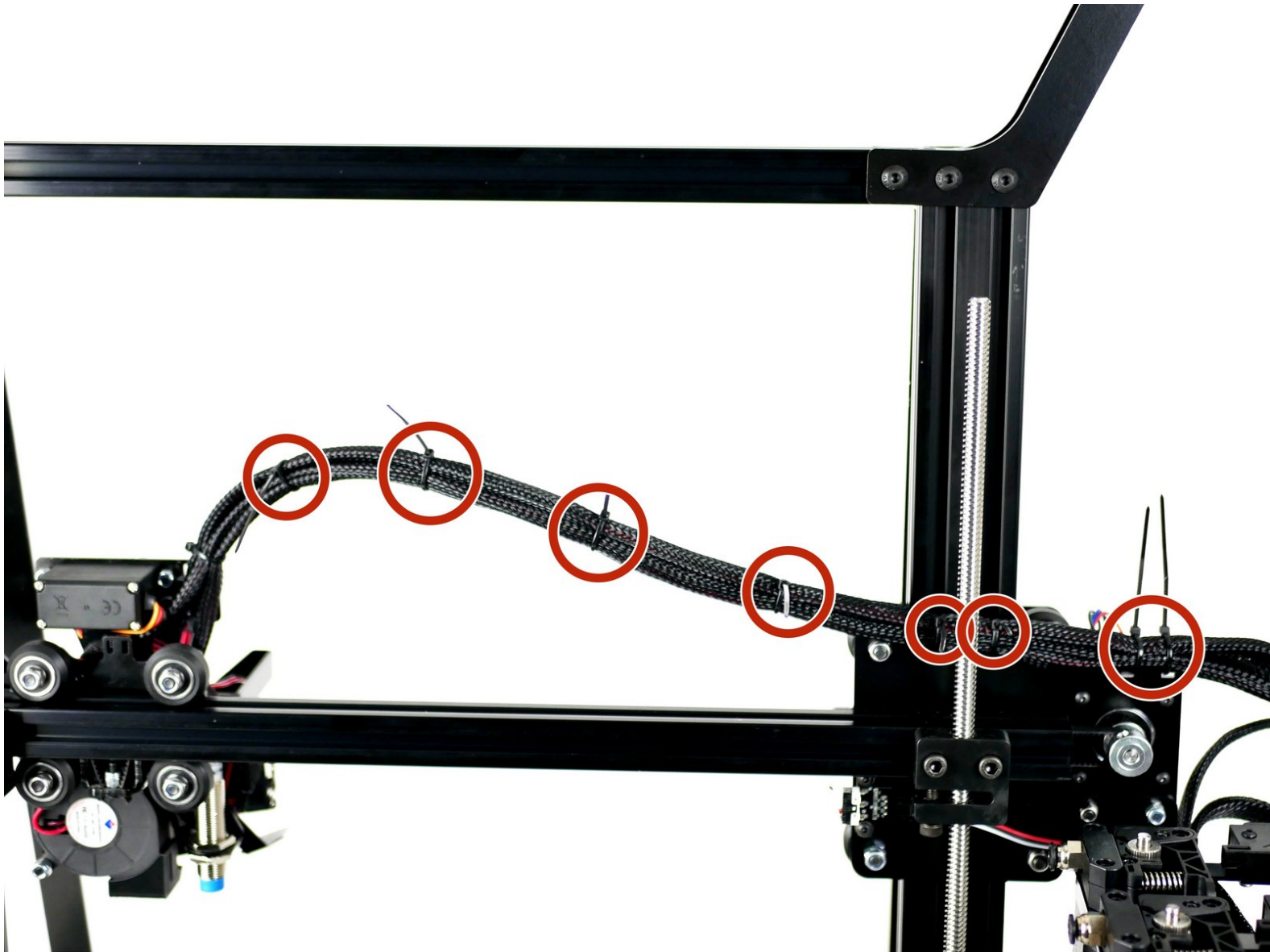


Makertech

DSE Only - Stage 06: Wiring

Written By: Makertech

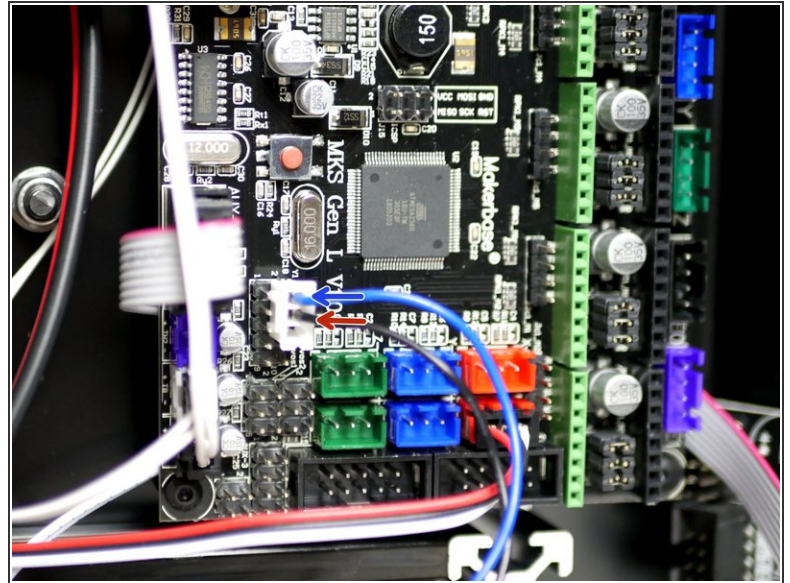
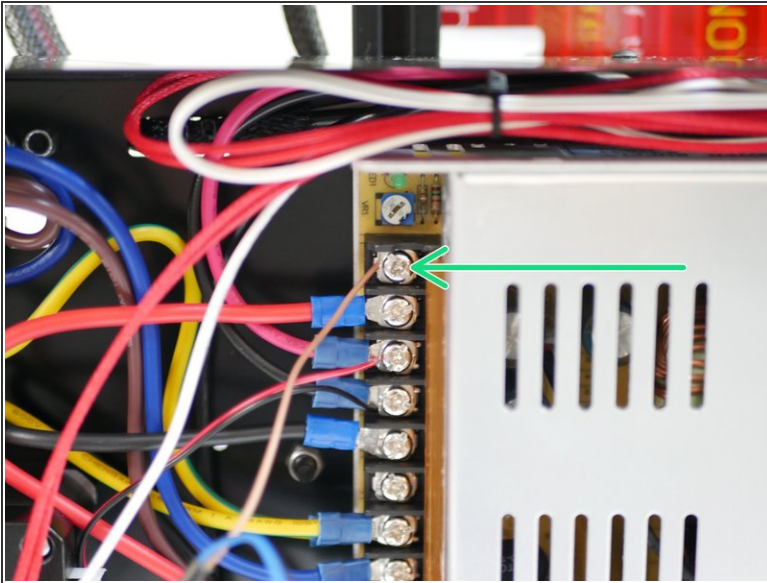


Step 1 — Wiring



- i** The steps outlined [here](#) will show you how to wire the DSE components to the MKS Gen_L board.
- i** If you're running a different board you will need to check its' schematics and wire accordingly.

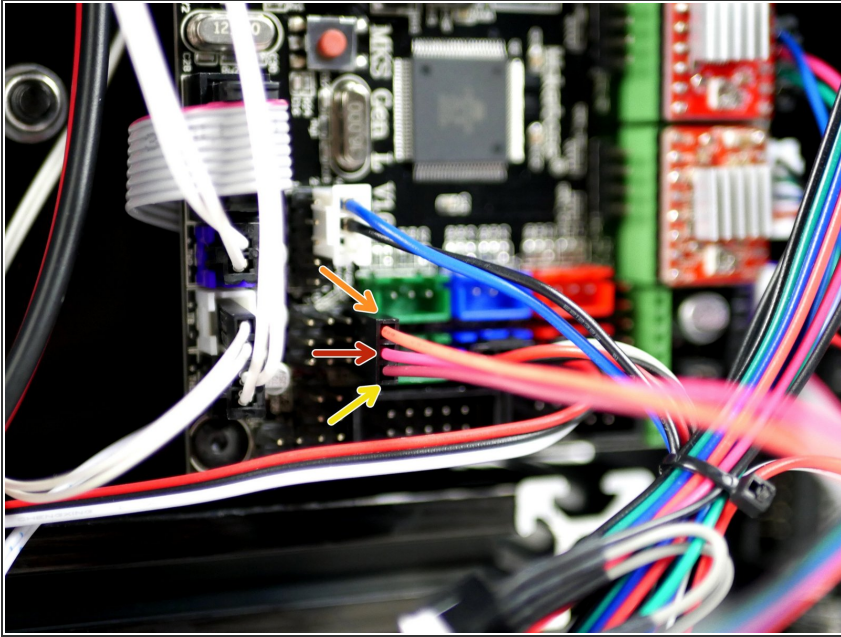
Step 2 — Probe Wiring



i If you are deciding to use the included probe for auto-levelling you will need to wire it like shown:

- Brown cable directly to 12/24V power.
- Blue cable goes to a ground (GND) pin on your board.
- Black cable goes to a digital (D) pin on your board. Make a note of this pin number as we'll be setting this in the firmware later.
- On the MKS GEN_L board this is pin D63

Step 3 — Servo Wiring



- i** Similarly the servo cable needs to be connected accordingly:
- Orange cable to a digital (D) pin.
 - On the MKS GEN_L this is the D4 pin.
 - Red Cable to 5V.
 - Brown cable to ground (GND)