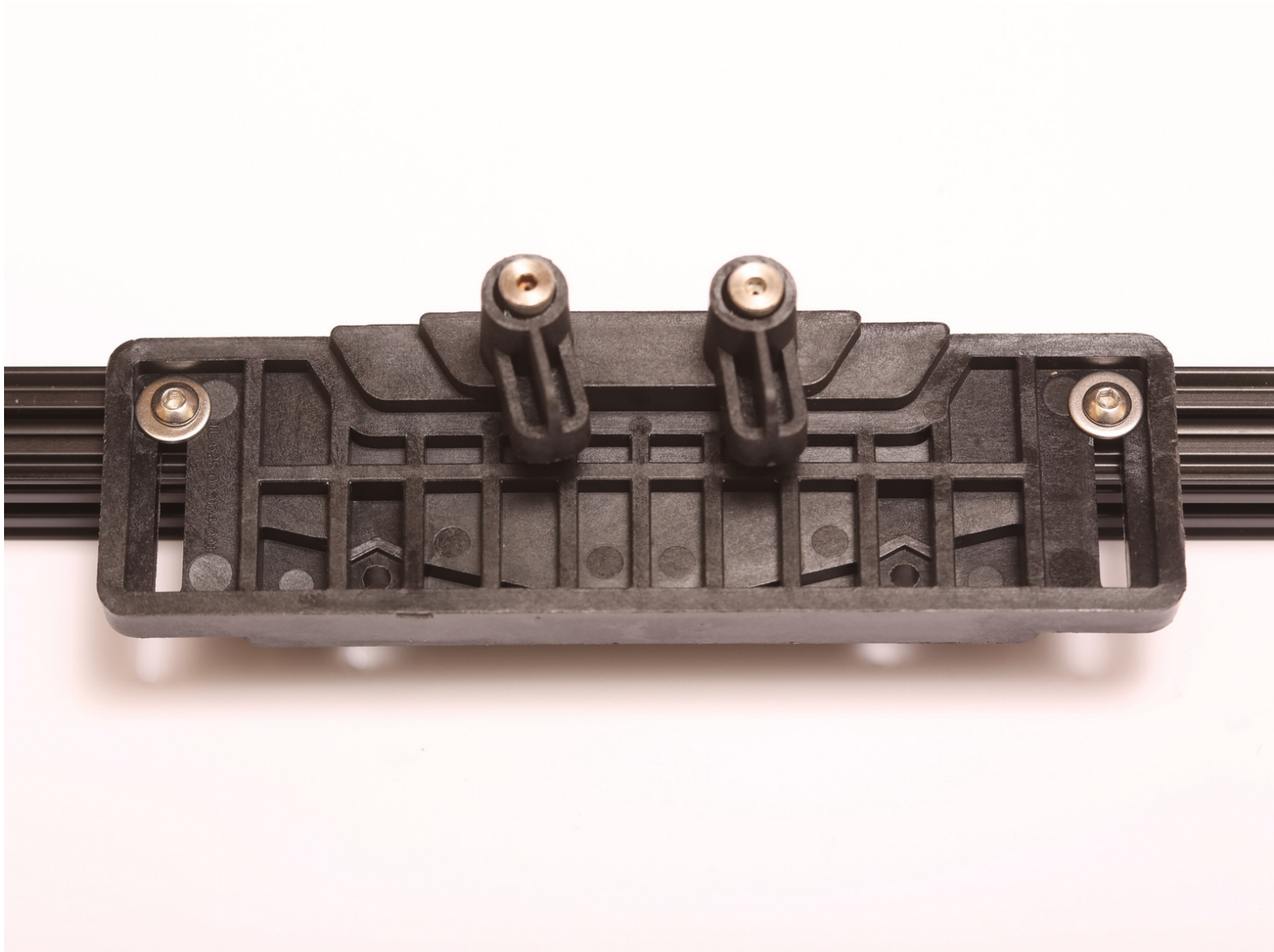


MatterHackers

Kossel Pro Bed Clamp Assembly

Written By: Tyler Anderson



INTRODUCTION

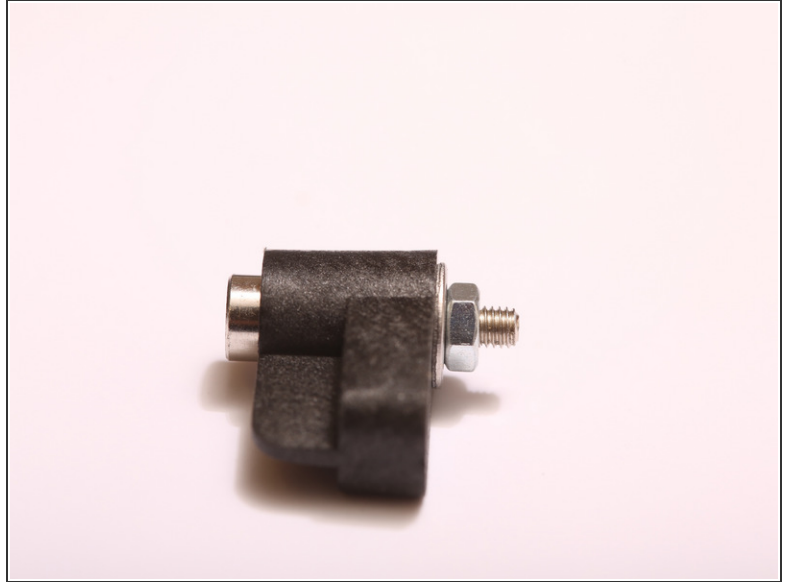
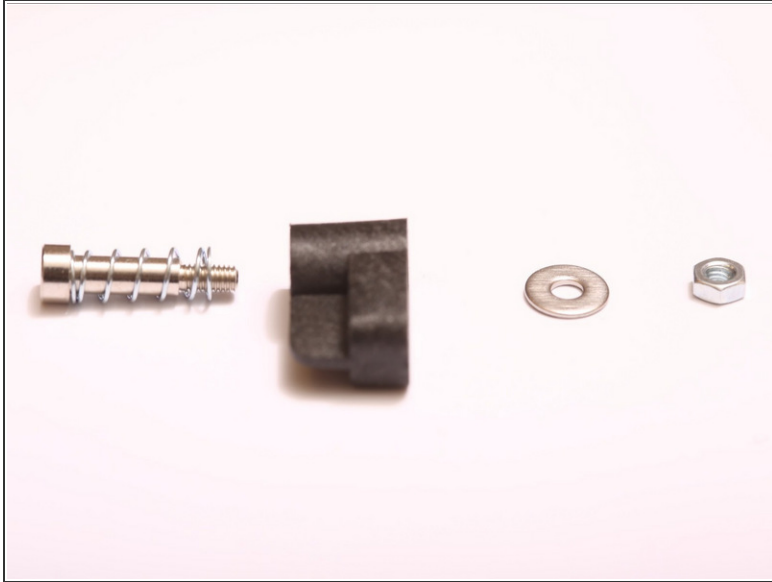
The Bed Clamp Kit can be built in 2 configurations. Configuration one supports the HBP build plate, while configuration two supports a regular round glass plate. In this document, we will be building the HBP version of the bed clamp.



PARTS:

- [TL-625-00124 Plastic Print Bed Mount](#) (3)
 - [M3 Nut](#) (12)
 - [M3x8mm Screw](#) (6)
 - [M3x10mm Screw](#) (6)
 - [TL-625-00125 Plastic Print Bed Clamp](#) (6)
 - [ZT-HWA-00138 Bed Clamp Spring](#) (6)
 - [M3 Fender Washer](#) (12)
 - [ZT-HWA-00127 Shoulder Bolt](#) (6)
-

Step 1 — Load Sprint Onto Standoff



- Create a fastener stack as shown

Step 2 — Repeat for all 6 clamps



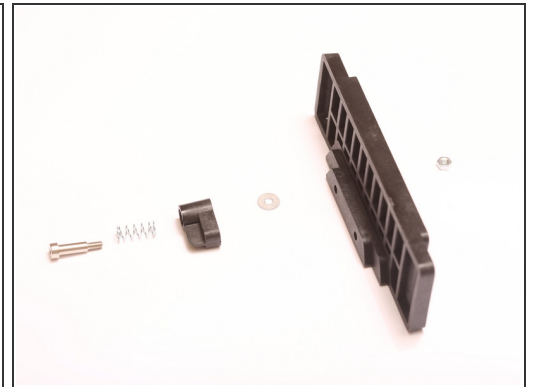
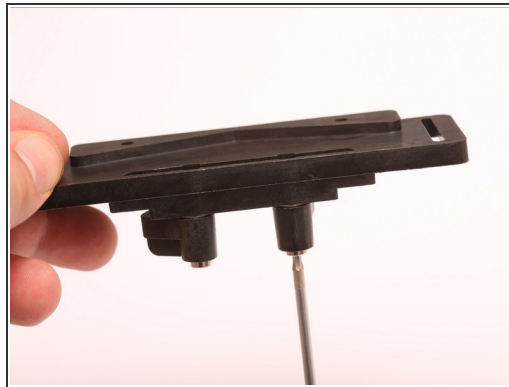
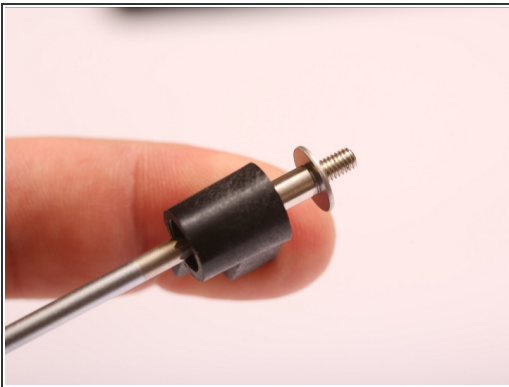
- Repeat for all 6 clamps

Step 3 — Insert M3 Nut



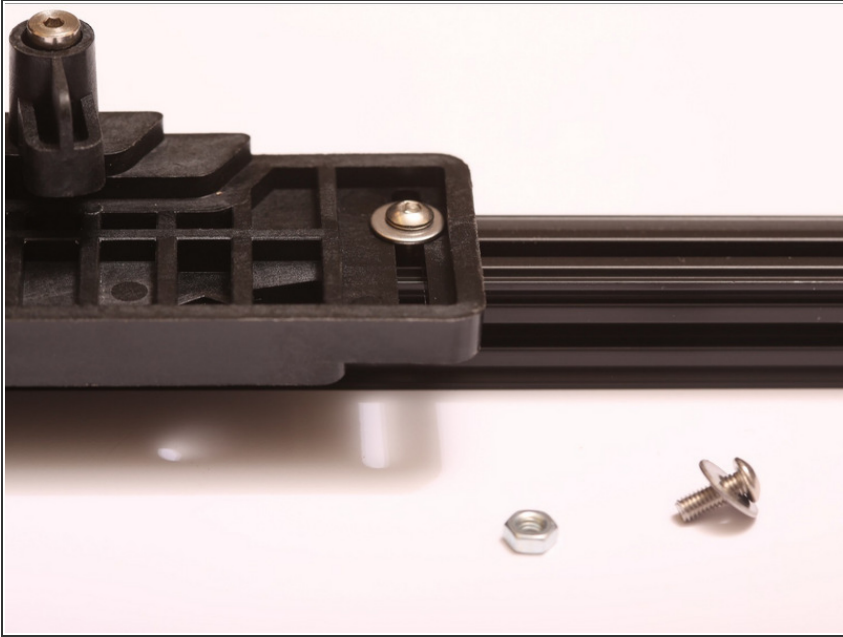
- Orient the bed clamp part as shown below. One at a time, load a M3 nut into the highlighted position.
- Terence's Tip: It may be easier to skewer the M3 nut onto the end of the 2mm hex driver, and place the nut down the recess.

Step 4 — Assembly



- Keeping the bed holder oriented as shown, load the spring / shoulder bolt / clamp assembly onto the end of the 2mm hex driver and compress the spring. Place fender washer onto the threaded portion of the shoulder bolt.
- Approach the bed clamp from the bottom, and thread the threaded section of the shoulder bolt up through the hole, turning to engage the nut.
- Repeat for the other side.
- Repeat for all 3 pieces.

Step 5 — Set Aside



- Set bed clamp aside with the M3 x 8mm button head cap screws and the M3 fender washers for mounting to the Lower Triangle later.

This document was last generated on 2017-06-17 11:02:51 PM.