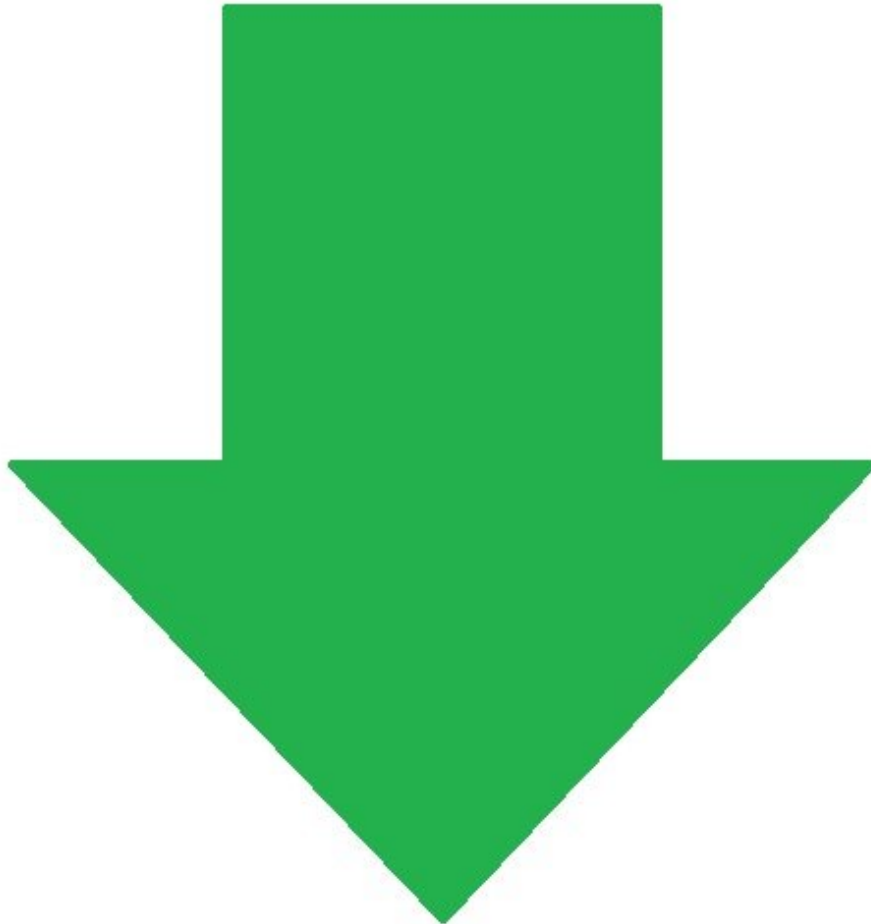


# MatterHackers

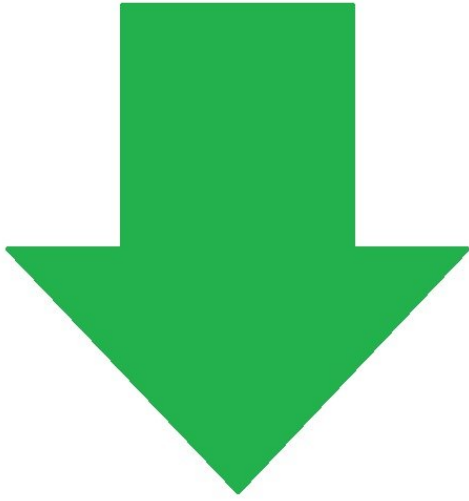
## How to Add an E3D v6 Profile to MatterControl (version 1.5.3 and previous)

This guide will demonstrate how to install a pre-configured profile into the MatterControl program files directory. NOTE: These instructions are not compatible with MatterControl 1.6 and later.

Written By: Ryan Lutz

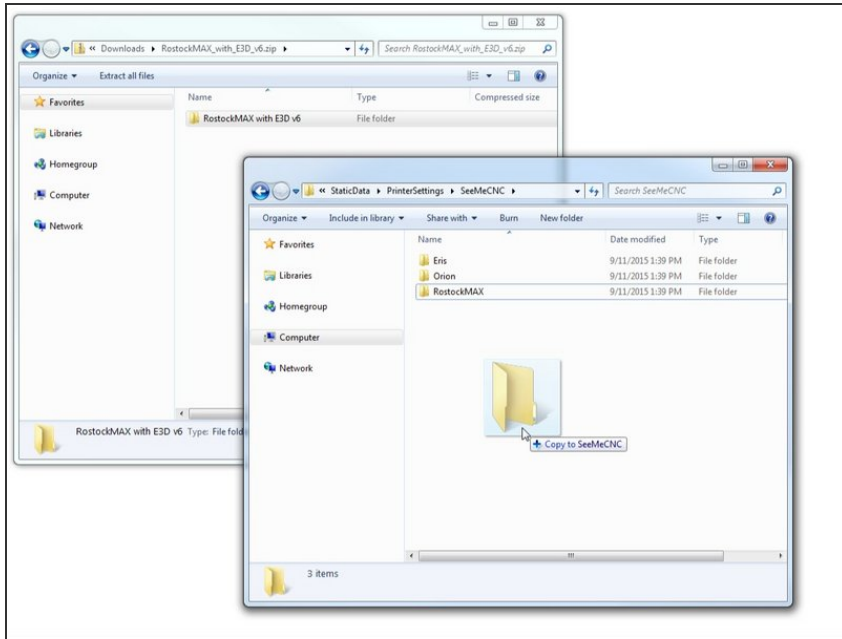


## Step 1 — Download



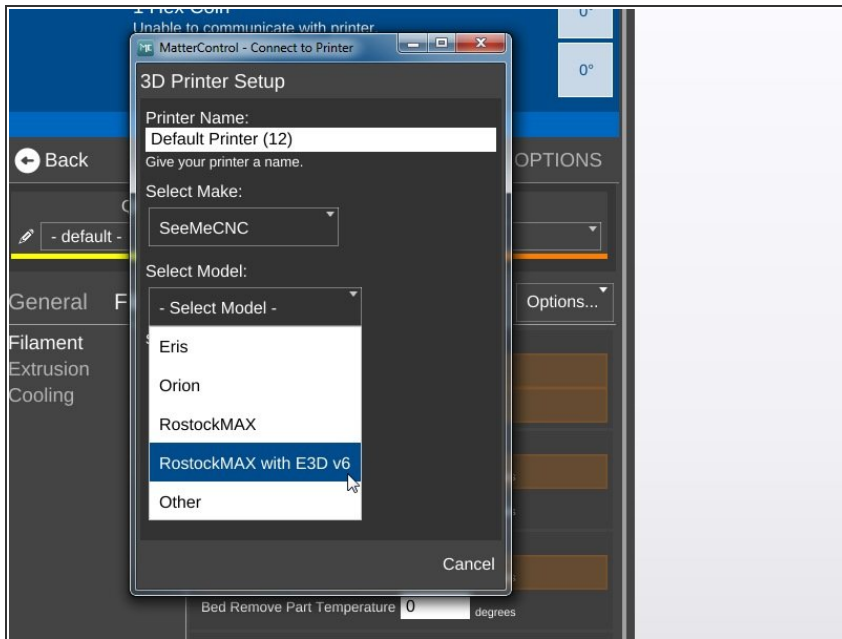
- Download the pre-configured profile:
- [Rostock MAX V2](#)

## Step 2



- Unzip and move the folder to the `.../PrinterSettings/%PRINTERMAKE %/` folder.
- For example, the 'Rostock MAX with E3D v6' folder would be moved to `.../PrinterSettings/SeeMeCNC/`
- In Windows, the folder is located at `C:\Program Files\MatterControl\StaticData\PrinterSettings\ (32-bit)` or `C:\Program Files (x86)\MatterControl\StaticData\PrinterSettings\ (64-bit)`
- For Mac, right click on MatterControl in the Applications folder and select Show Package Contents -> `Contents/MonoBundle/StaticData/PrinterSettings/`
- For Linux, the folder is found at `/usr/lib/MatterControl/StaticData/PrinterSettings/`

## Step 3



- Open MatterControl and select the new printer option from the 'Select Model' menu in the printer configuration wizard.