

# MatterHackers

## How to Add a Model to a Print Queue Using MatterControl Sync


Written By: Ryan Lutz



[Dashboard](#) [Instructions](#) [Sign Out](#)

### My Devices


SeeMeCNC RostockMAX (SeeMeCNC - RostockMAX)

Connected 

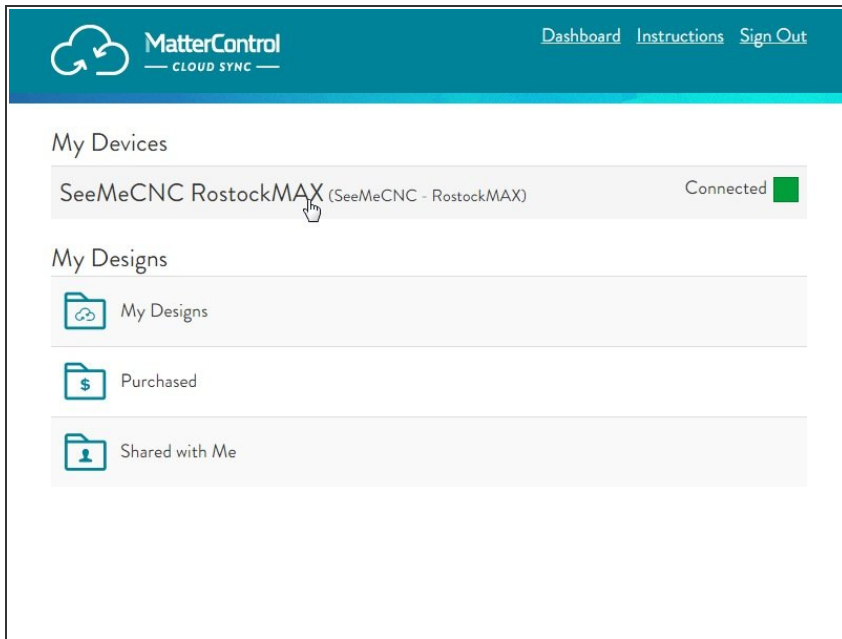
### My Designs

 My Designs

 Purchased

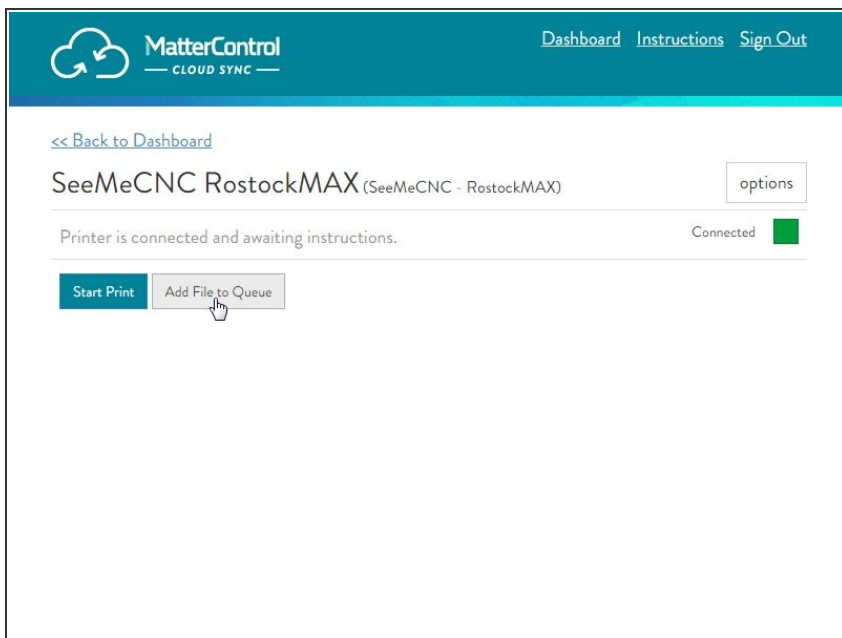
 Shared with Me

## Step 1 — Sign in



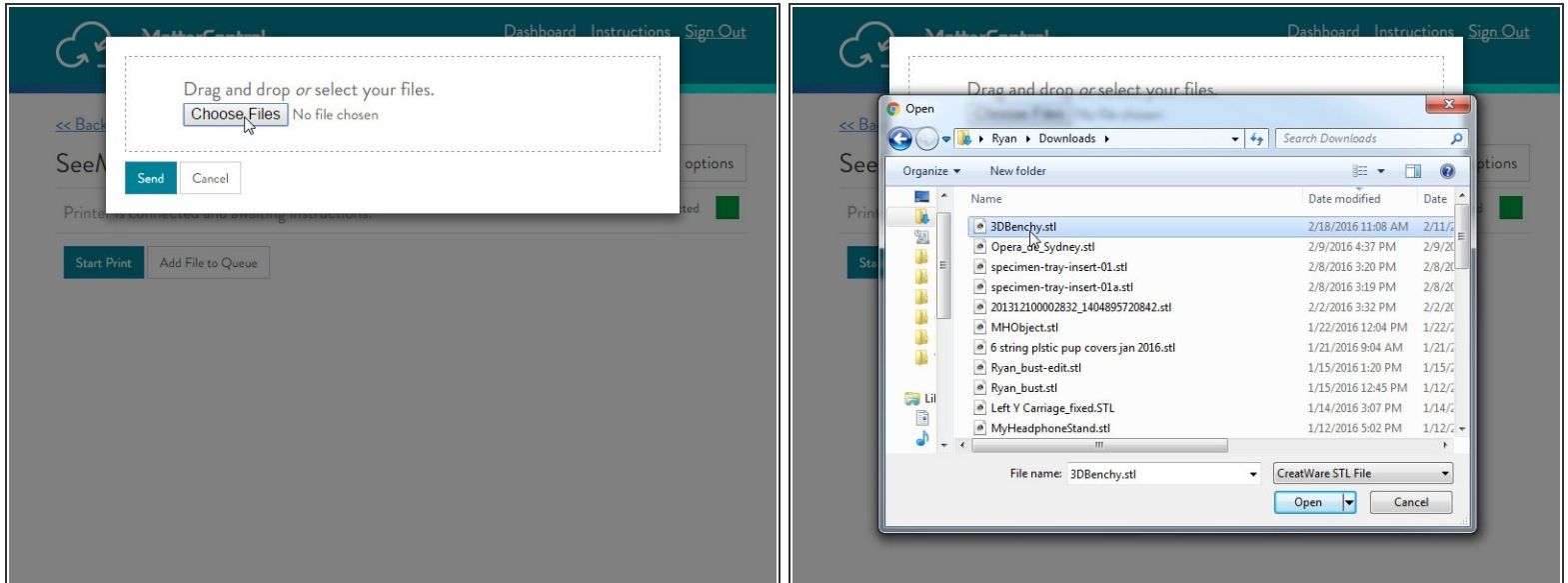
- Navigate to the [MatterControl Cloud Sync Dashboard](#).
- If you don't already have a MatterHackers account, create one [here](#).
- Click on the printer you want to send a print to.

## Step 2 — Add File



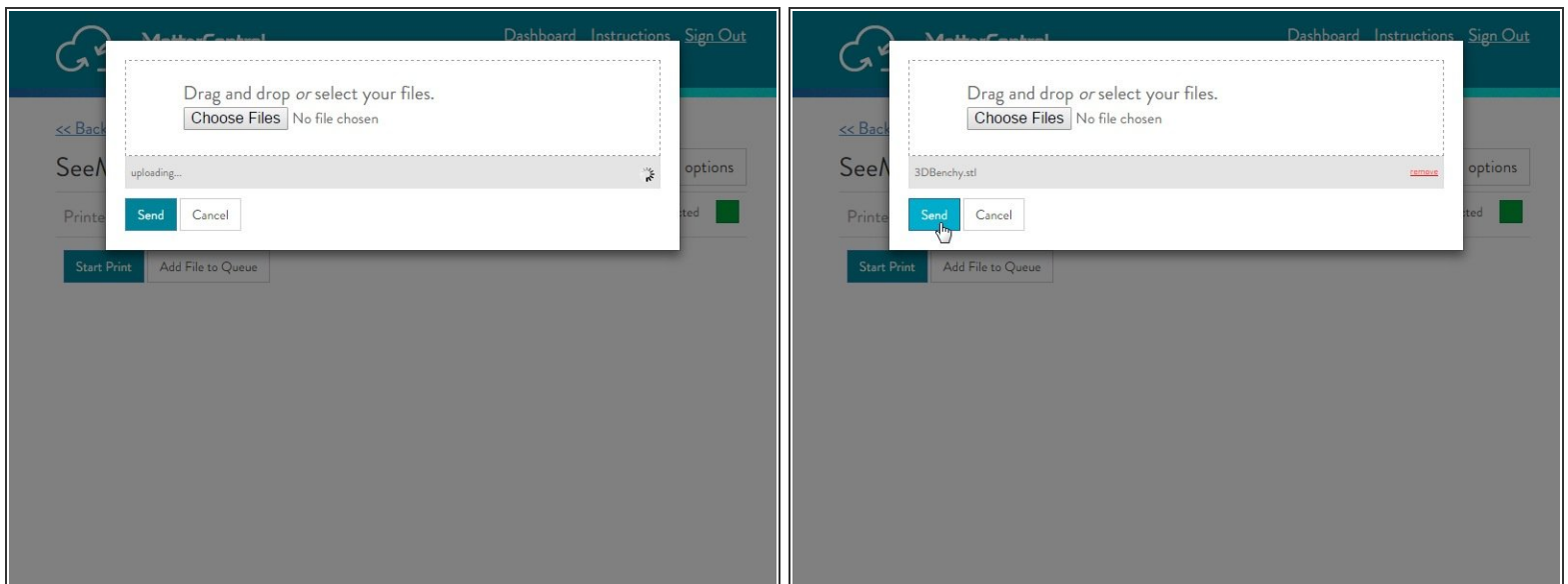
- Click 'Add File to Queue'.

### Step 3 — Choose File



- Click 'Choose Files' and select the file(s) you want to add to the Queue.

### Step 4 — Send File



- Wait for the file to upload and then click 'Send'.