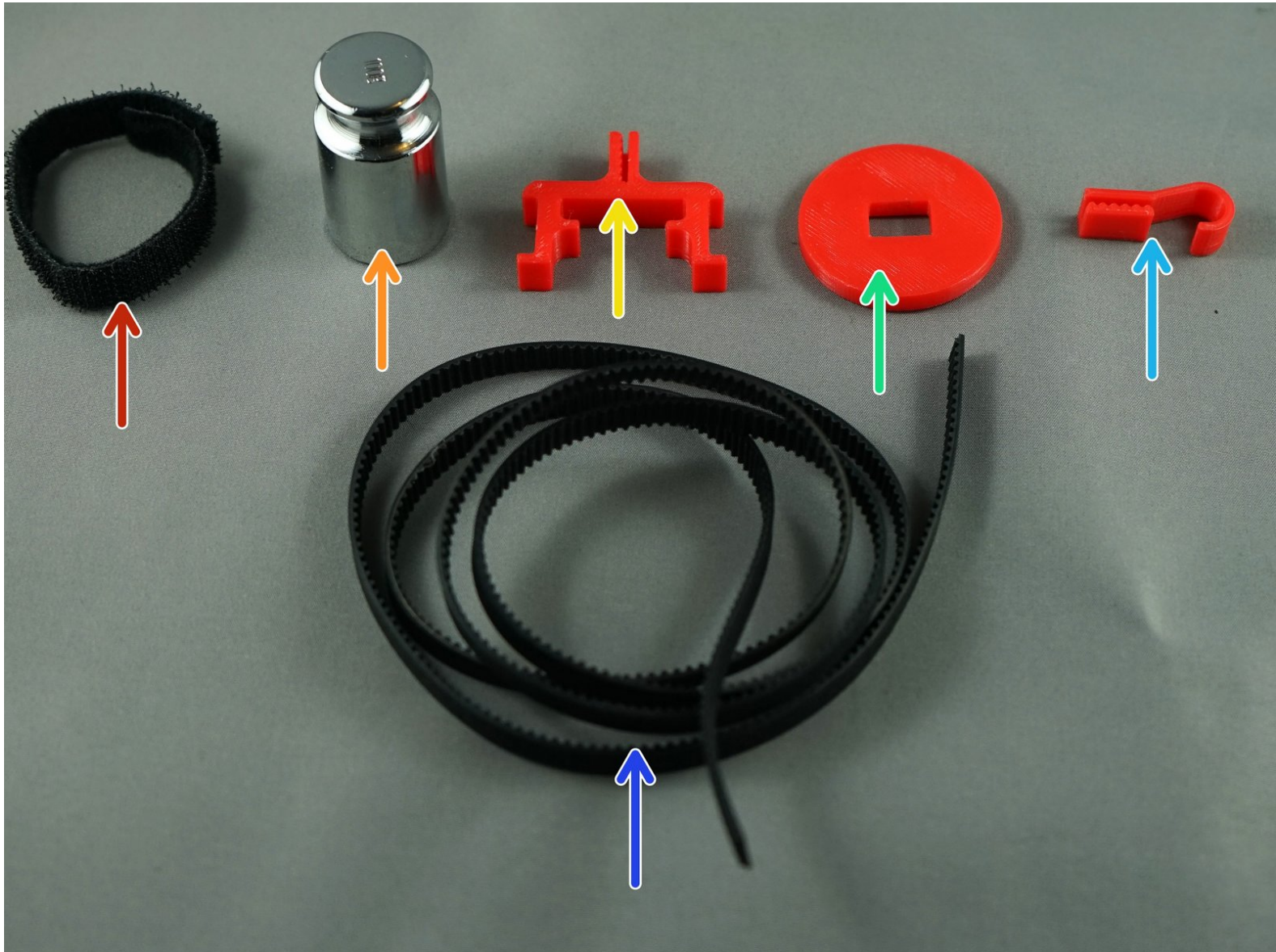


mcr

# 3. Counter Weight and Belt Assembly

Belt assembly instruction for Makelangelo 3.3 and 5.

Written By: Dan Royer

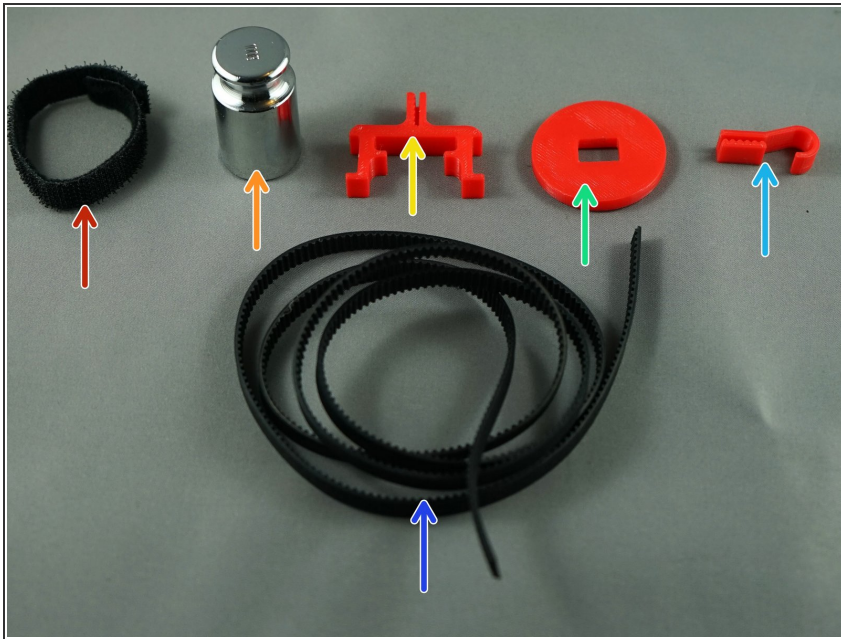


---

## **INTRODUCTION**

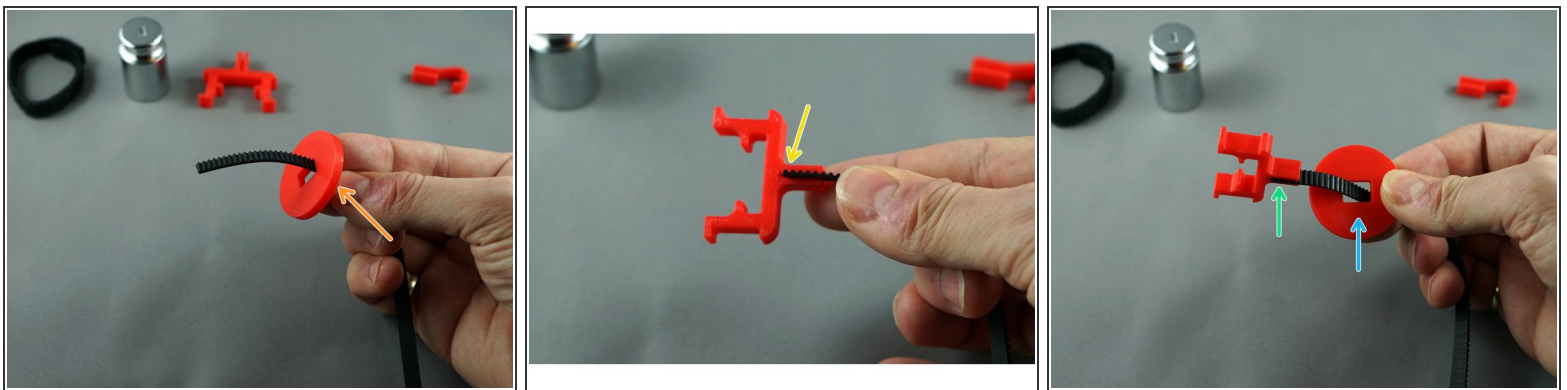
This guide is for Makelangelo 3, 3.3, and 5.

## Step 1 — Gather parts



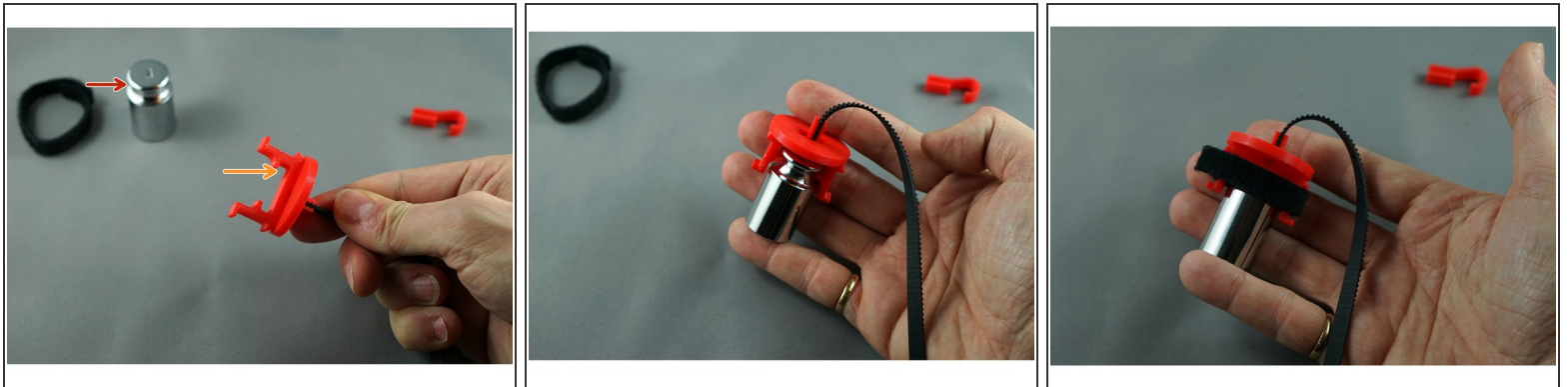
- 10x1cm of velcro
  - 100g weight
  - Y clip
  - Switch disc
  - Hook
  - GT2 timing belt
- (i)** Makelangelo robots have the exact same parts on two sides of the machine so get TWO of everything.

## Step 2 — Attach Y clip and Switch disc to belt



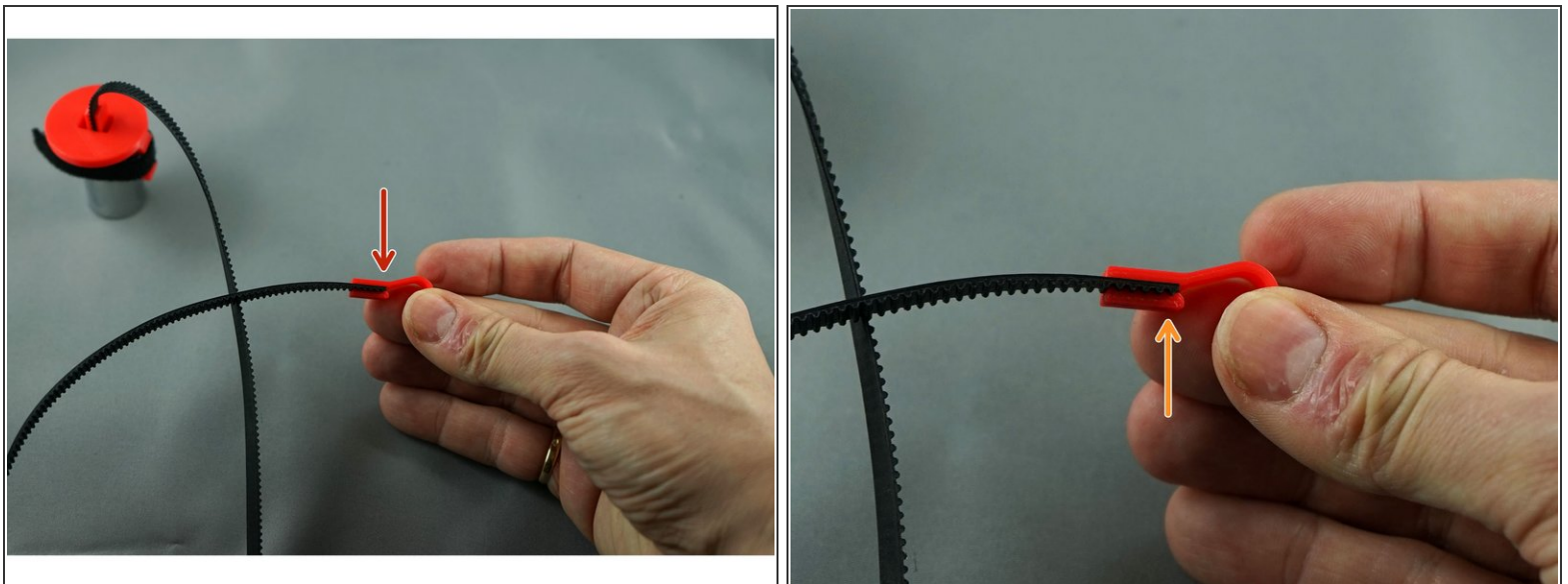
- Feed one end of the belt through the disc.
- Make sure the last tooth of the belt is completely into the Y clip.
- Press the belt into the groove. it is supposed to be a snug fit.
- Bring the disc in and press it over the Y clip so that the long side of the slot is pressed against the belt.

### Step 3 — Attach weight to Y clip



- The groove of the 100g weight...
- ...fits into the mating section of the Y clip.
- Then wrap the velcro around the Y clip to secure the weight in place.

### Step 4 — Attach the hook



- Press the other end of the belt into the hook.
- Make sure the last tooth of the belt is in the last tooth of the hook.
- ⓘ We use a robot to measure and cut belt precisely, so these press-fits have to be right for quality drawings.

Remember to do this once for each belt on a Makelangelo robot. Then wrap the belts around the weights and put them in a box for shipping.