

907ANT - 2019 Sprinter (907) Antenna Adapter

Install the 907INT OEM antenna adapter for 2019 Sprinter (907). This cable allows for use of the OEM antenna with an aftermarket radio (with amplification)

Written By: Noah Thatcher



INTRODUCTION

Installation of this harness involves following:

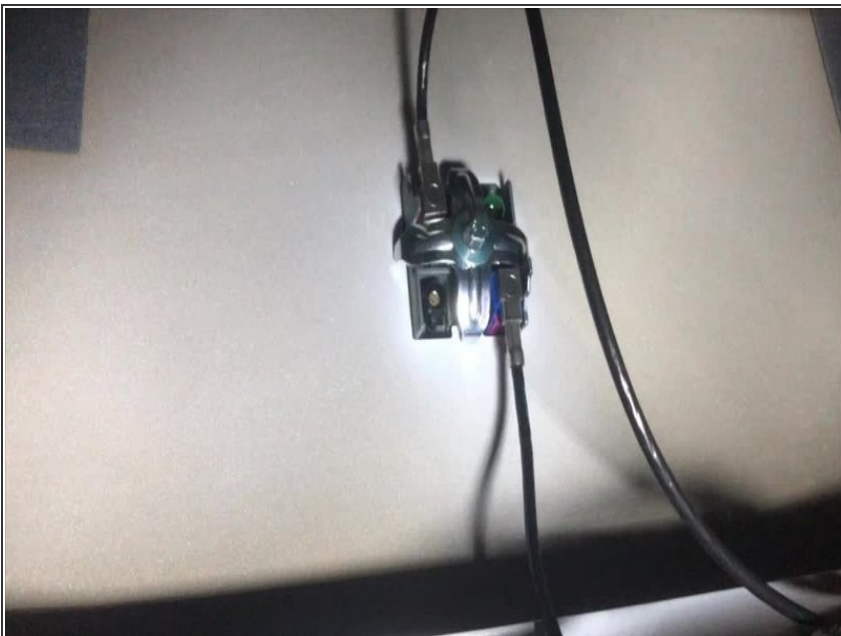
- Connection of antenna plug to factory antenna plug on underside of roof
- Running harness down 'A' pillar and into dash behind radio cavity
- Connection to antenna port on radio

Step 1 — Remove dome light console



- Using pry tool, release and lower dome light console
- Carefully un-plug white connector from dome console
- Un-plug blue connector from harness where felt terminates
- Set aside dome light console

Step 2 — Locate connector panel and make antenna connection



- Illuminate light cavity and locate connector panel on under side of roof
- Plug antenna adapter into open connector on driver side, closest to windshield

Step 3 — Remove plastic around mirror bracket



- Separate plastic pieces around mirror bracket and remove
- ⓘ This step is also required for installation of the 907CAM factory camera adapter- so if also installing that harness, it is recommended to make that connection now.

Step 4 — Run cable to passenger side 'A' pillar



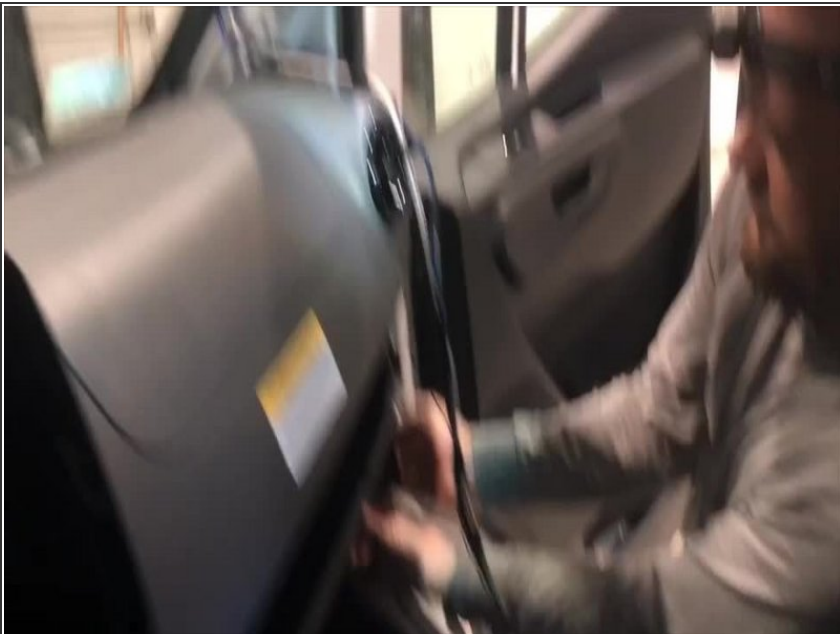
- Route harnessing along headliner over to passenger side 'A' pillar
- ⓘ This step through step 8 are also required for installation of the 907CAM factory camera adapter- so if also installing that harness, it is recommended that the harnessing is run at the same time

Step 5 — Run cable down 'A' pillar



- Remove trim along 'A' pillar
- Run and secure cable down 'A' pillar

Step 6 — Remove small panel and door seal at end of dash



- Remove small plastic panel at end of dash
- Pull off door seal

Step 7 — Remove passenger side knee bolster



- Remove 3 x T20 screws along top of bolster pocket
- Remove 2 x T20 screws along right side of knee bolster
- Remove 3 x T20 screws along bottom of knee bolster
- Pull knee bolster panel from dash and set aside

Step 8 — Route cable to radio cavity



- Route cable through dash and behind where radio will be mounted

Step 9 — Connections to radio



- Connect antenna plug to antenna port on aftermarket radio