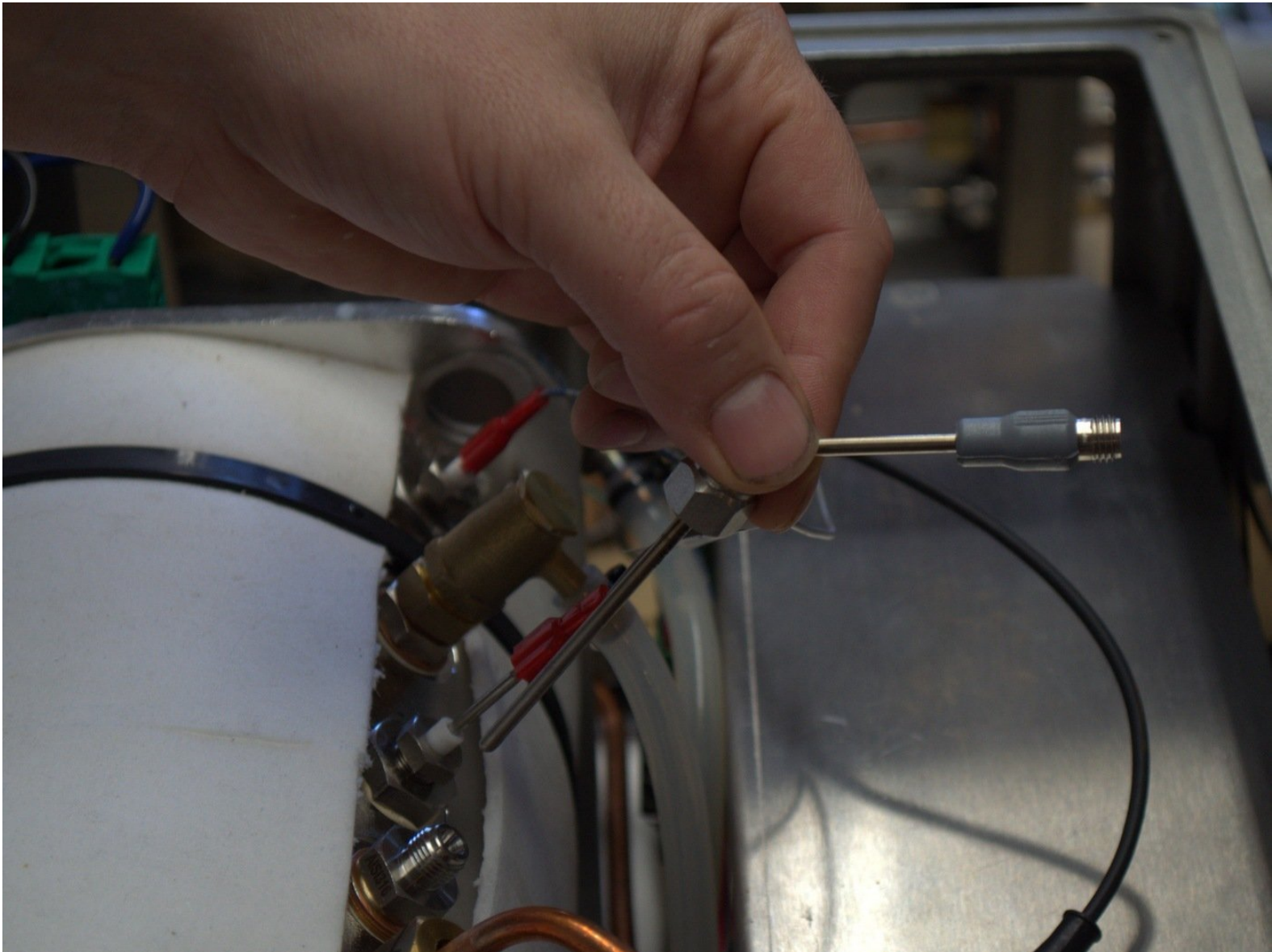


modbar

Steam Module RTD Replacement

This guide will walk us through replacing the RTD temperature probe in the Modbar Steam Module

Written By: Modbar Support



 **TOOLS:**

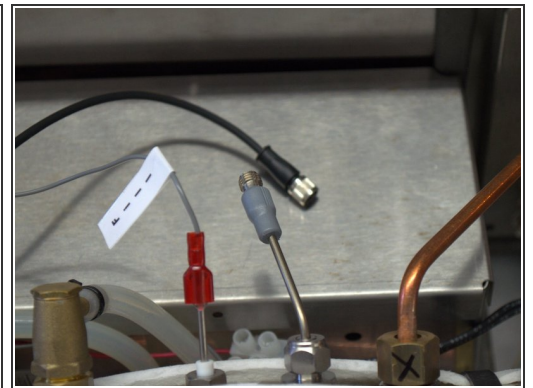
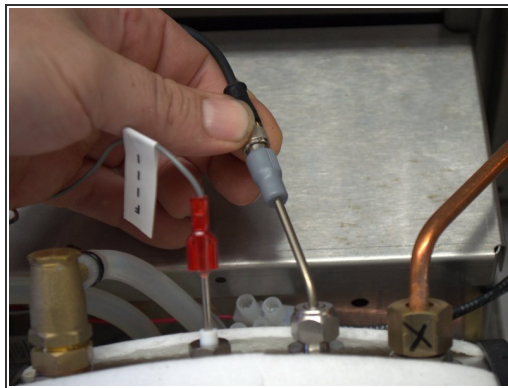
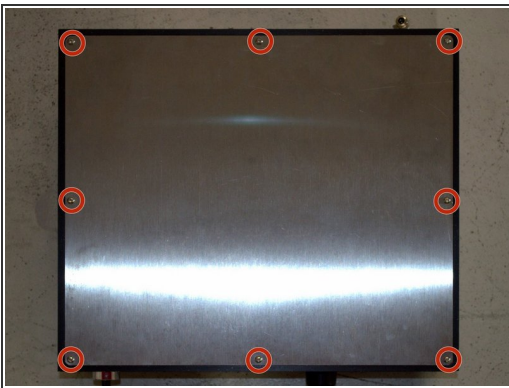
- [2.5mm Hex Wrench](#) (1)
 - [13mm Open End Wrench](#) (1)
 - [Black Marker](#) (1)
 - [Tape Measure](#) (1)
 - [#2 Phillips screwdriver](#) (1)
-

Step 1 — Steam Module RTD Replacement

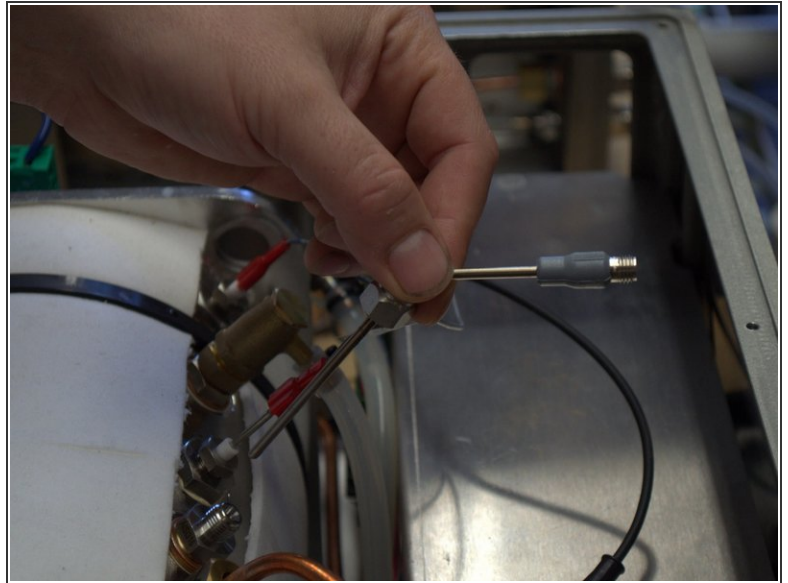
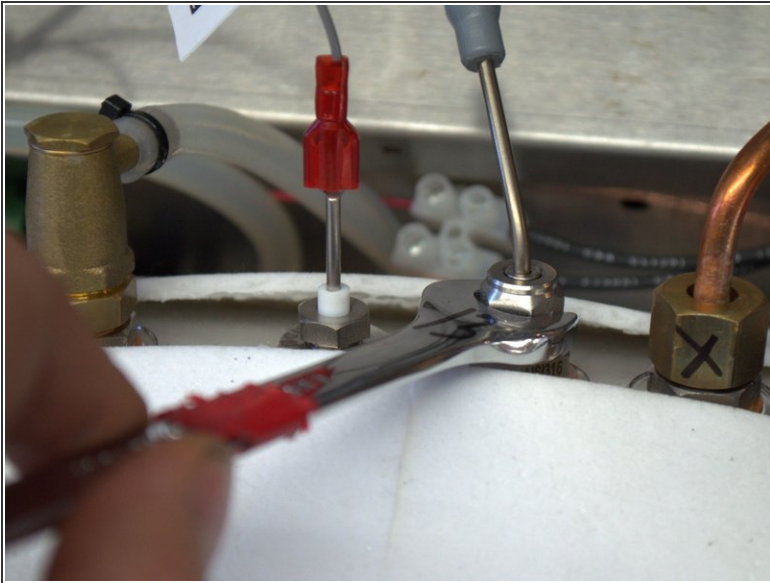


- Shut down steam module by turning power switch to the middle position and let cool down.
- ⚠ Open the steam tap(s) and dispense until steam ceases. This will ensure that no steam pressure is built in the boiler.
- If necessary due to space constraints: Turn off water supply to steam module and disconnect water line, drain line, and steam taps on the back of the module. Disconnect power cord from wall socket and move unit to a place where you can access all sides of module.

Step 2

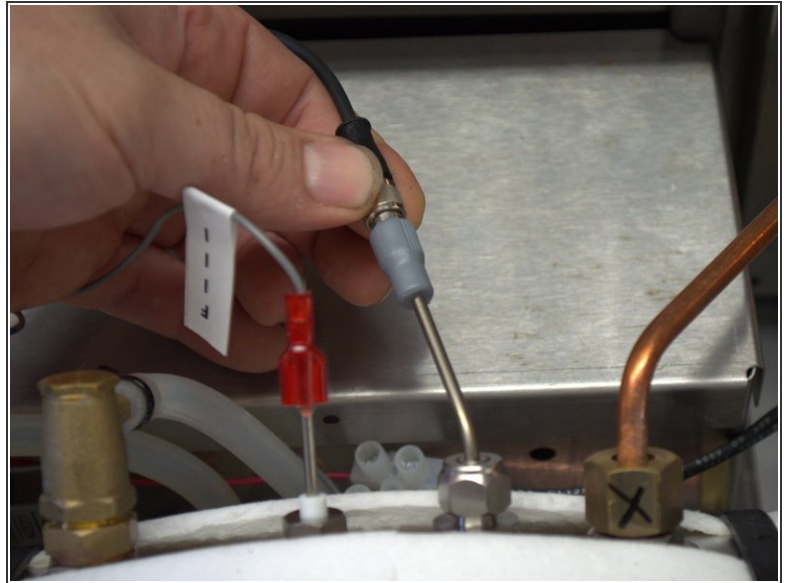
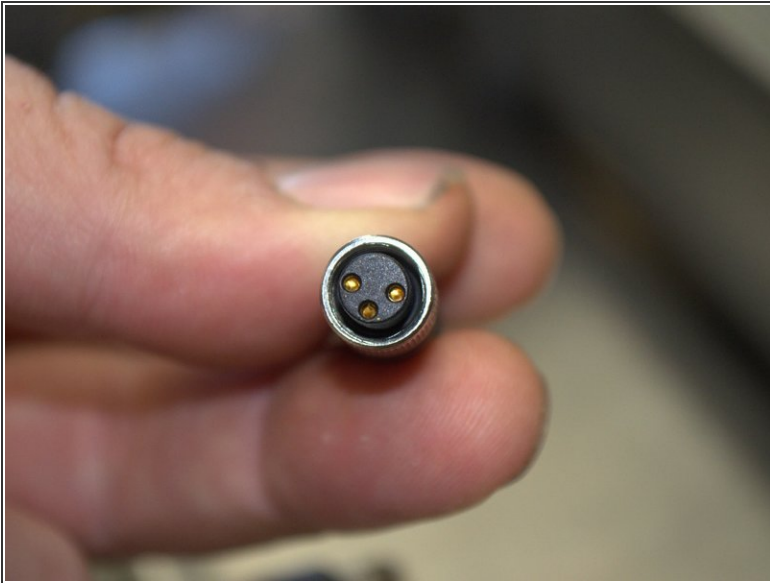


- Remove top panel from module to access fill probe and low level probe.
- Locate the RTD on the steam boiler. Disconnect the the wire from the end of the RTD by unscrewing the metal sleeve.

Step 3

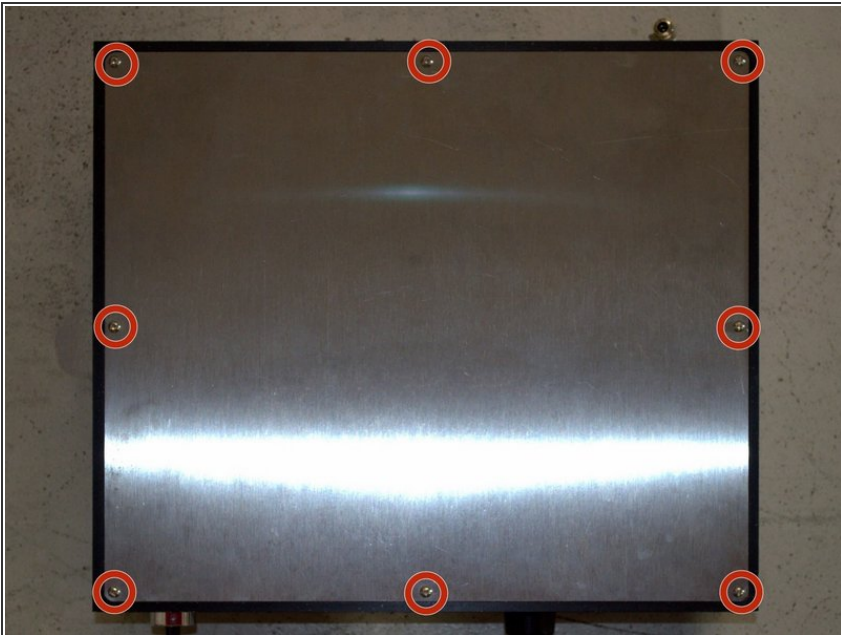
- Loosen the 13mm nut that holds the RTD in place.
- Remove the old RTD from the boiler.
- The new RTD will be pre-bent and ready for installation. Insert it, and tighten the nut.

Step 4



- Plug in the 3 pin wire connection to the RTD as it was. It only goes in one way, just be sure to get the 3 pins lined up and it should go in easy. Only tighten with two fingers, do not use pliers.

Step 5



- You can now reinstall the top cover, and put the module back into its installed position and hook up all water, drain, tap connections and power. Turn the module back on and check to be sure the temperature is displaying correctly. If you experience further issues please contact us for assistance.

