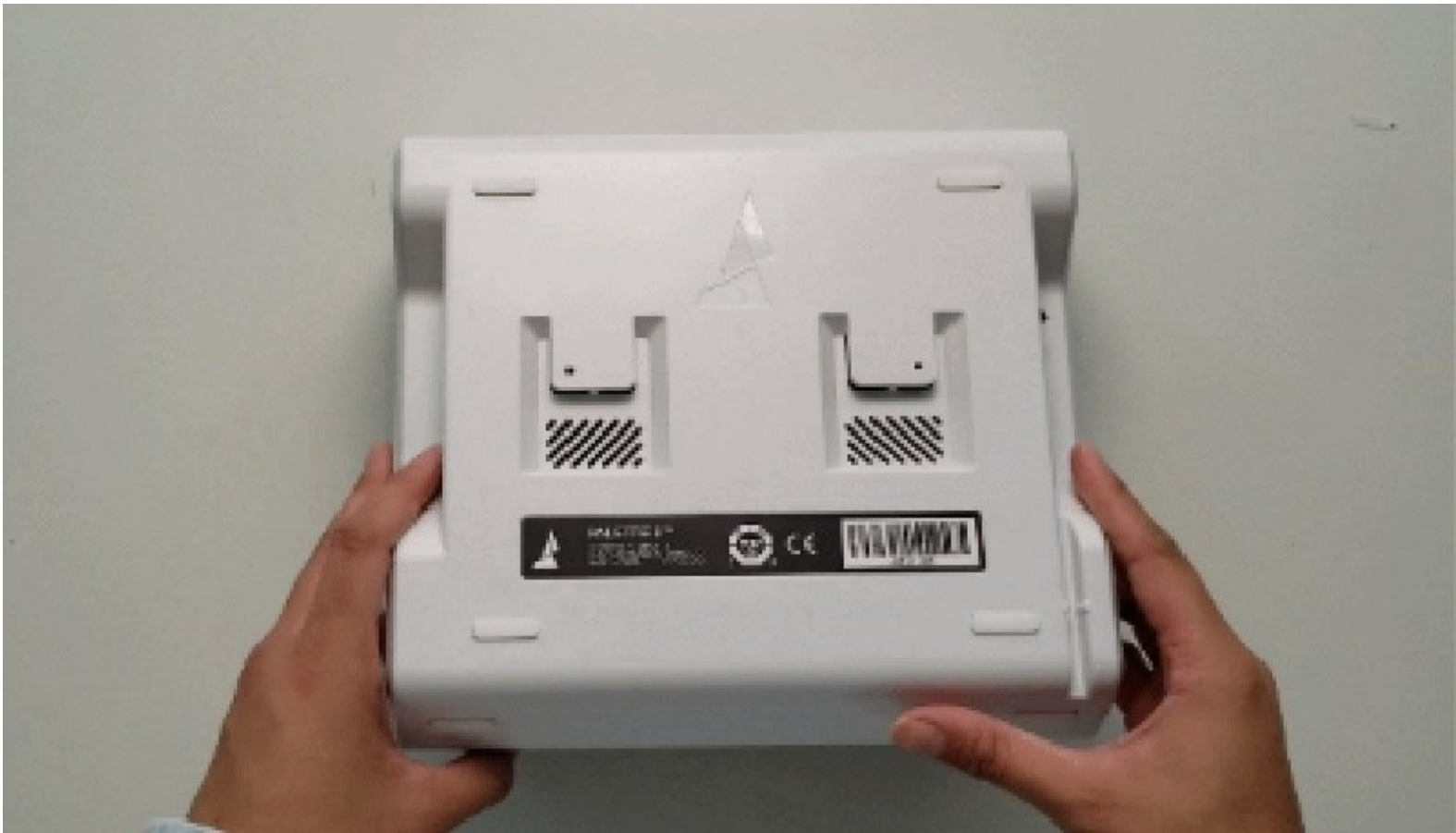




# Remove Bottom Casing

Instructions on how to remove Palette 2's bottom casing for maintenance and repair purposes.

Written By: Mosaic Support



---

## INTRODUCTION

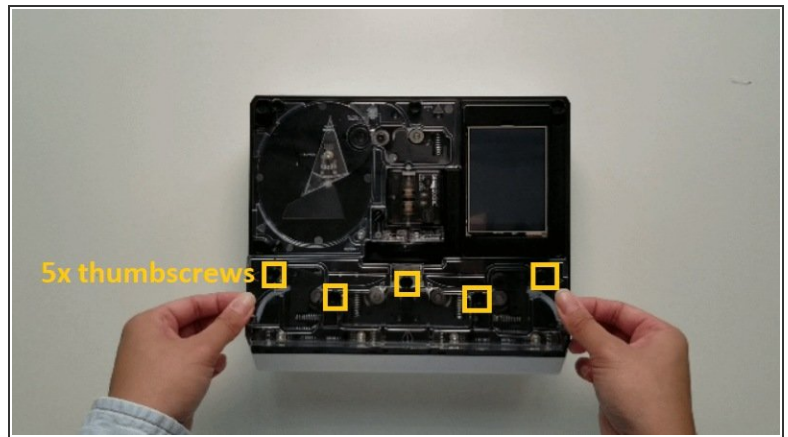
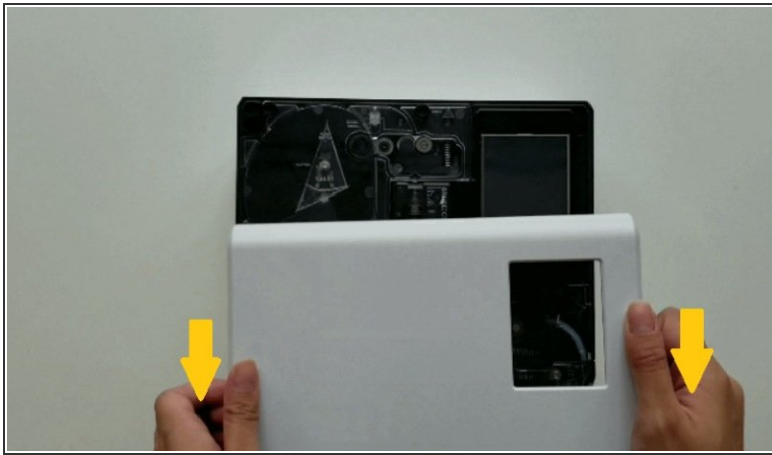
Instructions on how to remove Palette 2's bottom casing for maintenance and repair purposes.

---

### TOOLS:

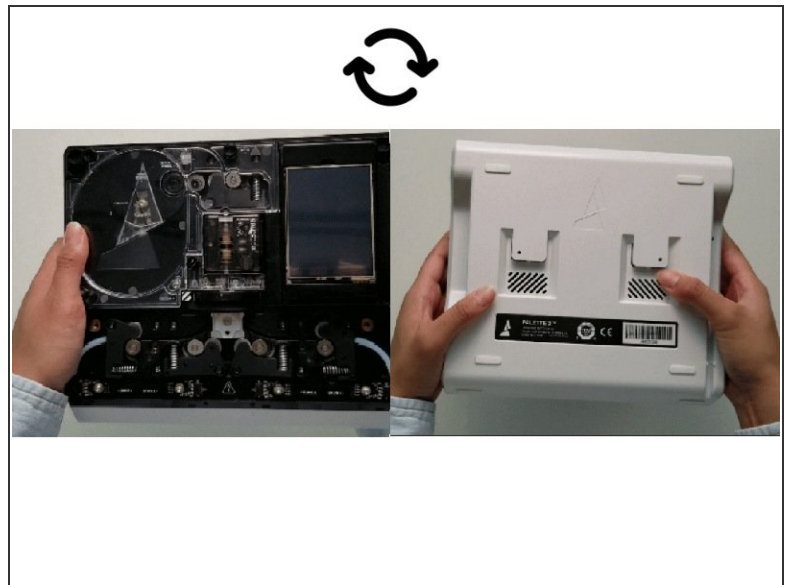
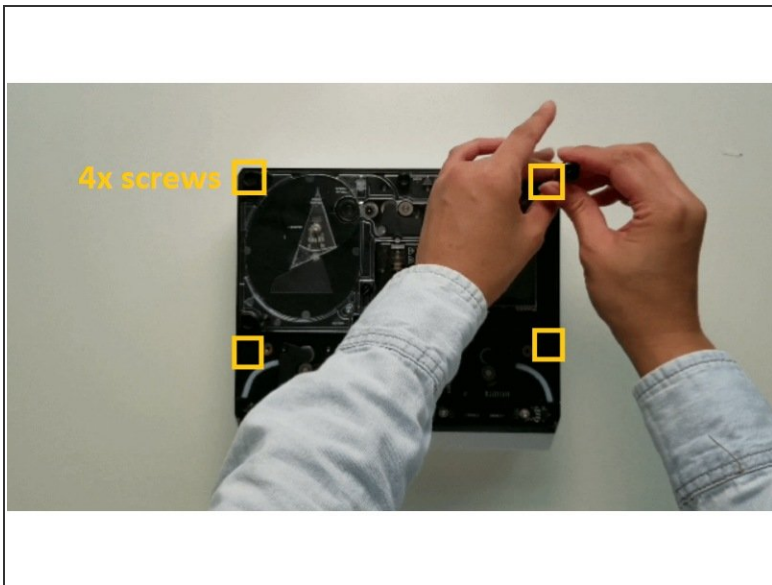
- [Torx Screwdriver](#) (1)
-

## Step 1 — Remove top covers



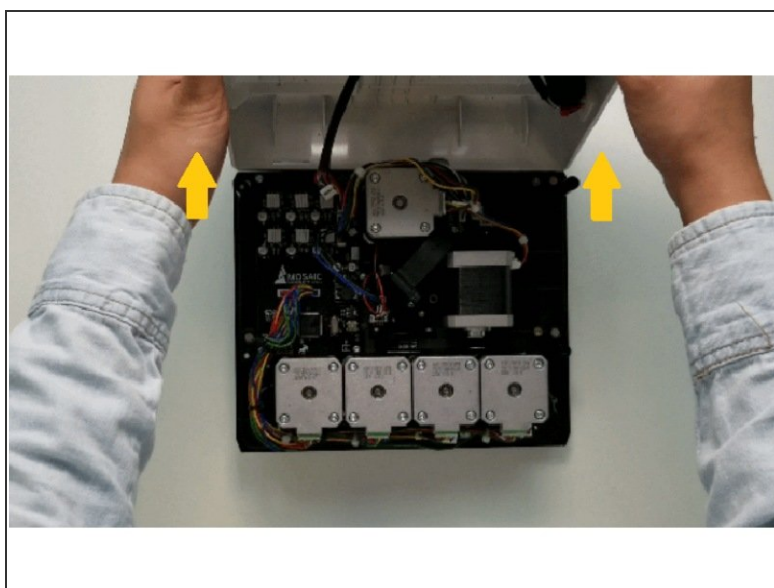
- Turn Palette 2 off and remove the top lid by gently lifting from the sides.
- Remove the ingoing cover by loosening the five thumbscrews counterclockwise.

## Step 2 — Remove Bottom Casing



- Remove the 4 screws holding the bottom casing to the substructure. Two are located at the top two corners of Palette 2 while the other two are under the ingoing cover.
- Once the screws are removed, grip Palette 2 together by the substructure and bottom casing together and flip so that the screen is facing down.

### Step 3 — Removing Wire Bundle



- Please remove the SD card before completing this step as damage may be caused to your unit if left in. The substructure is connected to the bottom casing by a bundle of wires. Slowly and carefully lift the casing from the bottom up while ensuring that the wire bundle is not pulled abruptly.
- To fully detach the bottom casing, unplug from the electronics tray, leaving only the substructure.
- Once the bottom casing is free, you'll have access to replace certain pieces of hardware, including the [electronics tray](#) and the [fan](#).

If you have any additional questions, please send us a message at [support@mosaicmfg.com](mailto:support@mosaicmfg.com).