



Replacing the Encoder

The encoder is important to help calculate the amount of filament fed through Palette 2 and to maintain calibration throughout a print.

Written By: Mosaic Support



INTRODUCTION

With Palette 2's improved hardware, the scroll wheel (encoder) is located within the casing. The encoder is important to help calculate the amount of filament fed through Palette 2 and to maintain calibration throughout a print.



TOOLS:

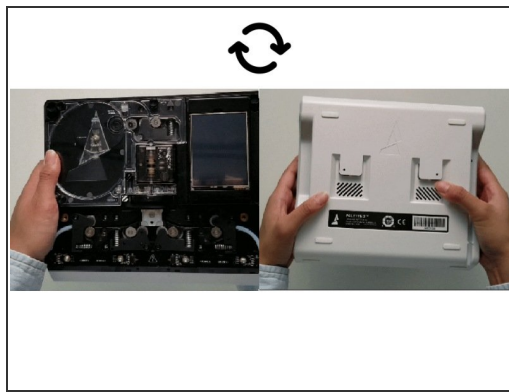
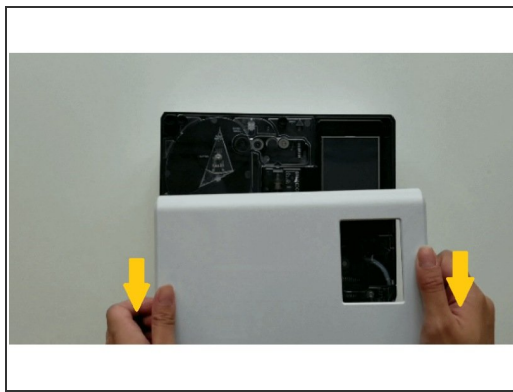
- [Torx Screwdriver](#) (1)



PARTS:

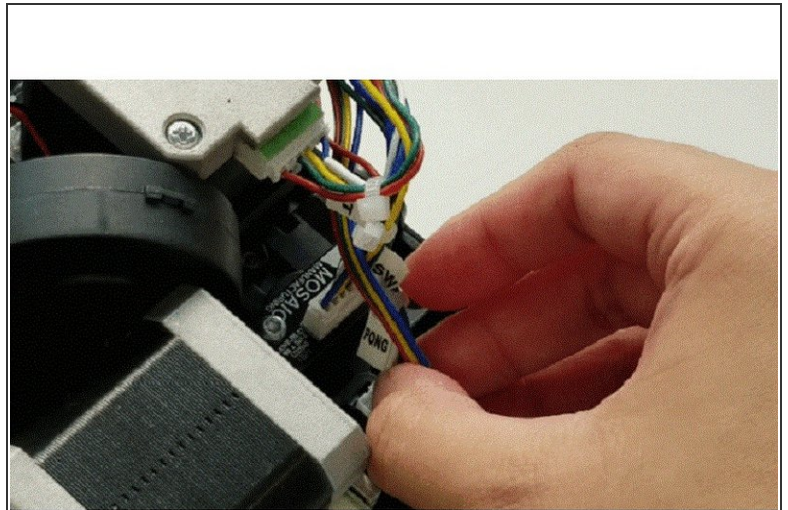
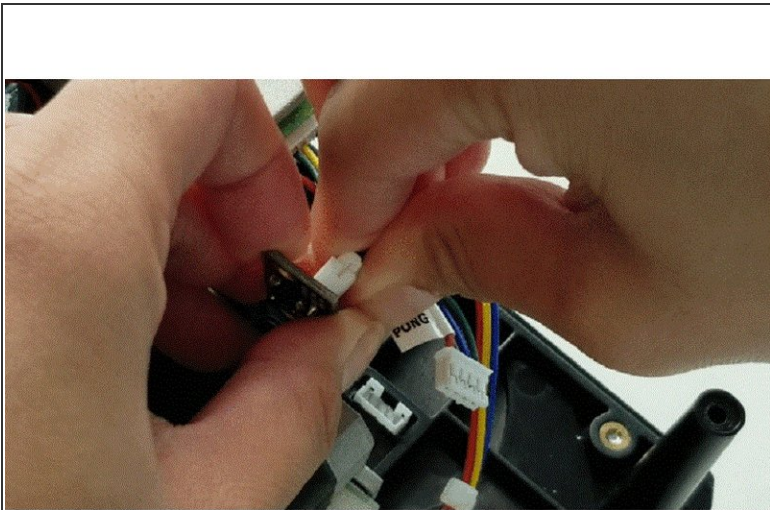
- [Encoder PCB](#) (1)

Step 1 — Remove Bottom Casing



- Turn Palette 2 off and remove the top lid by gently lifting from the sides.
- Remove the acrylic ingoing cover by loosening the five thumbscrews counterclockwise.
- Remove the 4 screws holding the bottom casing to the substructure. Two are located at the top two corners of Palette 2 while the other two are under the ingoing cover.
- Once the screws are removed, grip Palette 2 together by the substructure and bottom casing together and flip so that the screen is facing dow
- Please remove the SD card before completing this step as damage may be caused to your unit if left in. The substructure is connected to the bottom casing by a bundle of wires. Slowly and carefully lift the casing from the bottom up while ensuring that the wire bundle is not pulled abruptly.
- To fully detach the bottom casing, unplug the cluster of wires labeled "Main PCB" from the electronics tray, leaving only the substructure.

Step 2 — Replace Encoder PCB



- Remove the 2 screws holding the encoder and detach the scroll wheel ("SW") and "Pong" wire bundle.
- Replace with new encoder and reattach wiring and bolts.

If you have any additional questions, please send us a message at support@mosaicmfg.com.