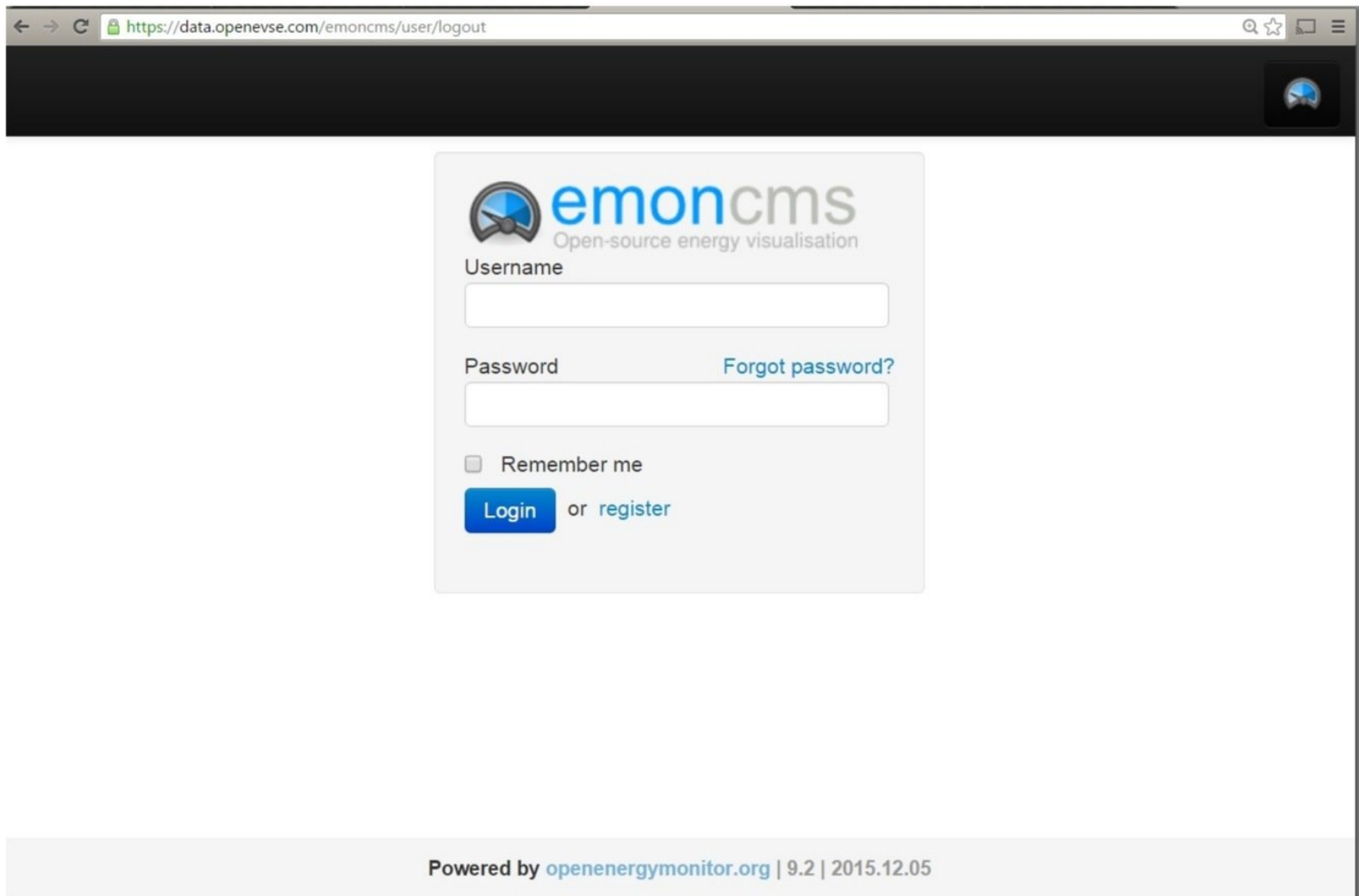


OpenEVSE

Services - EmonCMS

Guide to set up OpenEVSE WiFi and Energy Monitoring

Written By: Christopher Howell



The screenshot shows a web browser window with the URL <https://data.openevse.com/emoncms/user/logout>. The page features the EmonCMS logo, which includes a speedometer icon and the text "emoncms Open-source energy visualisation". Below the logo is a login form with the following elements:

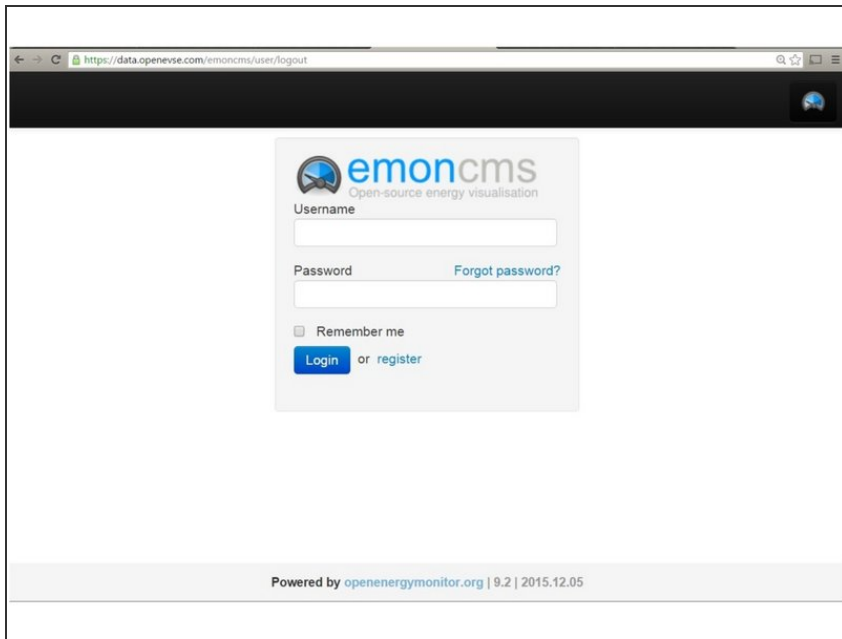
- A "Username" label followed by a text input field.
- A "Password" label followed by a text input field and a blue link for "Forgot password?".
- A checkbox labeled "Remember me".
- A blue "Login" button followed by the text "or register".

At the bottom of the page, there is a footer that reads "Powered by openenergymonitor.org | 9.2 | 2015.12.05".

INTRODUCTION

Outline what you are going to teach someone how to do.

Step 1 — Setup account at OpenEVSE Energy Monitoring site



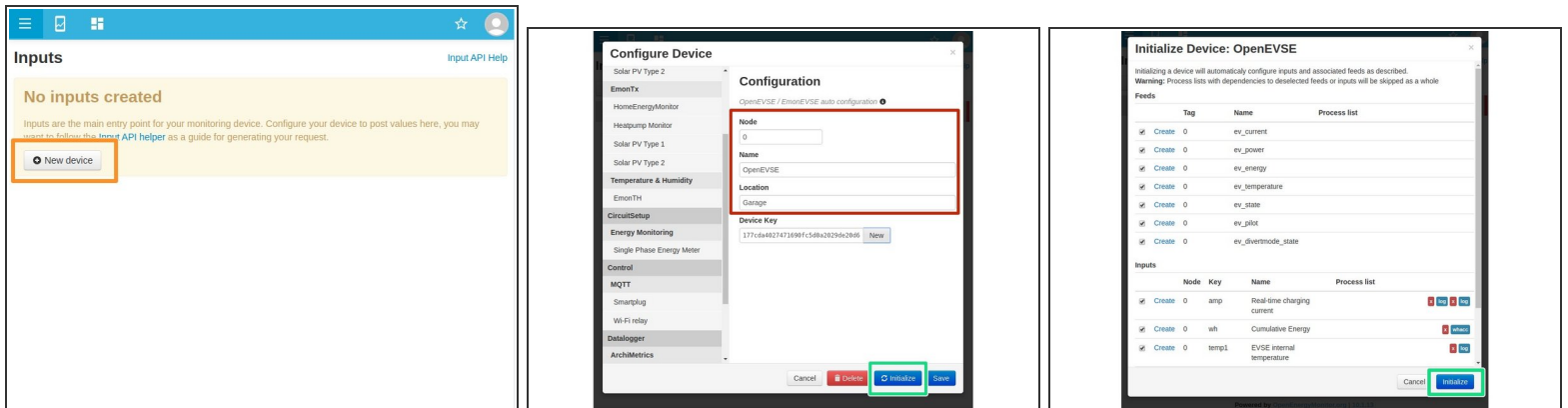
The screenshot shows a web browser window with the URL <https://data.openevse.com/emoncms/user/logout>. The page displays the EmonCMS logo and the text "Open-source energy visualisation". Below the logo is a login form with the following fields and options:

- Username**: A text input field.
- Password**: A text input field with a "Forgot password?" link next to it.
- Remember me
- [Login](#) or [register](#)

At the bottom of the page, it says "Powered by openenergymonitor.org | 9.2 | 2015.12.05".

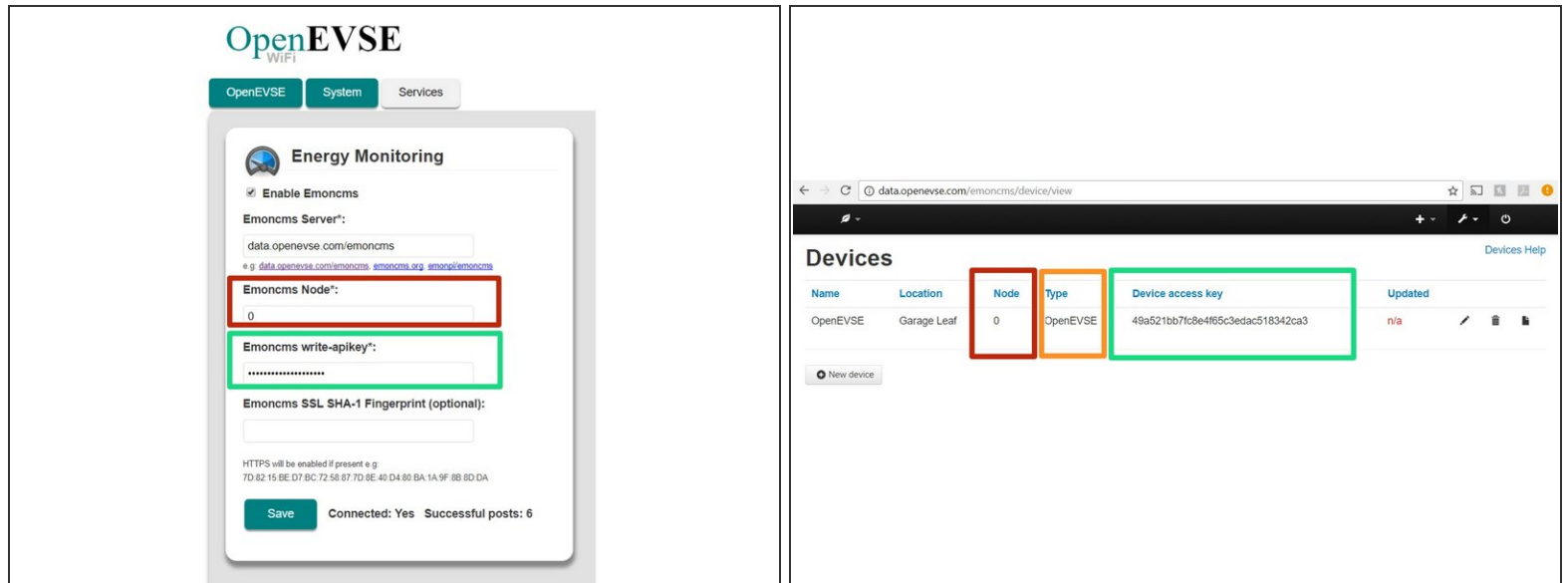
- Setup Free account at: [OpenEVSE Energy Monitoring](#)
- Enter Username, Email and Password to register for an Account.

Step 2 — Setup a Device in EmonCMS



- Click on Inputs
- Select New Device
- ⓘ In devices already exist click the gear icon on an existing device.
 - Enter Node (0 - 32).
 - 📍 This will be used later in the WiFi module.
 - Enter name and location.
 - Select Initialize the Initialize again.
- Click the gear icon click new and copy the device key.

Step 3 — Service - Energy Monitoring



- Login to the OpenEVSE WiFi portal and click on the Services tab.
- Click "Enable EmonCMS" in the services tab.
- Verify the server is set to: data.openevse.com/emoncms
 - Select https:// for the server if available to enable secure mode.
 - Set node (0 - 32) Matching the value chosen in the last step.
 - Paste the Device Key from EmonCMS to write-apikey.
- Click Save

Step 4 — Energy Monitoring -- Inputs

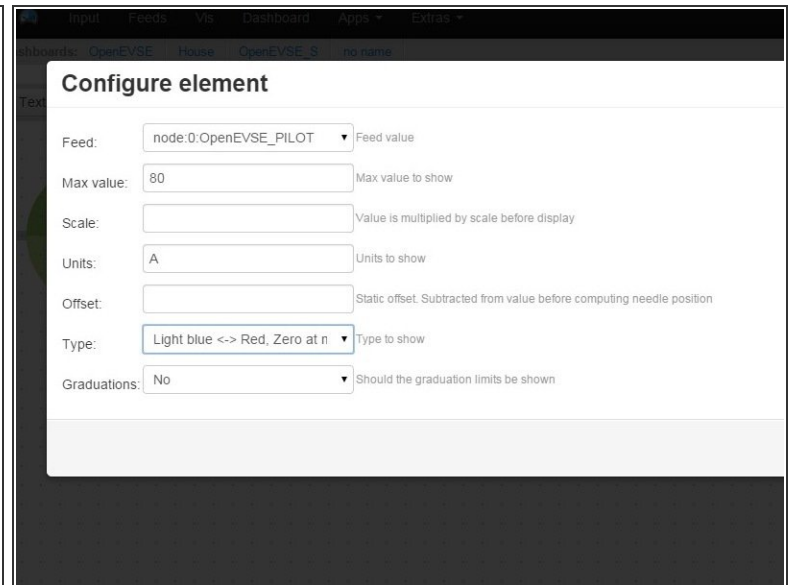
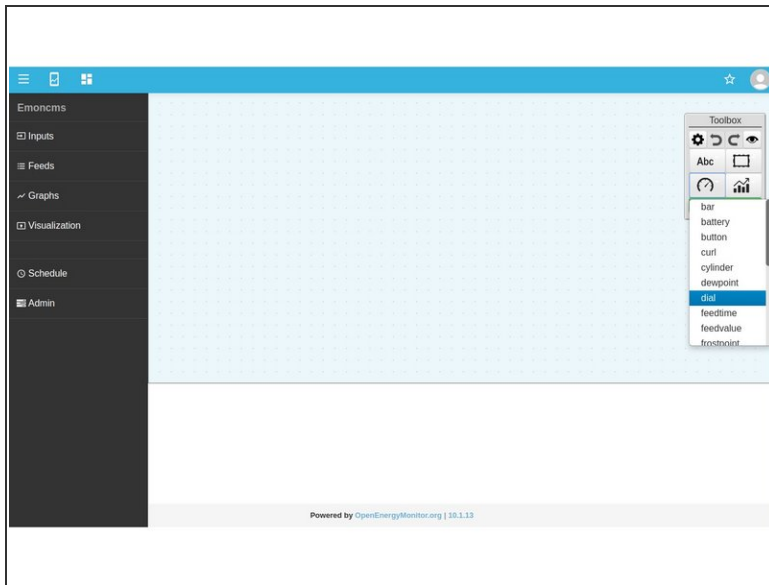
Inputs			
Node 0			
Node	Key	Name	Process list
0	OpenEVSE_AMP		* feed Power to kWh Power to kWh/d Histogram Log to feed
0	OpenEVSE_VOLT		
0	OpenEVSE_TEMP1		Log to feed Max daily value Histogram
0	OpenEVSE_PILOT		Log to feed
0	API_Update		
0	OpenEVSE_TEMP2		
Node 1			
Node	Key	Name	Process list
1	OpenEVSE_AMP		* feed Power to kWh Power to kWh/d Histogram Log to feed
1	OpenEVSE_VOLT		
1	OpenEVSE_TEMP2		* feed Log to feed Max daily value
1	OpenEVSE_PILOT		Log to feed
1	API_Update		
Node 5			
Node	Key	Name	Process list
5	OpenEVSE_AMP		
5	OpenEVSE_VOLT		

- Go back to [OpenEVSE Energy Monitoring](#)
- Select Inputs - Navigate to Setup => Inputs. The Inputs section should now display live data from OpenEVSE.
- ⓘ Inputs from other sensors can be included such as additional current, temperature, humidity, voltage etc. See [Open Energy Project](#)
- 🌟 Inputs displays live data from the sensors. This data is not stored, logged or archived.

Step 5 — Setup Energy Monitoring -- Dashboards

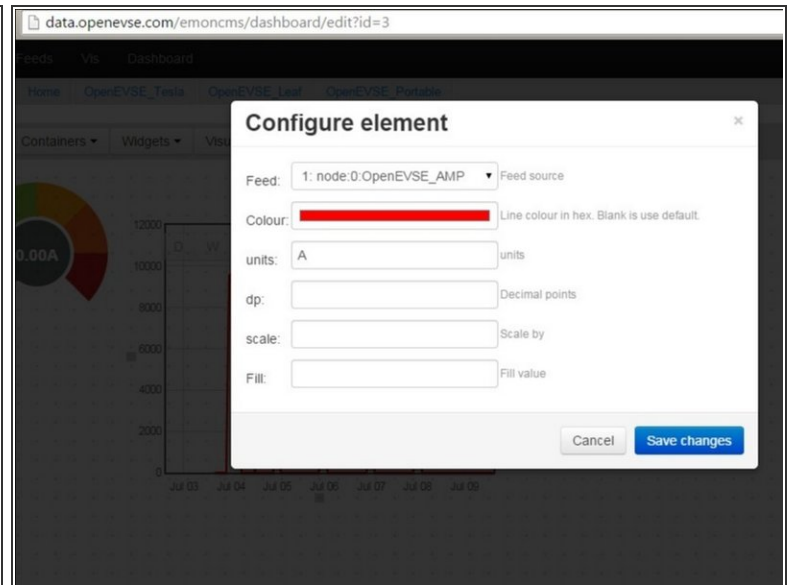
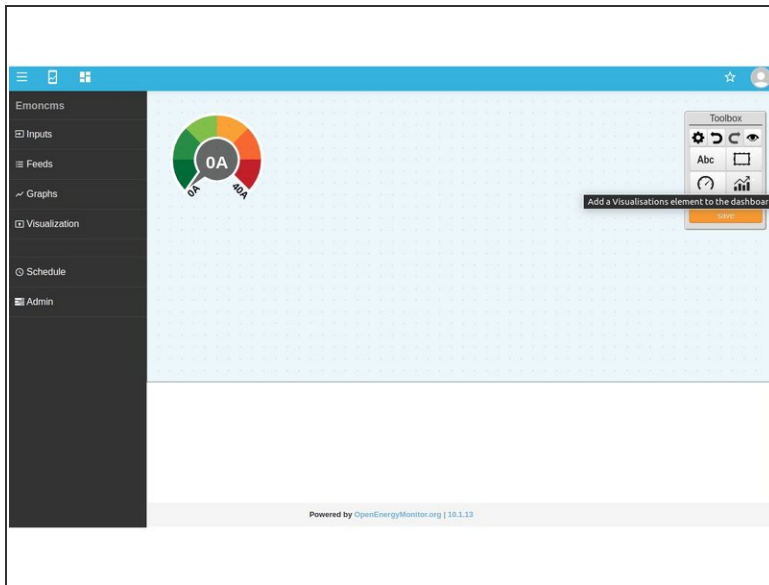
- Dashboards display data logged from the feeds. You can create as many dashboard views as you wish.
- Click on the Dashboard icon and click New + to create your first Dashboard.
- The name can be edited by clicking on the pencil icon.

Step 6 — Setup Dashboard - Dial



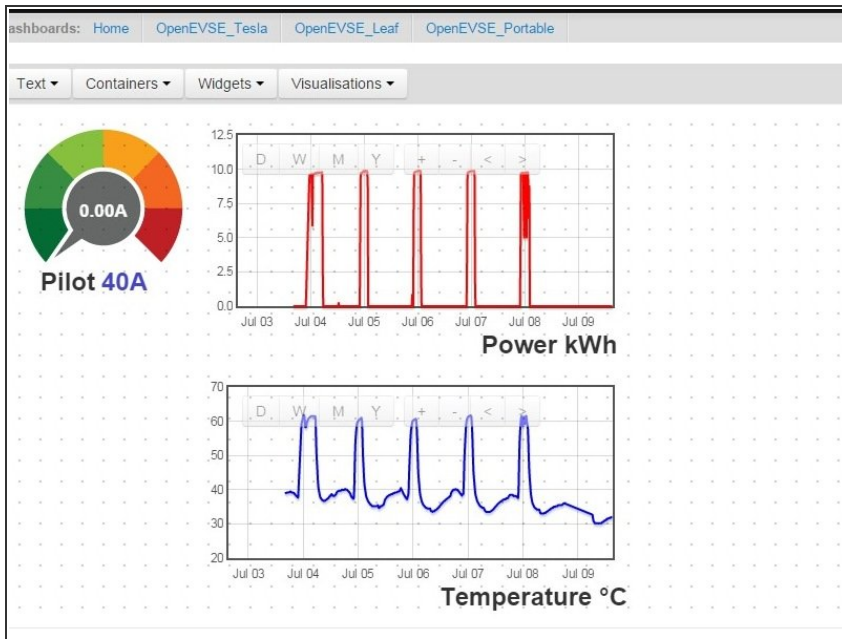
- Select Widgets (Speedometer dial) then select dial.
- Click on grid to place the dial. Move, re-size and adjust as desired.
- Click On the wrench icon to "Configure selected item"
- Select Feed - Set Max Value - Set Units - Pick Type

Step 7 — Setup Dashboard - Rawdata



- Add Rawdata charts for current and temprature. Click on Bargraph icon Visualizations then Rawdata. Click on the grid to add.
 - Click Wrench Icon to Configure selected item.
- Select Feed, Color and Units
- Move and scale as desired.
- Save Changes

Step 8 — Setup Dashboard - Add text and Feed Values



- Add Text Labels
- Feed values can be displayed. Click Widget > Feedvalue