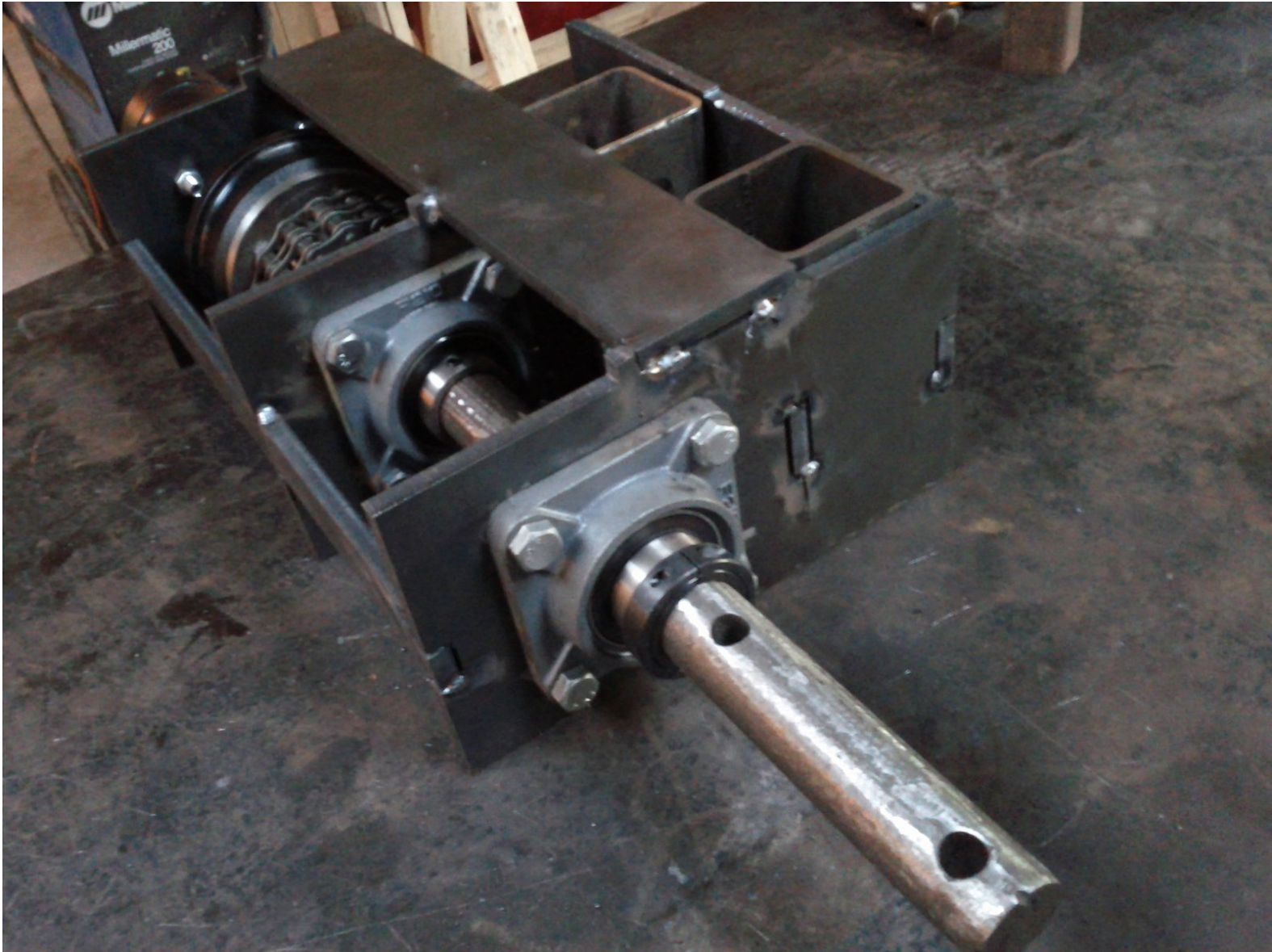




How to build the Trencher Rotor Module

Written By: Chris Reinhart



Step 1 — How to build the Trencher Rotor Module



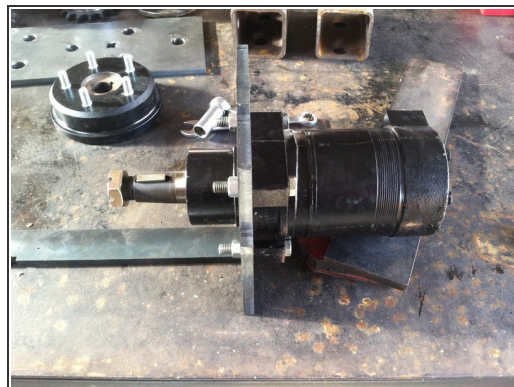
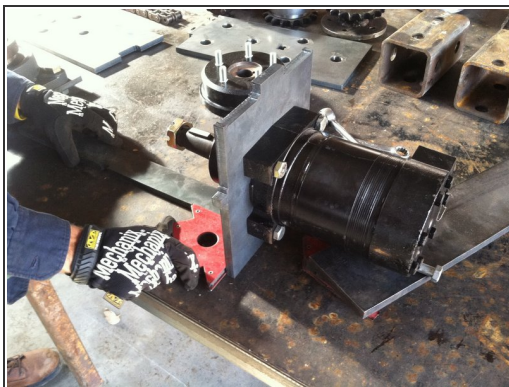
- Attach bearing to "middle plate" (insert part number) as shown in image.
- Be mindful of orientation of grease zerk relative to plate. Must remain accessible once unit is fully assembled.

Step 2



- Attach bearing to "large bearing plate" (insert part number). This bearing faces inside the mount - towards the other bearing.

Step 3



- Attach motor to plate. (insert part number)

Step 4



- Place hub. Insert nut and pin to hold in place.

Step 5



- Info about the hub to plate or something
- Should this be earlier?

Step 6



- Place hub-to-chain-link coupler.
- Tighten nuts in a star pattern.

Step 7



- Cut 3" shaft with bandsaw
- Mill hole

Step 8



- Mill slot in shaft

Step 9



- Feed shaft through bearings and lock colars

Step 10



- Step 10

Step 11



- Step 11

Step 12



- Insert wisdom here.

Step 13



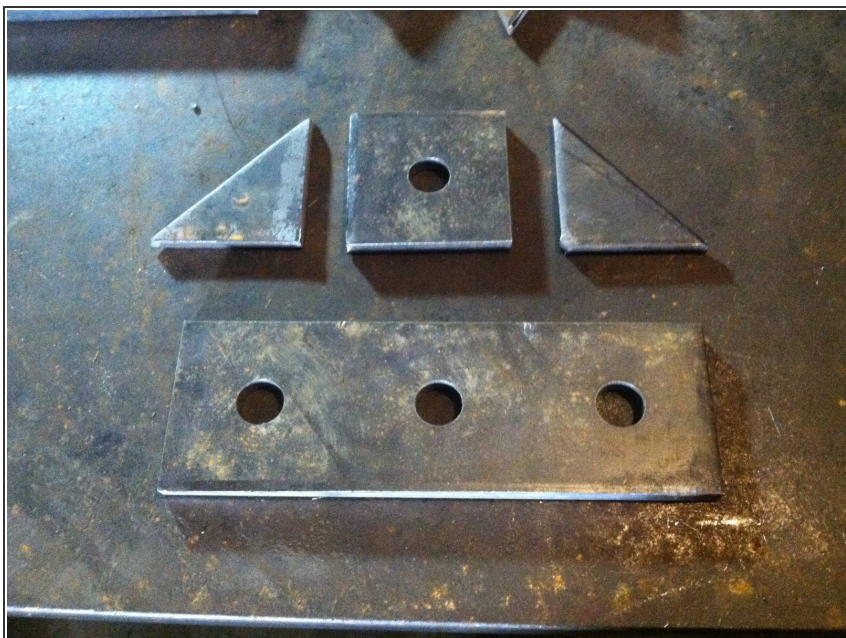
- Ensure all parts are square and uniform
- Tack weld
- Make sure rotor turns freely without binding
- Finish welding entire unit

Step 14



- Insert wisdom here.

Step 15



- Insert wisdom here.

Step 16



- With the rotor and double chin coupler assembly put on the two bearings but place the key and the shaft first to join the shaft and the motor assembly put on the two bearings but place the key and the shaft first to join the shaft and the motor assembly.

Step 17



- Use the clamp to hold the key in place as a rubber mallet is used to punch the shaft

Step 18



- Loosen the setscrew on the collar to allow the key to go in. It's a three-quarter inch key.

Step 19



- Punch the shaft all the way in and tighten down the set screw for the key.

Step 20



- Grind down key if the key doesn't fit.

Step 21



- Use the top plate as a marker for punching in the shaft into the Universal Rotor Assembly - to adjust the distance of how far the have to go in

Step 22



- Put in the square tube spacers. Put in shims - about 1/32 by the front plate, and about 1/8" on the back shim.

Step 23



- Make sure bottom plate is in place. Square up the entire structure.

Step 24



- Tack the entire assembly.

Step 25



- The motor mount plate has the nub on the opposite side of the case drain

Step 26



- Insert wisdom here.

Step 27



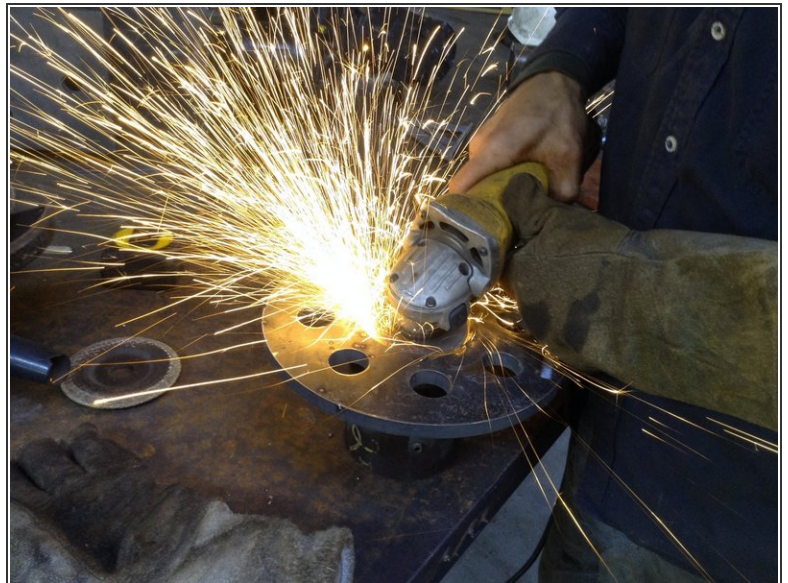
- Insert wisdom here.

Step 28



- Insert wisdom here.

Step 29



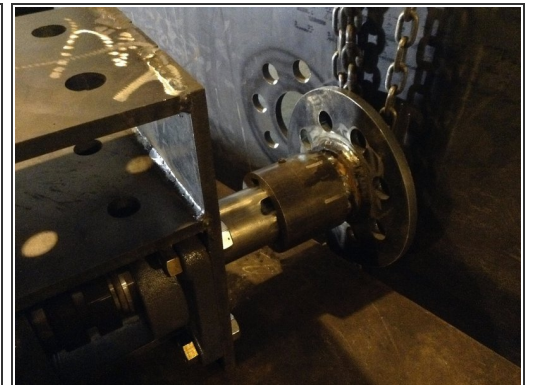
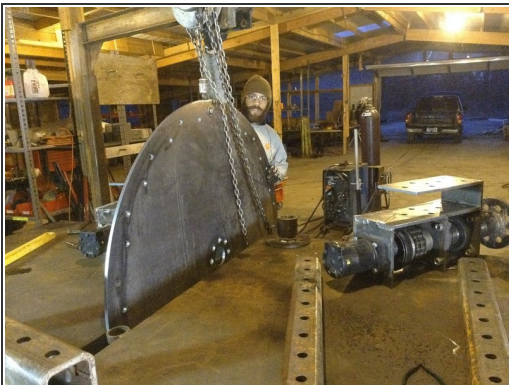
- Insert wisdom here.

Step 30



- Insert wisdom here.

Step 31



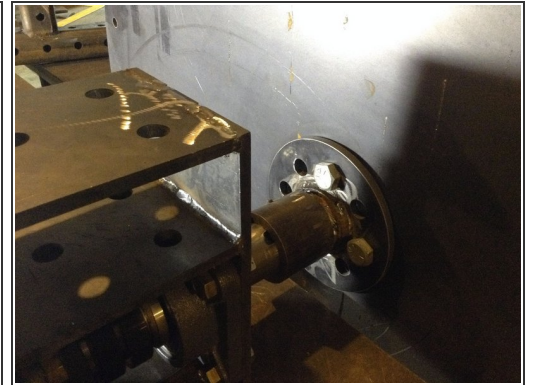
- Insert wisdom here.

Step 32



- Insert wisdom here.

Step 33



- Insert wisdom here.

Step 34



- Insert wisdom here.

Step 35



- Use shaft to align both hubs prior to tightening hubs to plate.

Step 36



- Insert Key stock in Shaft