



How to Module - X Carriage Assembly

Written By: Robert Kirk



**TOOLS:**

- [2.5mm Allen Driver](#) (1)

**PARTS:**

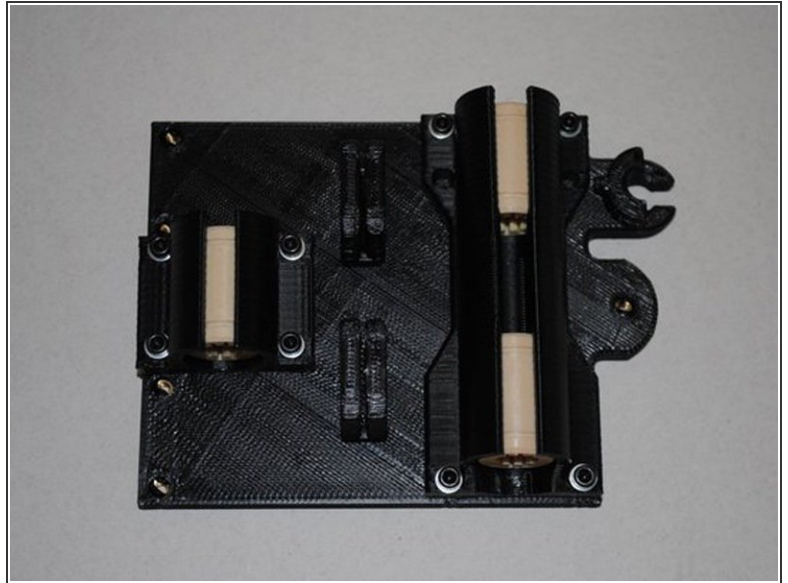
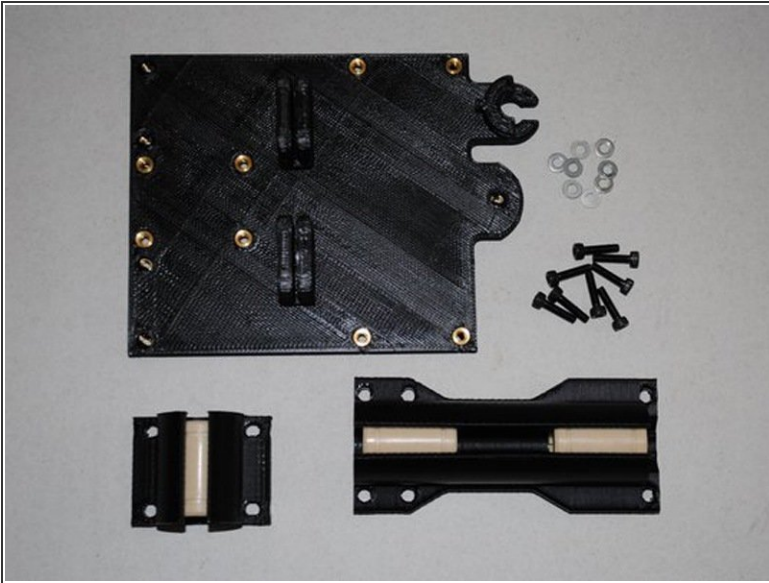
- [X carriage with inserts](#) (1)
- [X carriage guide](#) (1)
- [Double bearing holder with bearings](#) (1)
- [Single bearing holder](#) (1)
- [M3 x 12 SHCS](#) (1)
- [M3 Washer](#) (1)

Step 1 — X Carriage Assembly



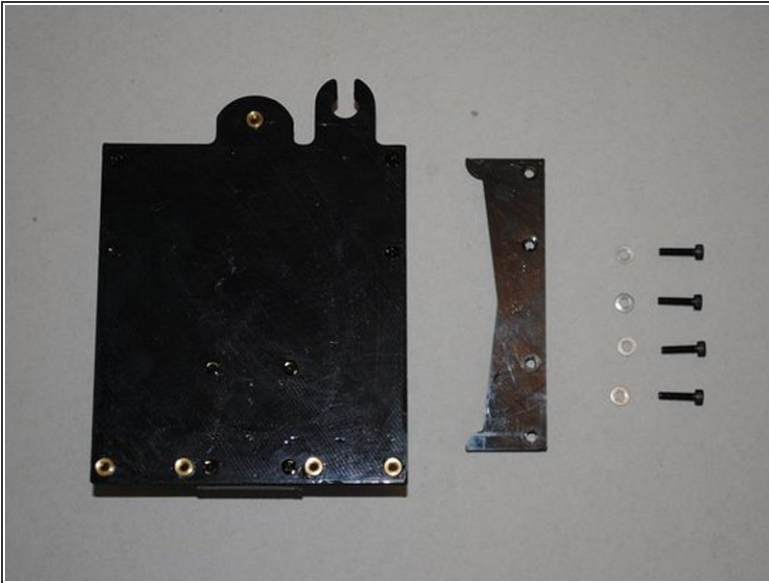
- GATHER PART AND TOOLS FOR X CARRIAGE ASSEMBLY
- Photo 1 - 2.5mm Allen Driver

Step 2



- INSTALL BEARING HOLDERS
- Install the double bearing holder and single bearing holder using M3 x 12 SHCS and M3 Washers.
- Take note of the double bearing holder orientation.
- The end with the step must be in the correct location.
- Do not tighten the screws all the way down. The bearings will be adjusted later and must wiggle at this step.
- Photo 1 - Bearing holders and parts
- Photo 2 - Bearing holders assembled

Step 3



- INSTALL X CARRIAGE GUIDE
- Using 4x M3 x 12 SHCS and M3 Washers. Install the X carriage guide as shown.
- Tighten bolts all the way down.
- Verify Assembly is complete.
- Photo 1 - X Carriage guide with parts
- Photo 2 - X Carriage guide installed