



# Installing Module - Electronics Case Assembly

Written By: Robert Kirk





## TOOLS:

- [2.5mm Allen Driver](#) (1)



## PARTS:

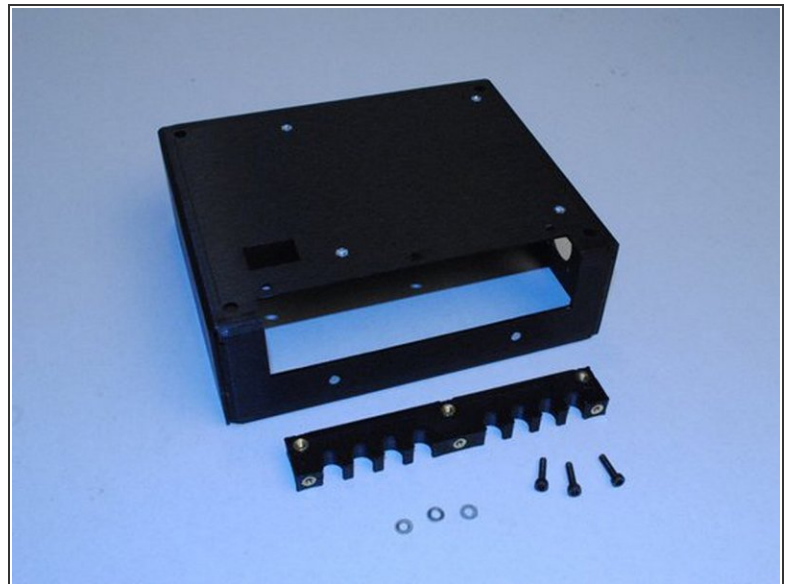
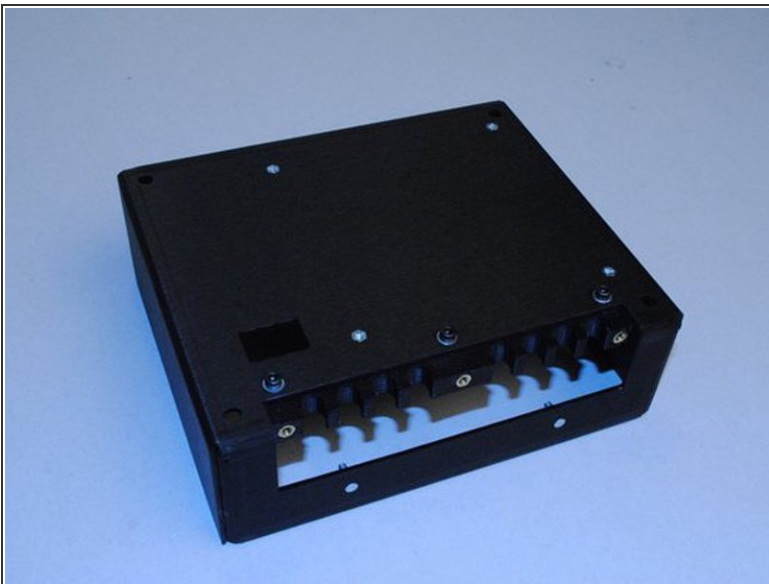
- [Electronics Case](#) (1)
- [RAMBo 1.1b board](#) (1)
- [Inner strain relief with inserts](#) (1)
- [M3 x 12 SHCS](#) (3)
- [M3 x 5 SHCS](#) (4)
- [M3 Washer](#) (3)

## Step 1 — Installing Module - Electronics Case Assembly



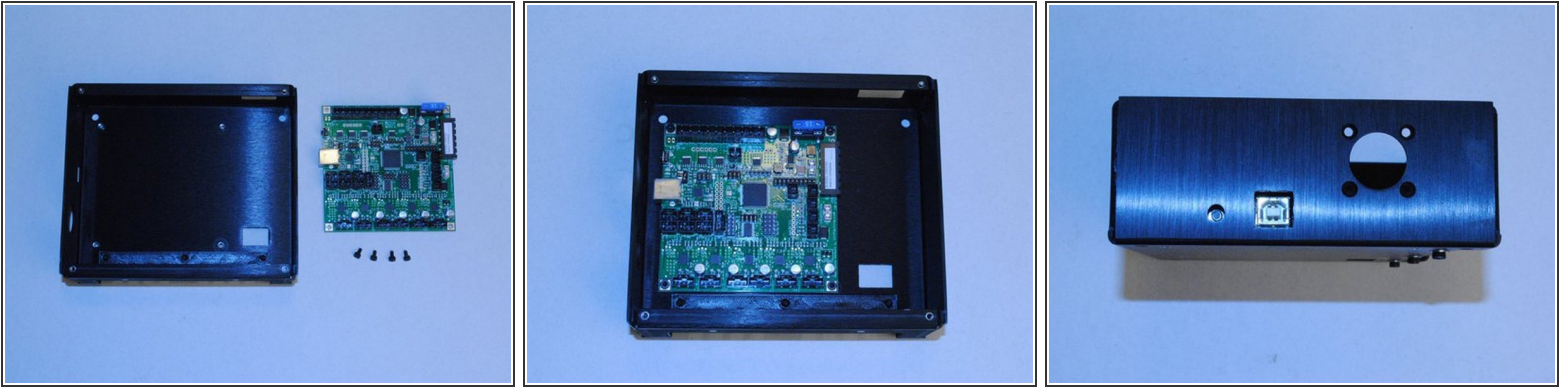
- GATHER PARTS AND TOOLS TO BUILD THE ELECTRONICS CASE ASSEMBLY
- 2.5mm Allen Driver
- Electronics case RAMBo 1.1b board  
Inner strain relief with inserts M3 x 12 SHCS M3 x 5 SHCS M3 washer

## Step 2



- INSTALL THE INNER STRAIN RELIEF
- Install the Inner strain relief using 3x M3 x 12 SHCS and M3 washers.

## Step 3



- INSTALL THE RAMBO BOARD
- Using 4x M3 x 5 SHCS, install the RAMBo board into the electronics case.
- Make sure the USB plug lines up with the hole in the case.
- Does the USB plug line up with the case?