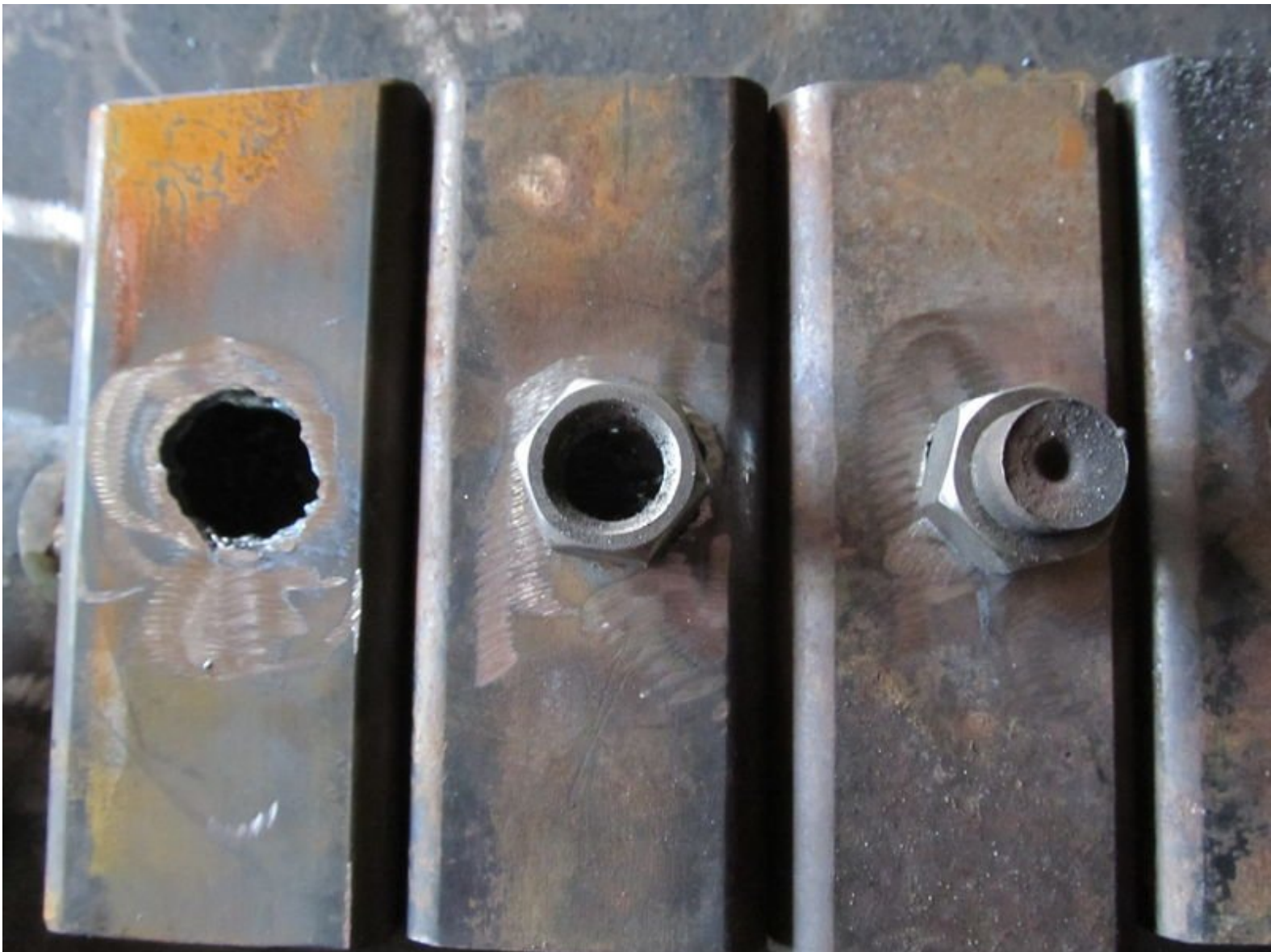




CEB Leg Holders

Make versatile leg holders compatible with many Open Source Ecology machines.

Written By: Dozuki System



INTRODUCTION

We suggest you prepare all leg holders at once, doing each step for all leg holders before moving on.

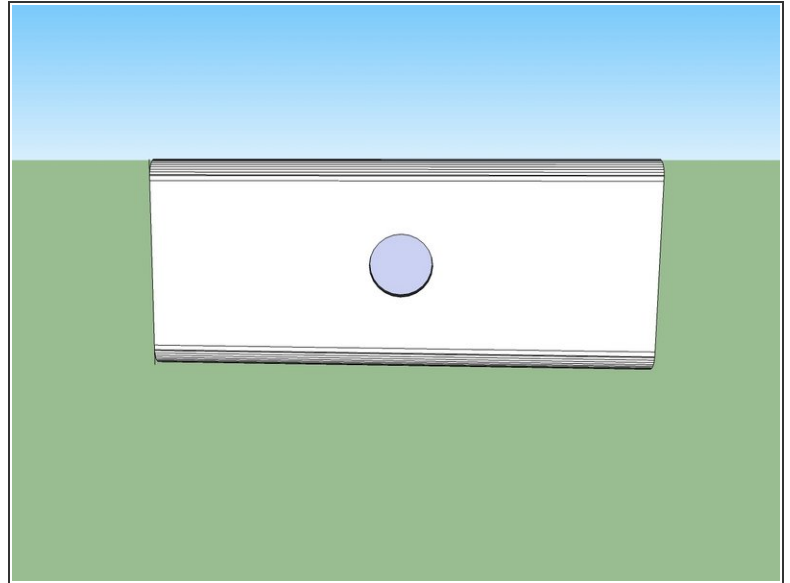
TOOLS:

- torch (1)
- Welder (1)

PARTS:

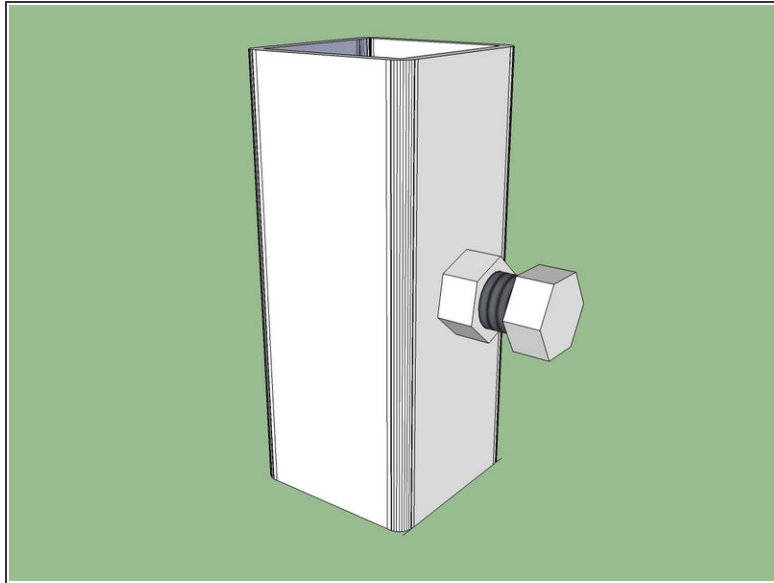
- Steel tubing (1)
2.5" x 2.5" x 3/16" wall, 6" cut
1 for each leg holder
- Nut (1)
steel, 3/4"
1 for each leg holder
- Bolt (1)
3/4", 1 1/2" long
1 for each leg holder

Step 1 — CEB Leg Holders



- You will need 14 Leg Holders for the CEB. 12 will be used in this step. Save the remaining ones for later. Make all leg holders at once to save time.
- Torch a 3/4" hole in the center of one of the faces of the tubing; make sure it's large enough for a 3/4" bolt.
- It's not crucial that the hole be centered. It just needs to be somewhere close to the center.

Step 2



- Weld the nut over the hole, ensuring the nut is level, and the hole is clear.
- ⓘ Make sure no spatter goes into the threads by covering the top of the nut.
- Thread the bolt onto the nut.