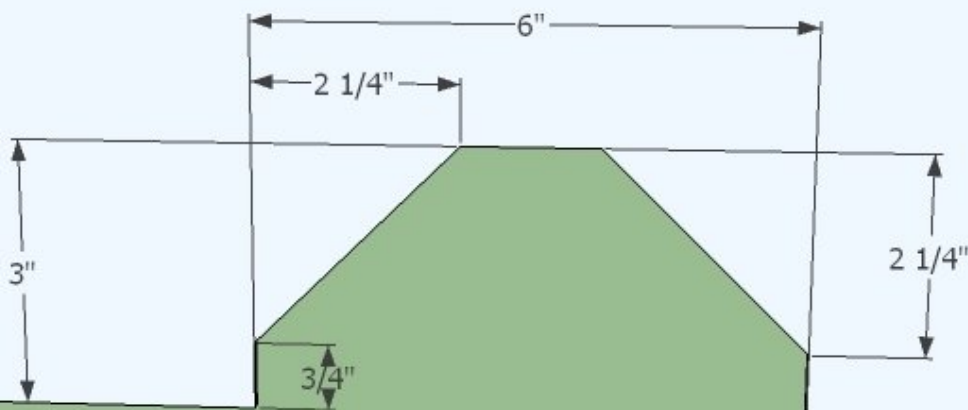




CEB Shaker Mount

This guide will show how to build the mount which attaches the shaker motor and hammer to the hopper supports.

Written By: Dozuki System



INTRODUCTION

[Sketchup Model](#)



TOOLS:

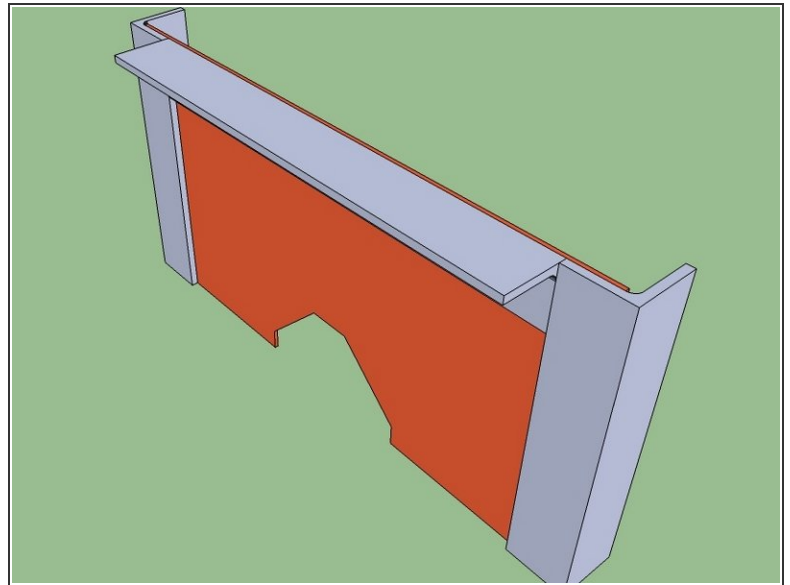
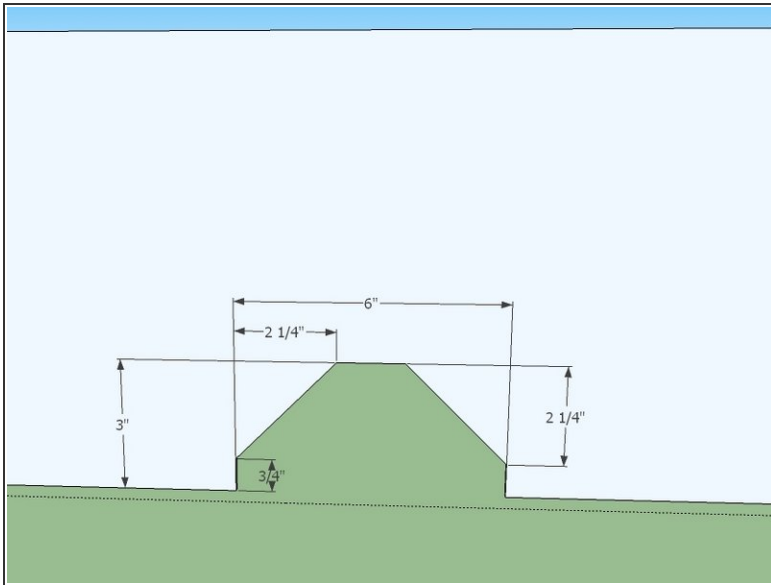
- [Angle grinder](#) (1)
- [hole puncher](#) (1)
- [torch](#) (1)
- [Welder](#) (1)



PARTS:

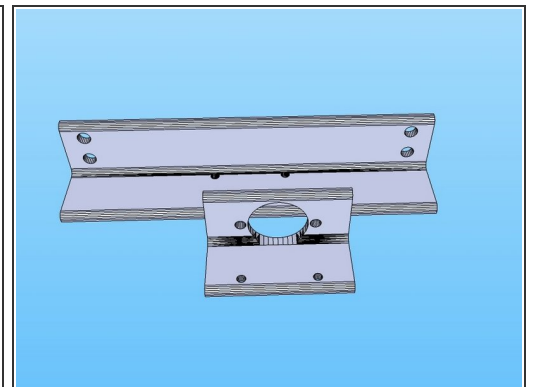
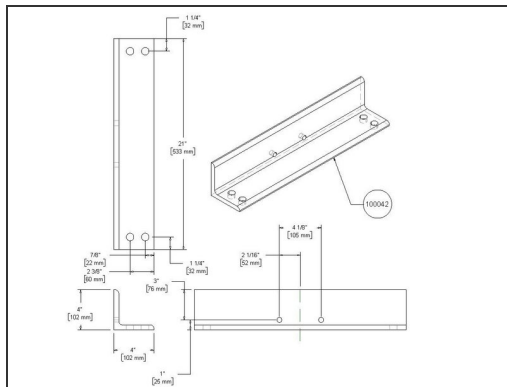
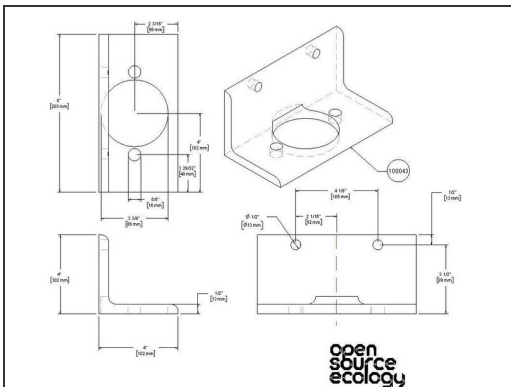
- [4"x4"x1/2" Angle Steel](#) (1)
8"
Motor attachment
- [4"x4"x1/2" Angle Steel](#) (1)
21"
Hopper Attachment
- [2"x2"x1/4" Angle Steel](#) (2)
16"
Guard top and bottom
- [2"x2"x1/4" Angle Steel](#) (2)
10"
Guard sides
- [1" rebar](#) (2)
7"
Braces
- [1/8" Sheet Steel](#) (1)
10"x19"
guard

Step 1 — Make the guard



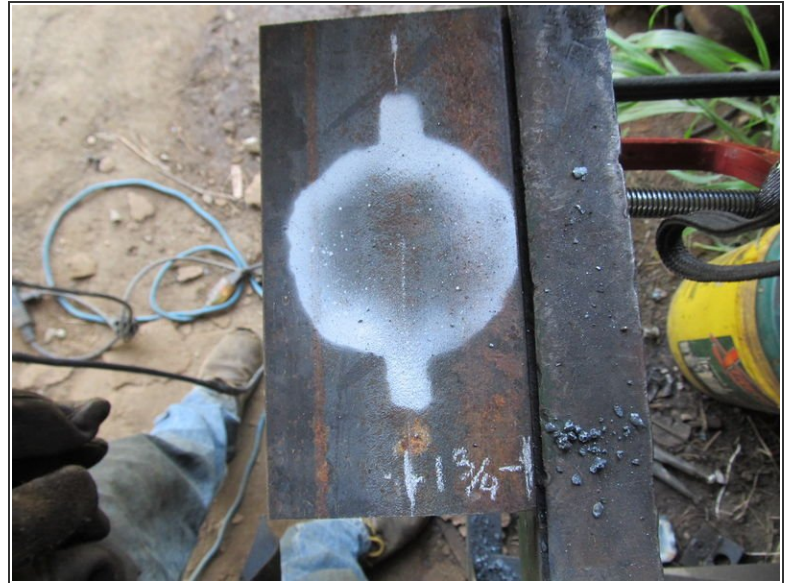
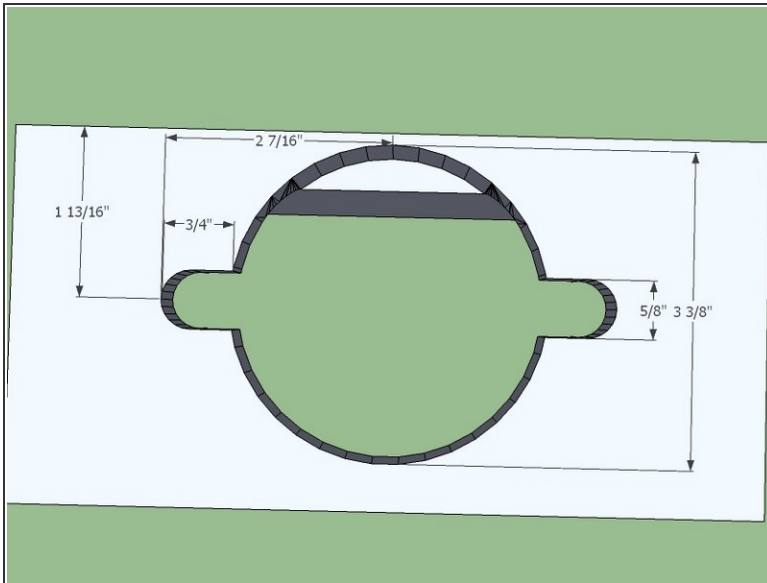
- Torch the guard sheet metal as in the image. It doesn't need to be exact.
 - Note: the shape shown is centered.
- Weld the top and side 2x2 angle pieces to it as shown.

Step 2 — Punch the holes in the 4x4 angle



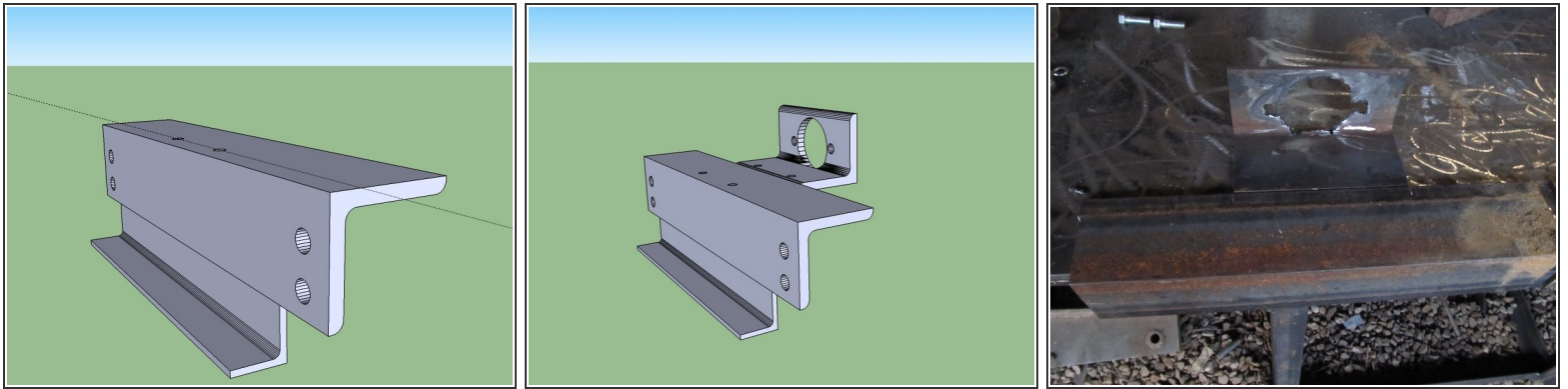
- Not all holes will be accessible with a punch. Torch the rest.

Step 3 — Torch the Remaining Holes



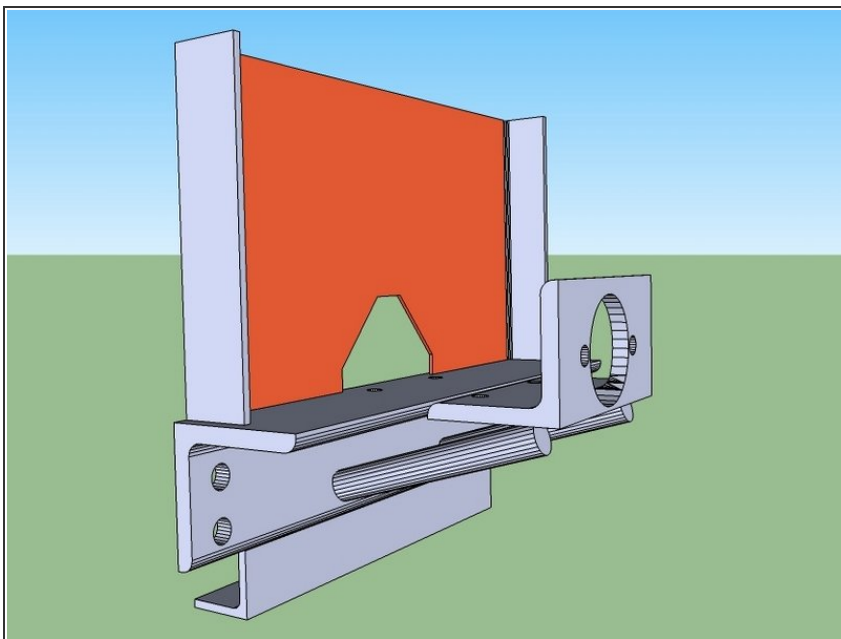
- Torch the hole for mounting the motor in the 8" piece of 4x4 angle. Grind off the slag.
- Double check that the hole is large enough by putting on the motor and making sure the raised portion in the center goes all the way thru.
- You can torch separate holes for the bolts, or do one large, odd shaped one like is pictured.
- Torch whichever holes you couldn't access with the punch

Step 4 — Weld it together



- Weld the bottom 2x2 to the 21" 4x4.
- Weld the two 4x4 angle pieces together as pictured, ensuring they are perfectly flush and square.
 - Skip around while welding so it doesn't warp one way or another.
- Grind off the top weld linking the 4x4's so the bearing will be able to sit flush on it
- Also grind off near the bolt holes on the bottom.

Step 5



- Weld the rebar onto the underside of the mount.
- Weld the guard to the top side of the mount.