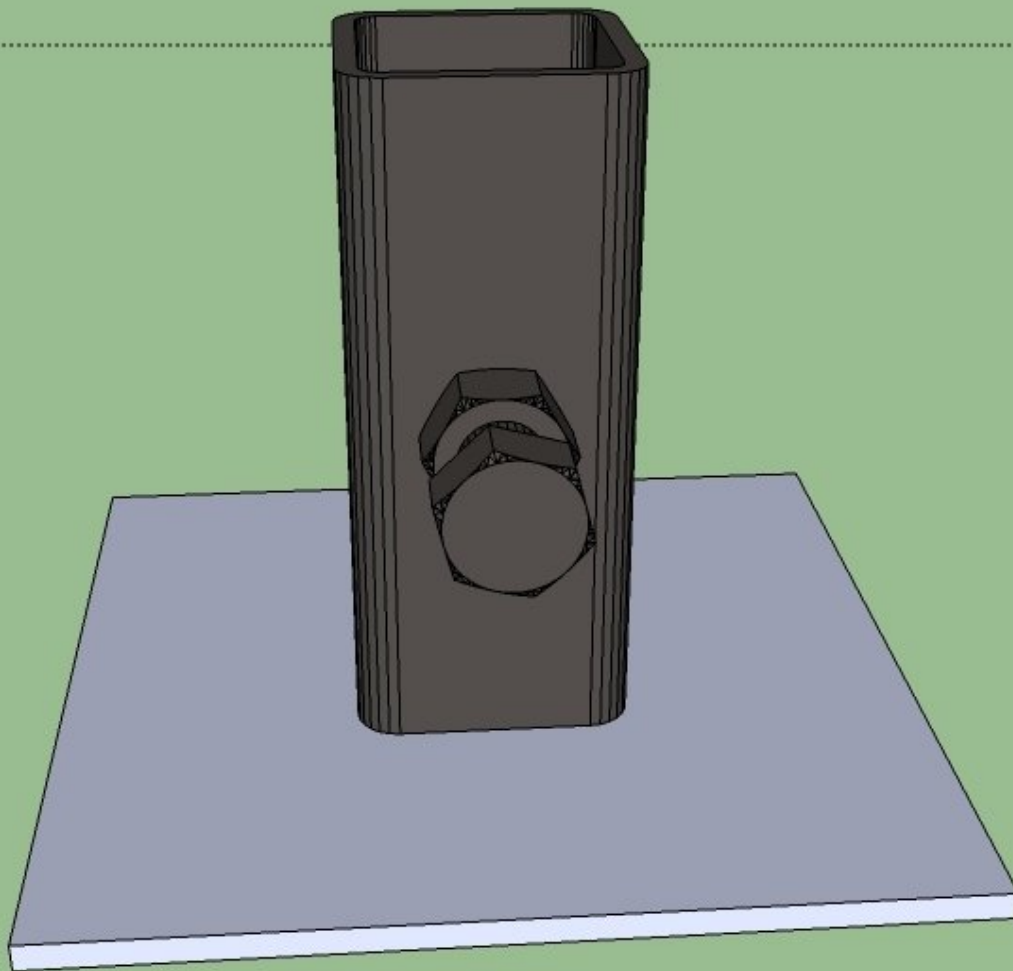




CEB Support System

This page tells how to prepare the components which make up the support system.

Written By: Dozuki System



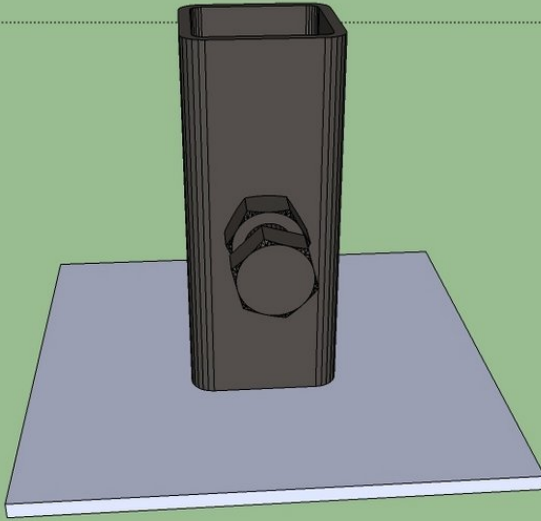
INTRODUCTION

This guide explains the steps for:* Leg Holders- [Model](#)* Feet- [Model](#)* Legs- [Model](#)* Secondary Arms- [Model](#)* Primary Arms- [Left Primary Arm Model](#), [Right Primary Arm Model](#)Additional Materials Required:* 3/4" Steel Nuts (14)* 3/4"x1.5" Bolts (14)

TOOLS:

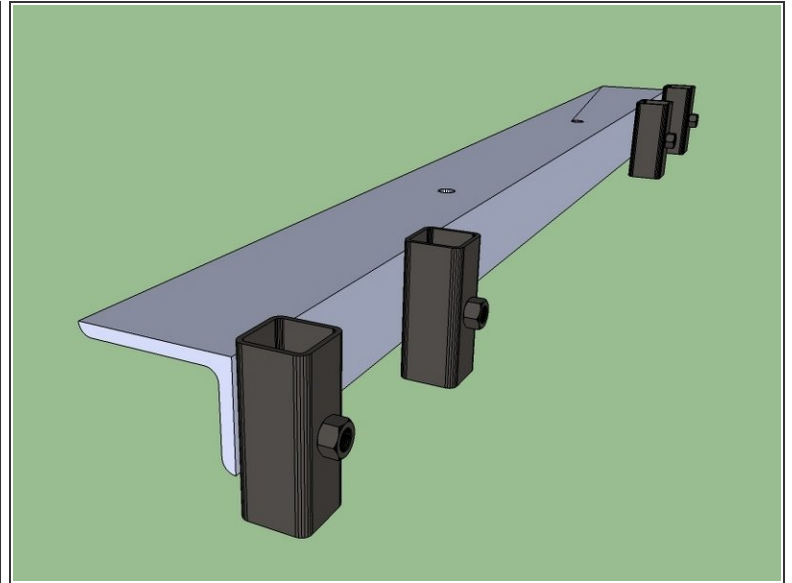
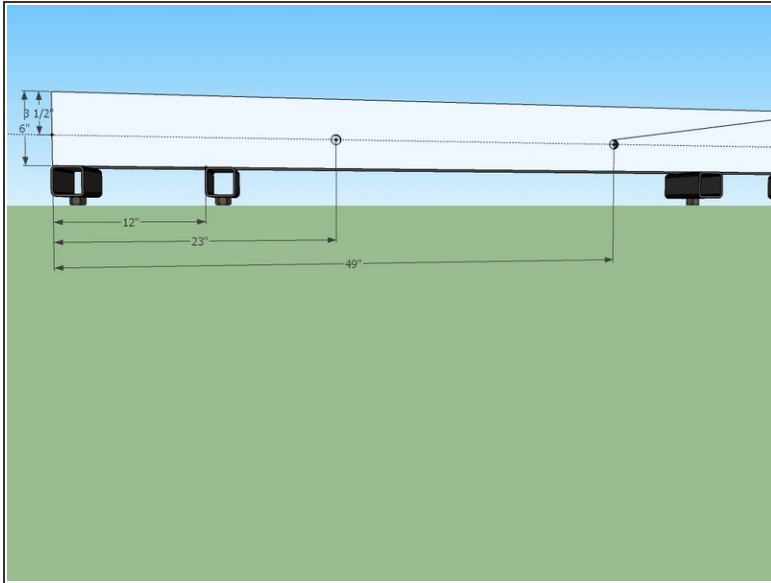
- [Angle grinder](#) (1)
 - [hole puncher](#) (1)
 - [Speed Square](#) (1)
 - [torch](#) (1)
 - [Welder](#) (1)
-

Step 1 — Make the feet



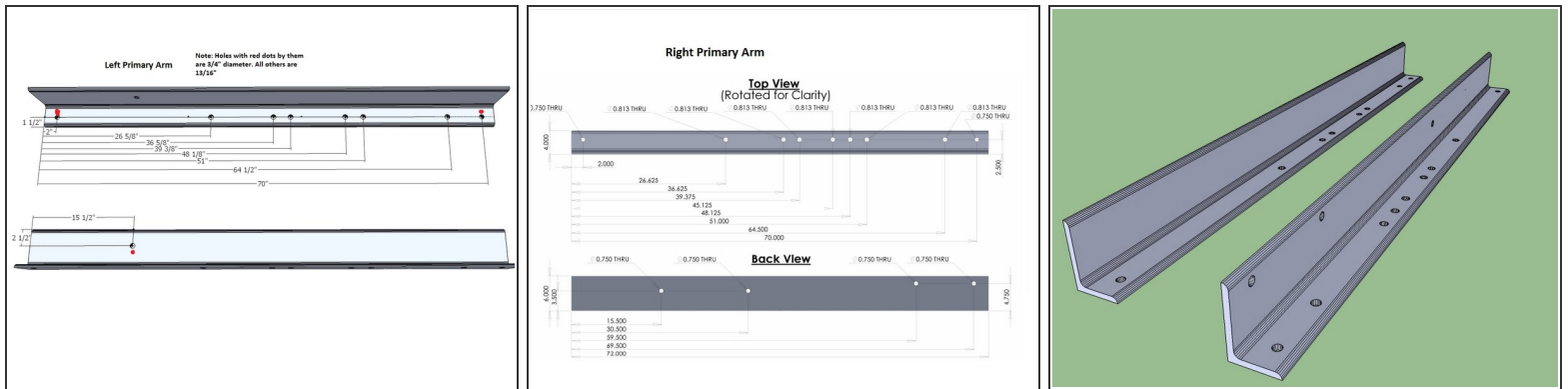
- You need to make 4 of these.
- Center a leg holder on the 1/4x8x8 plate, ensuring it is square in all directions.
- Weld it 100% to the plate.

Step 2 — Make the Secondary Arms



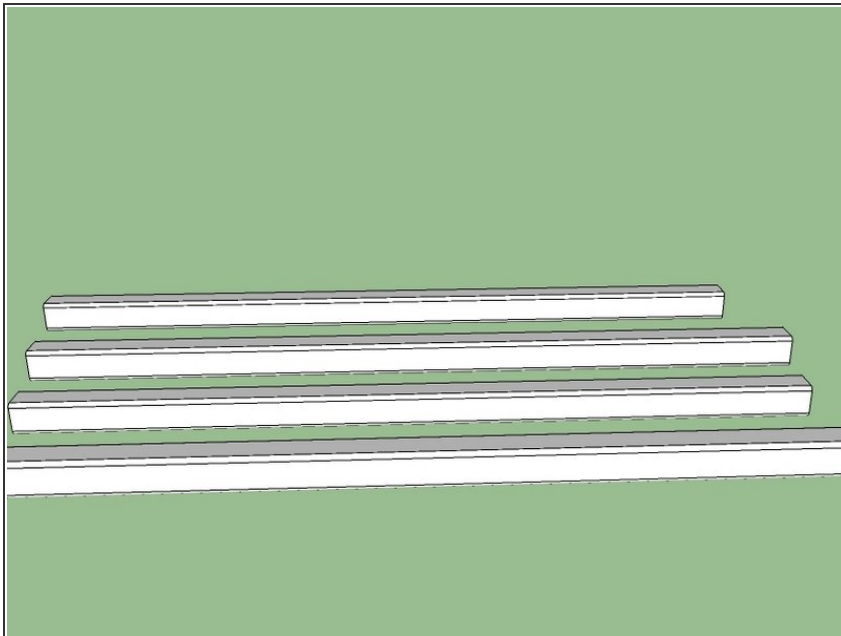
- You need two and they are exactly the same.
- Punch the 3/4" holes
- Place the leg holders in their proper locations.
 - They go on the 4" side of the angle.
 - Make sure they are square with the angle iron and centered vertically.
- Weld them to the angle.

Step 3 — Make the primary arms



- Mark all holes
- Punch all holes.
- Label each arm with either "right" or "left"

Step 4 — Legs



- There are no steps for the legs, just cut them.