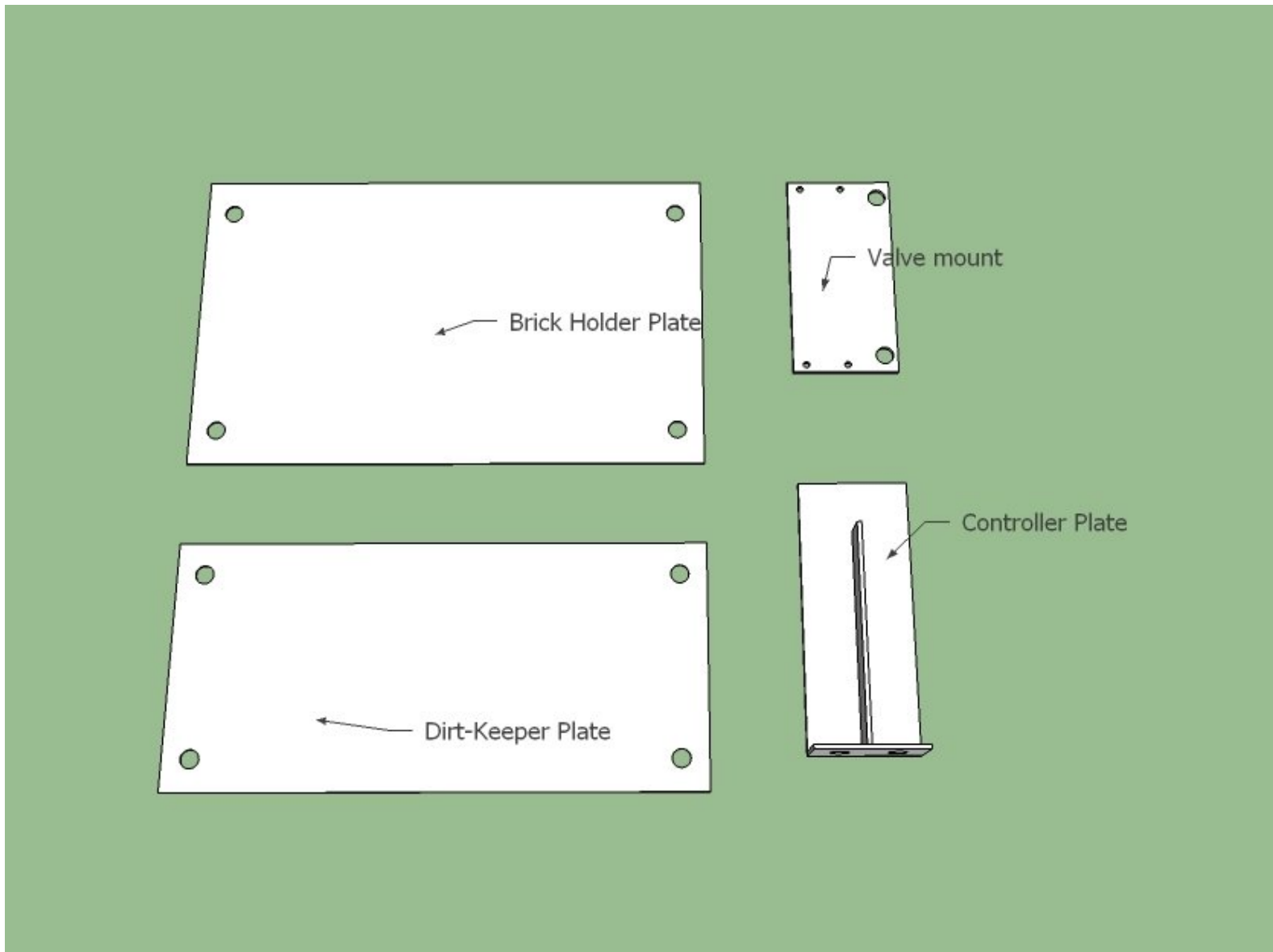




CEB Simple Plates

Give a short summary.

Written By: Dozuki System



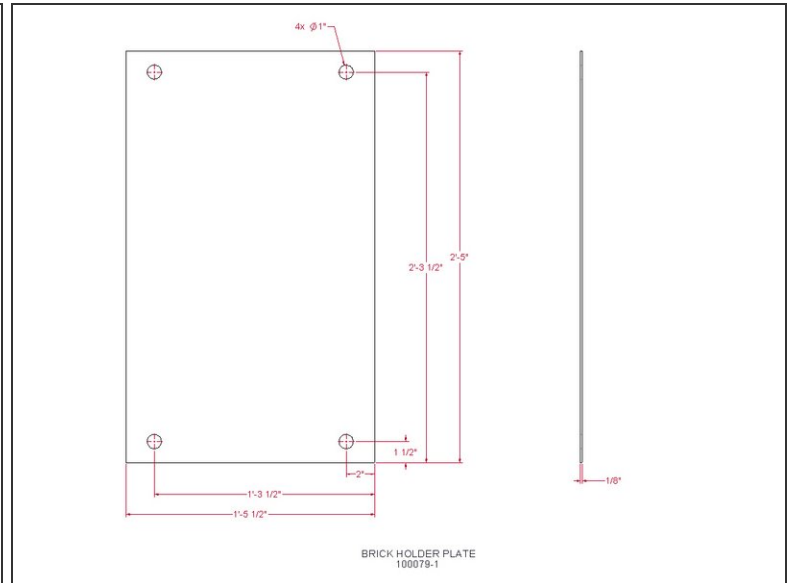
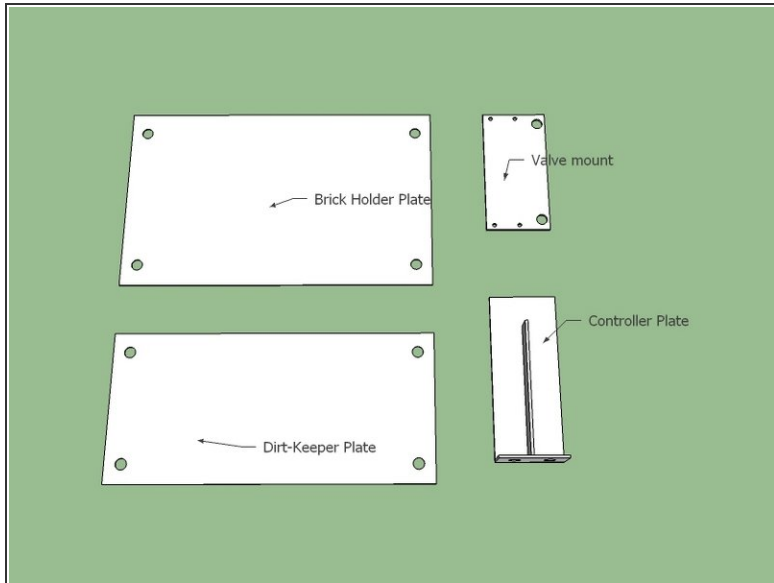
INTRODUCTION

Materials Needed: Steel: * .25x2 Flat: 12" (1) – Controller Mount * .25x3 Flat: 6"(1) Controller Mount Bottom Piece * .25x6 Flat: 12" (1) Valve Mount * .25x6 Flat: 15" (1) Controller Mount * .125x29x13.5 Sheet (1) Dirt Keeper Plate * .125x29x17.5 Sheet (1) Brick Holder Plate [Sketchup Model](#)

TOOLS:

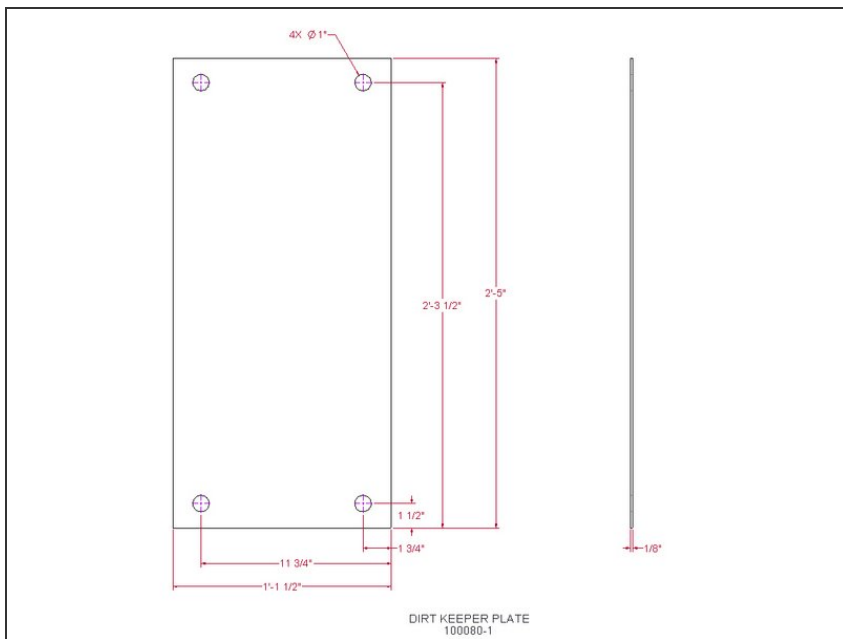
- [Drill press](#) (1)
 - [hole puncher](#) (1)
 - [Welder](#) (1)
-

Step 1 — Make Brickholder Plate



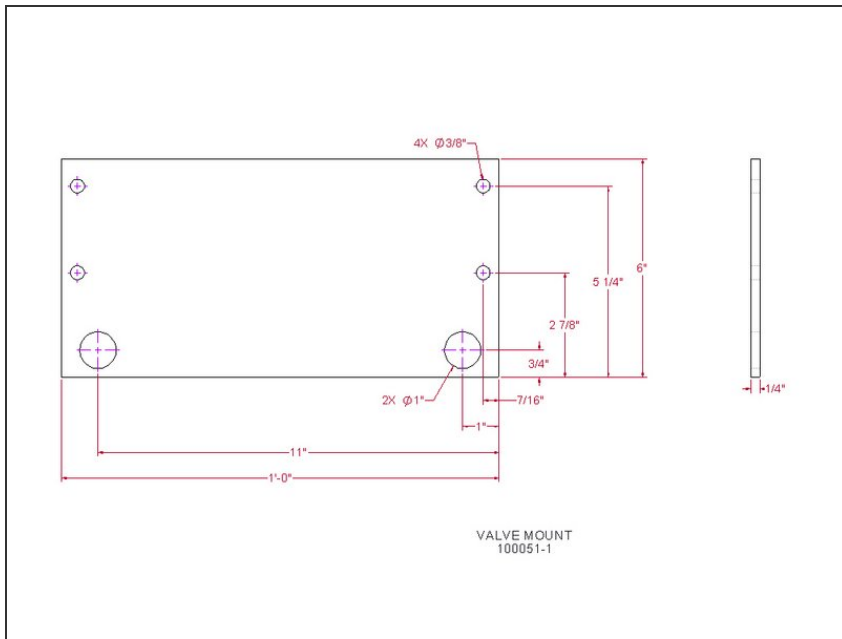
- Punch all holes.

Step 2 — Make Dirt-Keeper Plate



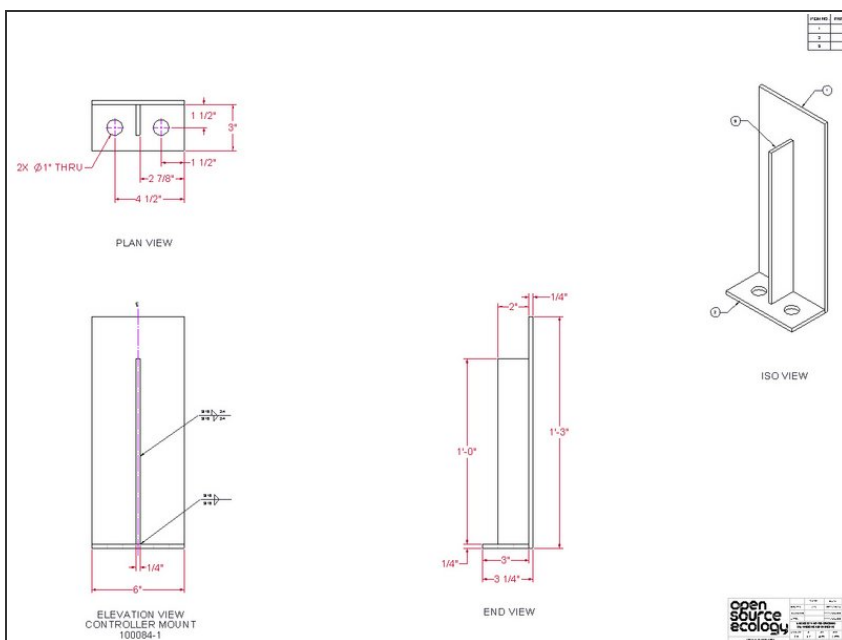
- Punch all holes

Step 3 — Make Valve Mount



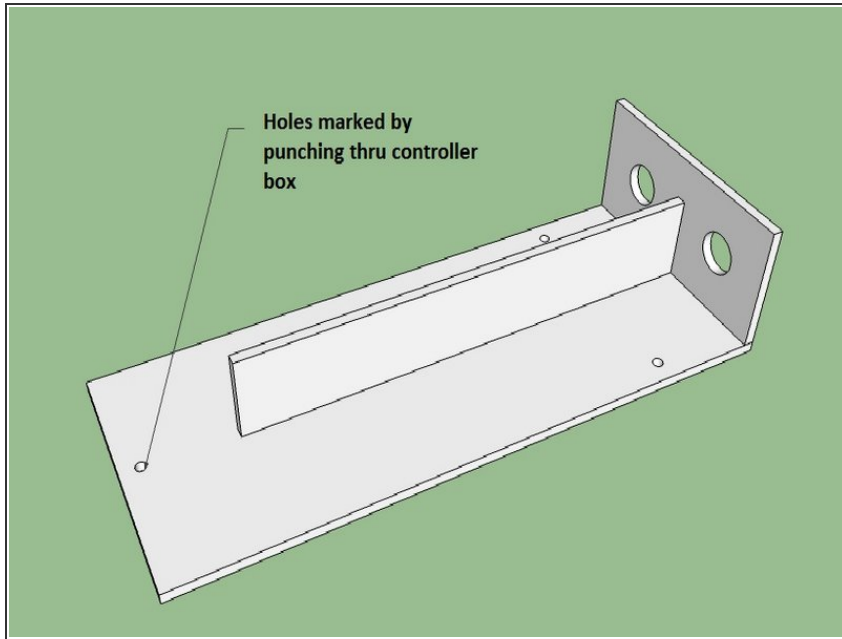
- Punch all holes, or drill if necessary.

Step 4 — Make Controller Plate



- Find your controller box and locate its mounting holes on the back.
- Place it on top of the 6x15 plate so it is square and the top hole is about 1/2" away from the top. Transfer punch the holes on the controller box to the plate.
- Drill those 1/4" holes.
 - You can drill them a little bigger (up to 5/16") if you'd like, as it's difficult to get the holes perfectly aligned.
- Punch the holes in the bottom piece.

Step 5



- Weld the bottom piece to the large plate.
- Make sure it's square
- Weld the flatbar on the back.
- Make sure it's square.