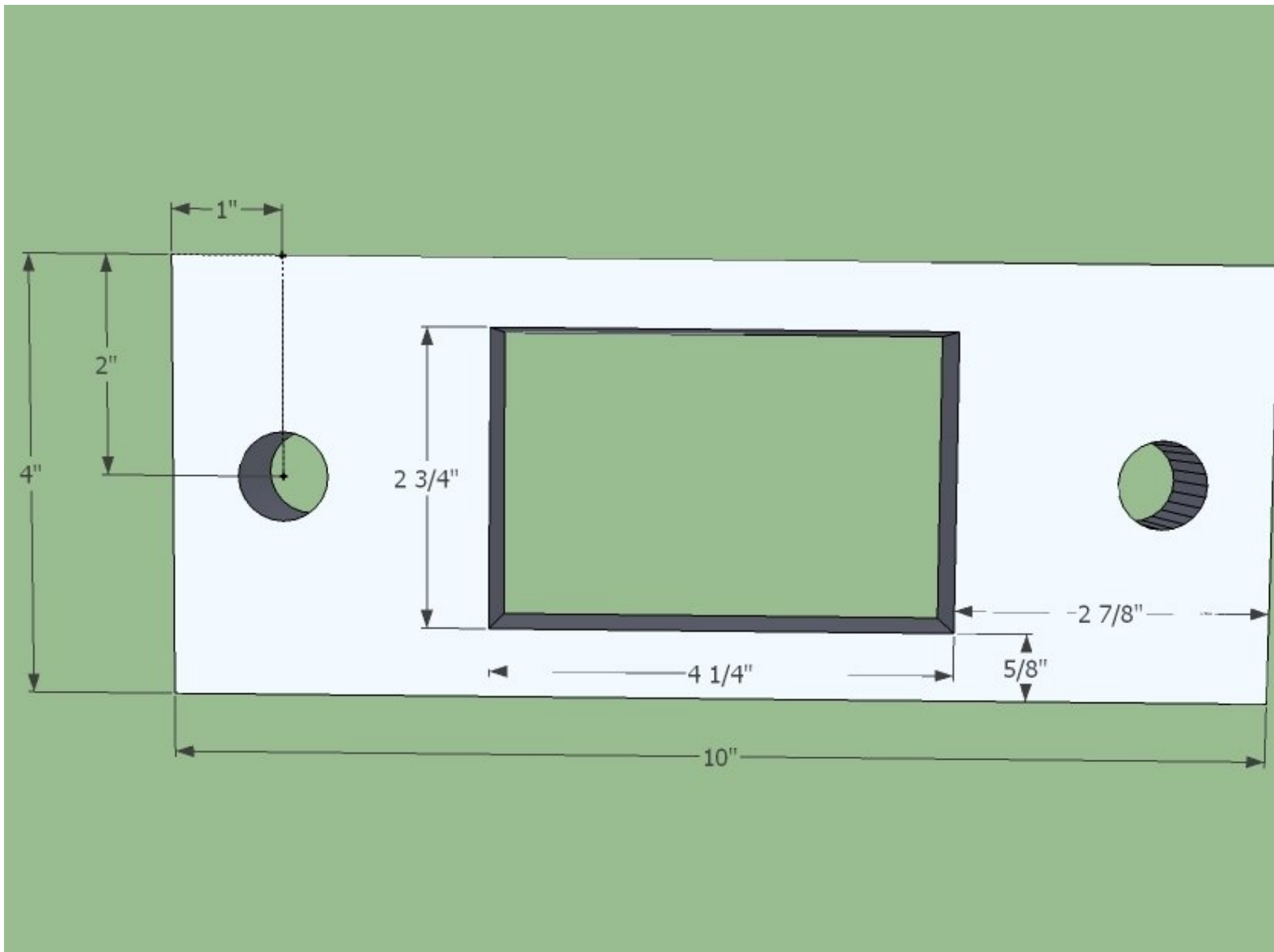




CEB: Feet

Add the feet to your Compressed Earth Brick Press.

Written By: Dozuki System



INTRODUCTION

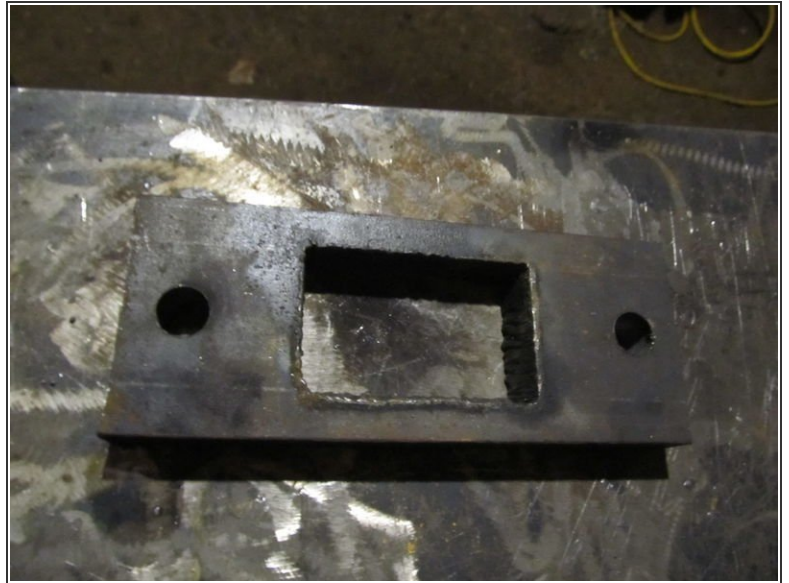
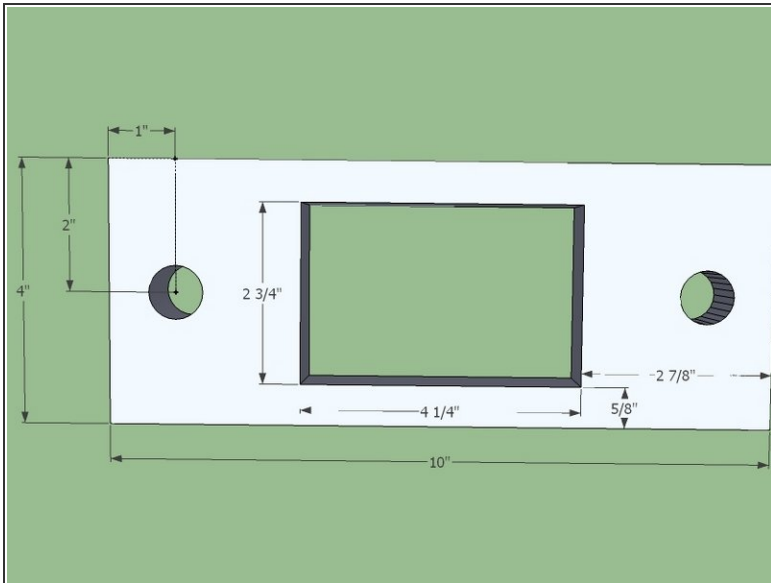
[Sketchup Model](#)



TOOLS:

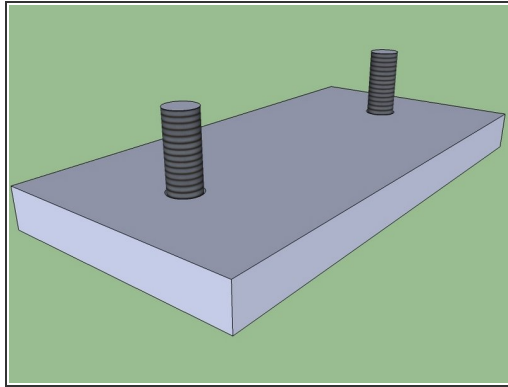
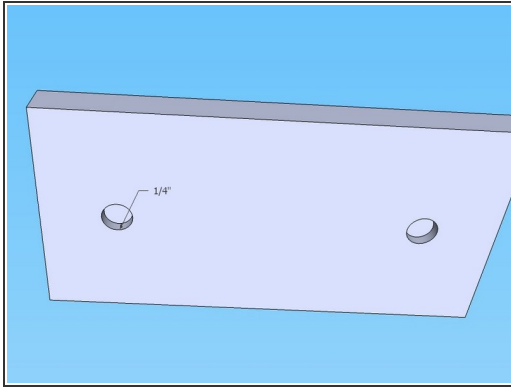
- [Drill or Mag-drill with 13/16" bit](#) (1)
 - [Grinder](#) (1)
 - [torch](#) (1)
 - [Welder](#) (1)
-

Step 1 — CEB: Feet




- Mark and magdrill or punch the holes (13/16") in the lower press foot.
- Place this centered on the upper press plate and transfer punch the hole locations.
- Mag-drill these holes.
- Torch out the hole in the center of the lower press plate.
- Grind it smooth.

Step 2



- Plug weld the threaded rod into the upper press plate, so that the threaded rod is about 1/4" deep in the plate.
- Fill the hole with weld, then grind it flush.

 The upper press foot **NEEDS** to be 12" exactly across at the top of it (the side without the bolts sticking up) or there will be "fuzzy edges" on your bricks. See the [video](#) for more info.