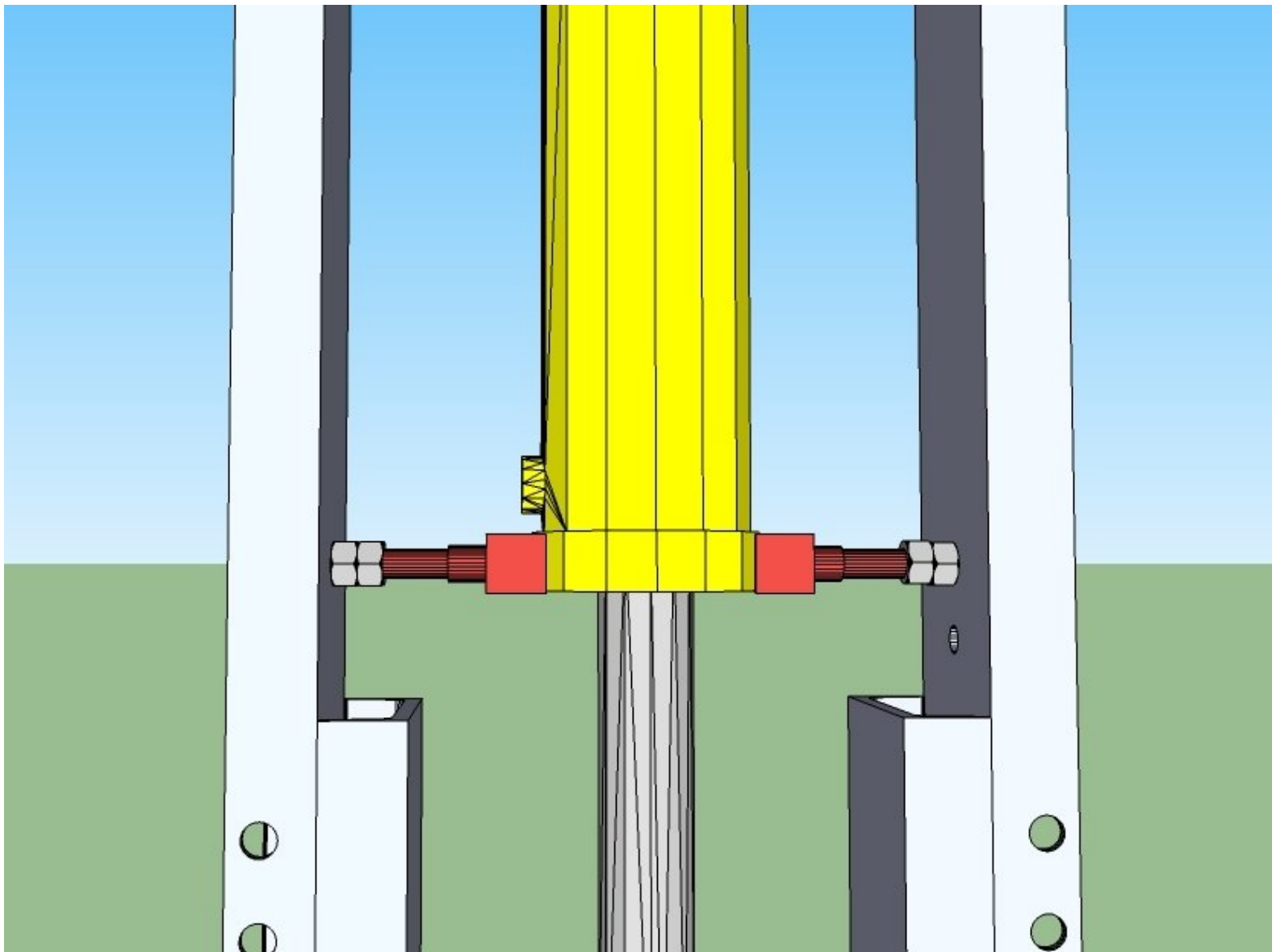




# CEB Main Frame: Install Small Components

Install small components on your Compressed Earth Brick Press.

Written By: Dozuki System



---

## INTRODUCTION

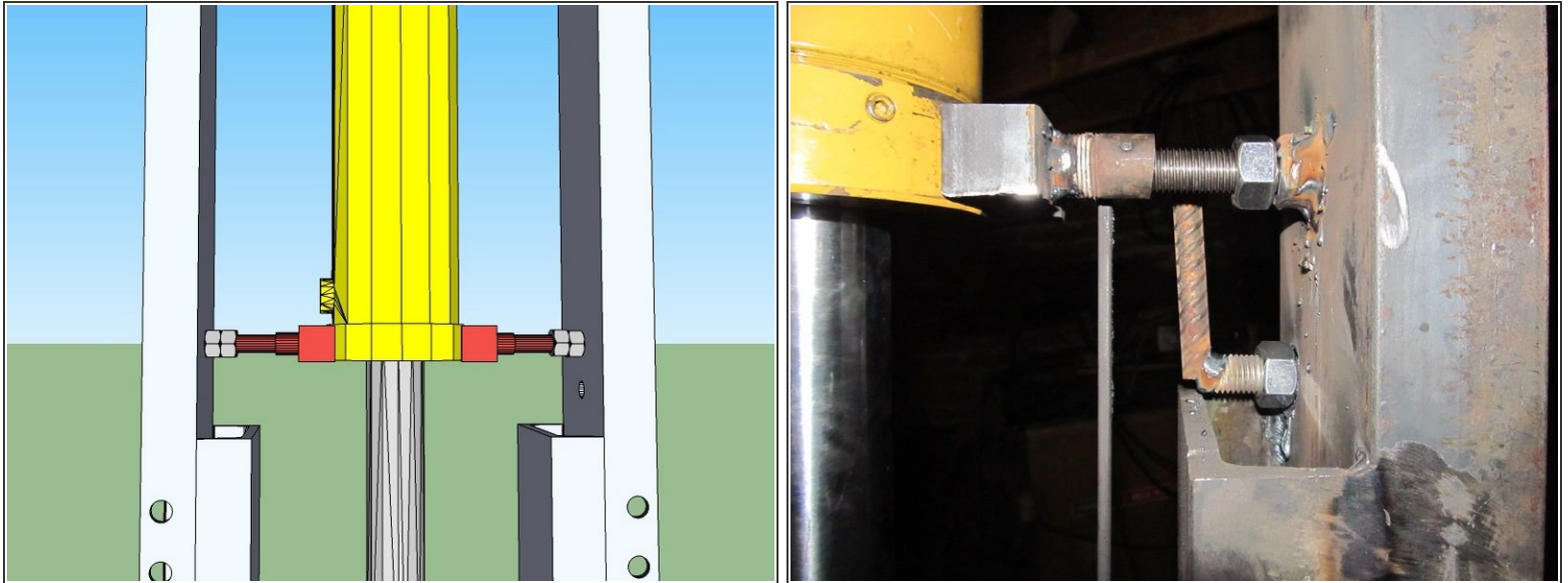
[Sketchup Model](#) Additional Materials Required: \* Thin Cylinder Supports \* Magnet Holder \* Sensor Holder \* Leg Holders (2) \* 3/4" Galvanized Nuts (3)

---

### TOOLS:

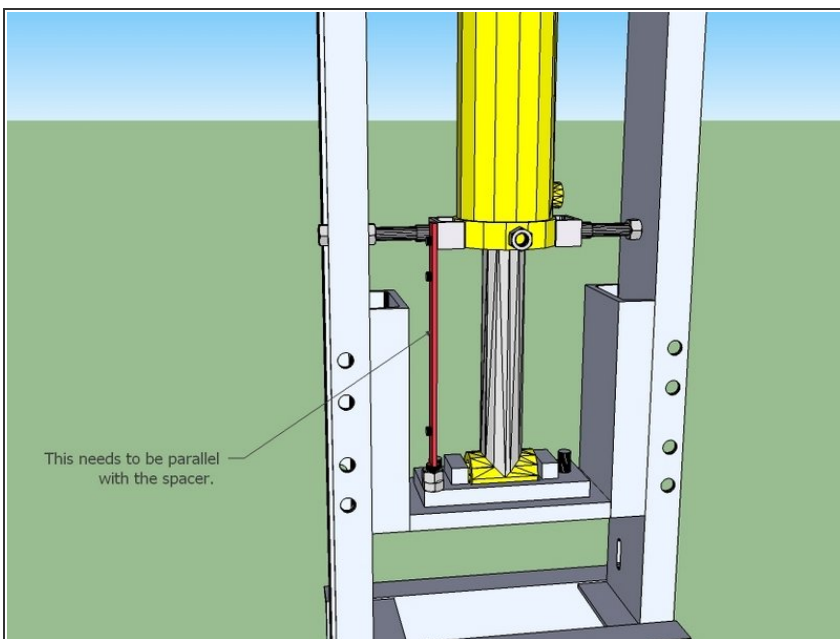
- [1 1/8" Wrenches](#) (1)
  - [Welder](#) (1)
-

## Step 1 — Install the thin Cylinder Supports



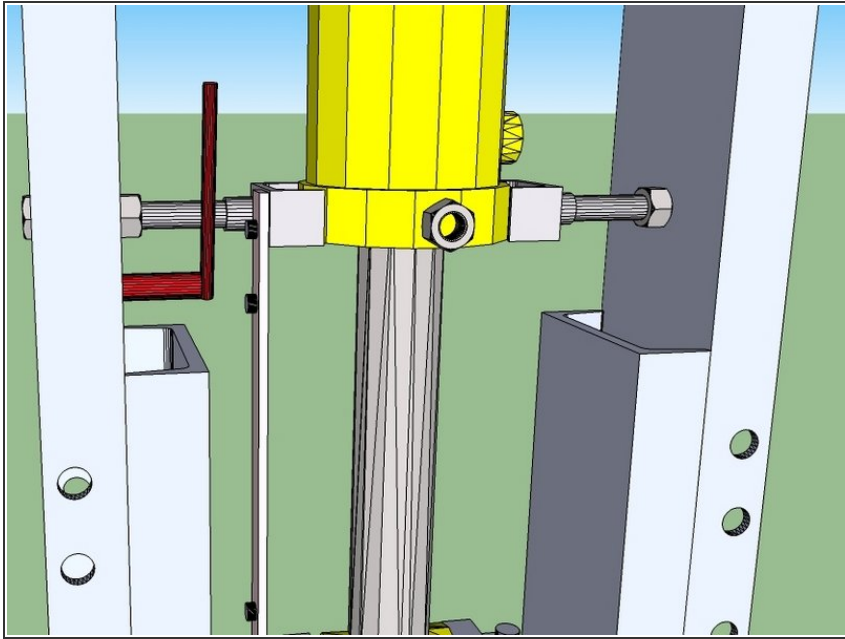
- Install the thin cylinder supports by screwing the bolt in with an extra nut on it as shown, and placing the u-channel against the cylinder.
- Get both of them snug so the cylinder is centered with pressure on each side.
- Tighten down the nut to lock it.

## Step 2 — Install the magnet holder



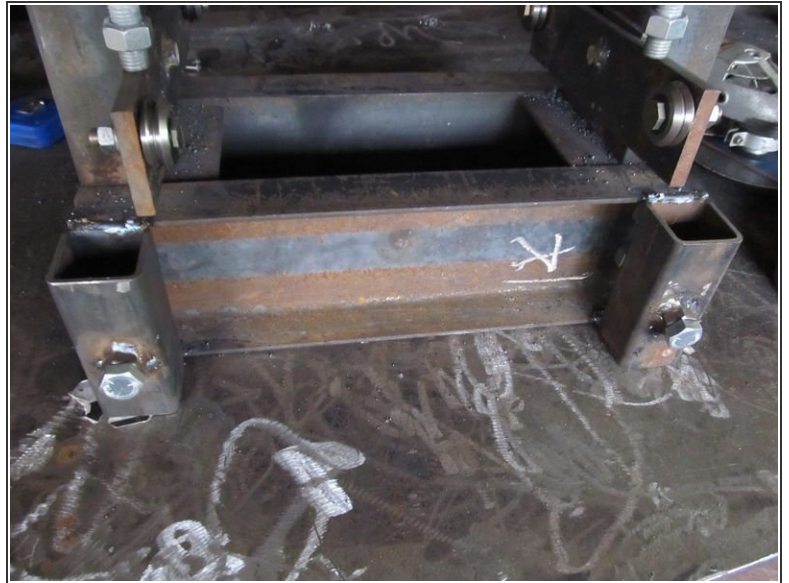
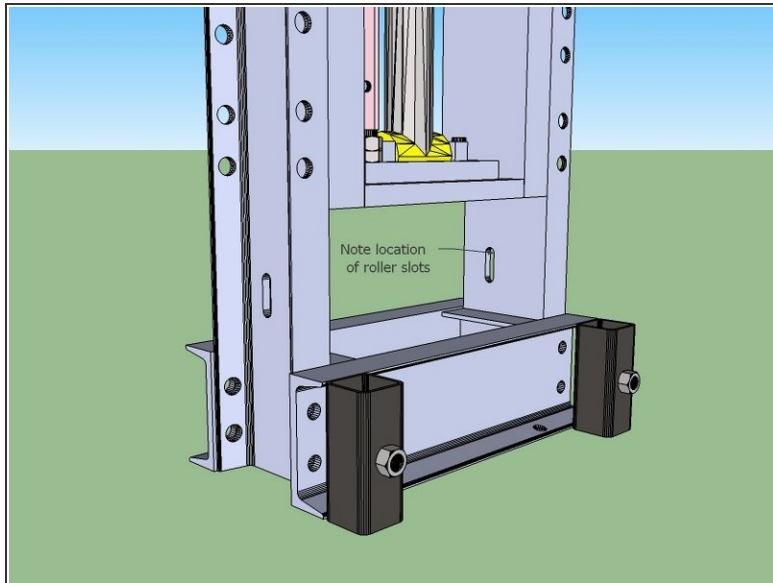
- Install the magnet holder onto the press foot.
- The flatbar needs to be parallel with the verticals.
- Lock it down with the nut.

### Step 3 — Install the Sensor Holder



- Install the 6" sensor holder so the end of it is overlapping the path of the magnet holder as shown. The other sensor holder will be installed later.

## Step 4 — Weld the Leg Holders



- Position them on the upper horizontal members as shown.
  - Use the location of the roller guides to insure you attach them to the right side.
  - Insure they are square in all directions
- Weld them to the horizontal members fully.