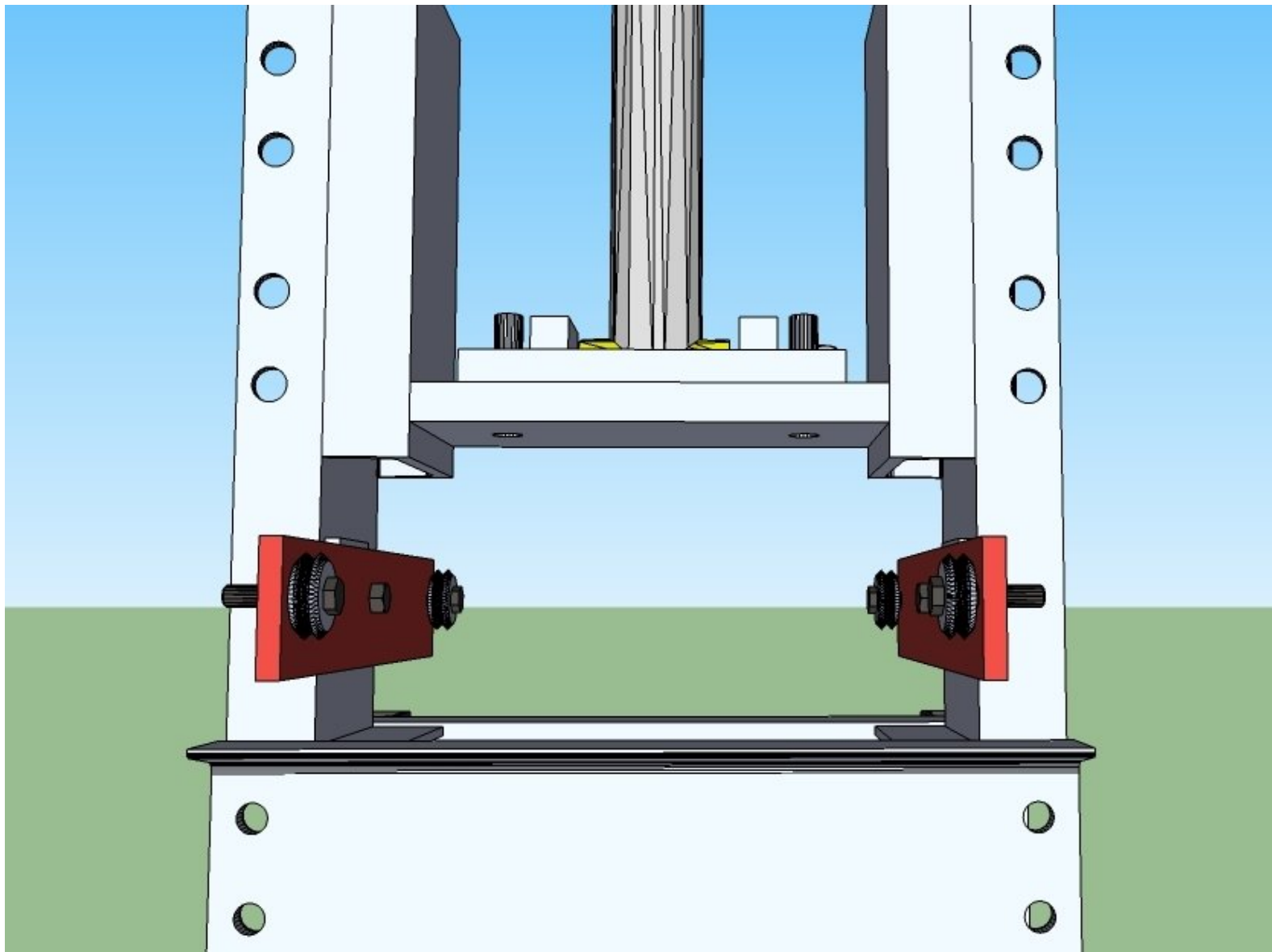




CEB: Fit the Drawer Members

Fit the drawer members on your Compressed Earth Brick Press.

Written By: Dozuki System



INTRODUCTION

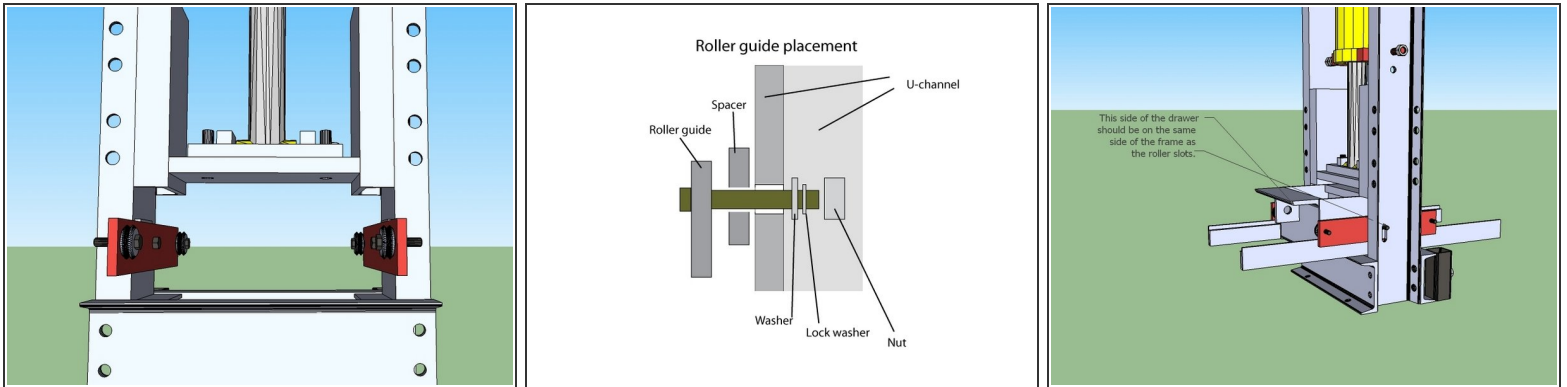
[Sketchup Model](#) Additional Materials Required: * Roller Guides * Soil Loading Drawer * Wide Cylinder Supports * Drawer Members * 3/4"x2" Bolts (16) * 3/4" Nuts (16) * 3/4" Washers (16) * 1/2" Washer (2) * 1/2" Lock Washer (2) * 1/2" Nut (2)



TOOLS:

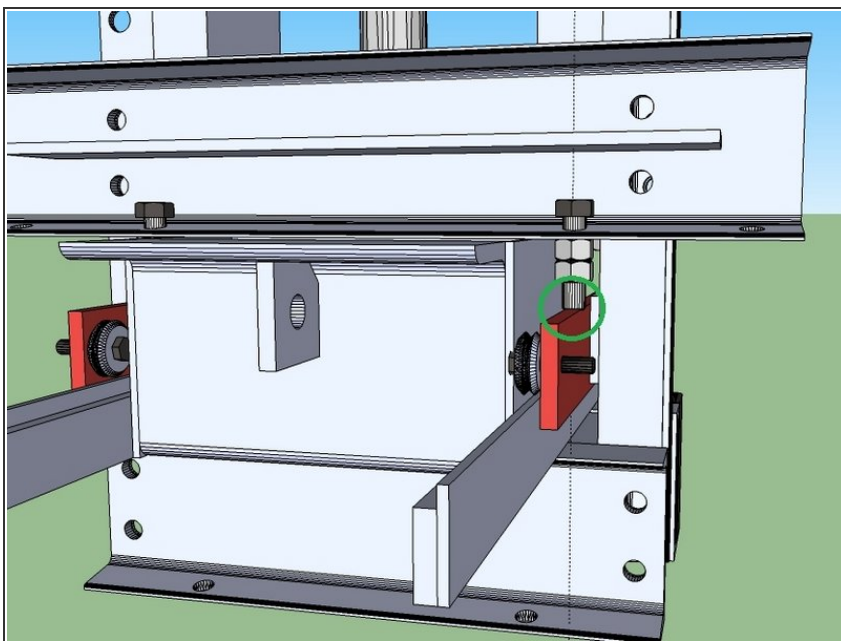
- [various wrenches](#) (1)
-

Step 1 — CEB: Fit the Drawer Members



- Install the Roller guides as shown in the illustration. One side should have a 1/2" spacer, and the other should have a 3/8" spacer plate.
- Tighten the bolts snug, but so that they can still move up and down.
- Replace the drawer as if you're going to stretch the cylinder again.
 - The roller bearings should be on top of the rails on the drawer, and be putting no pressure on the drawer.

Step 2



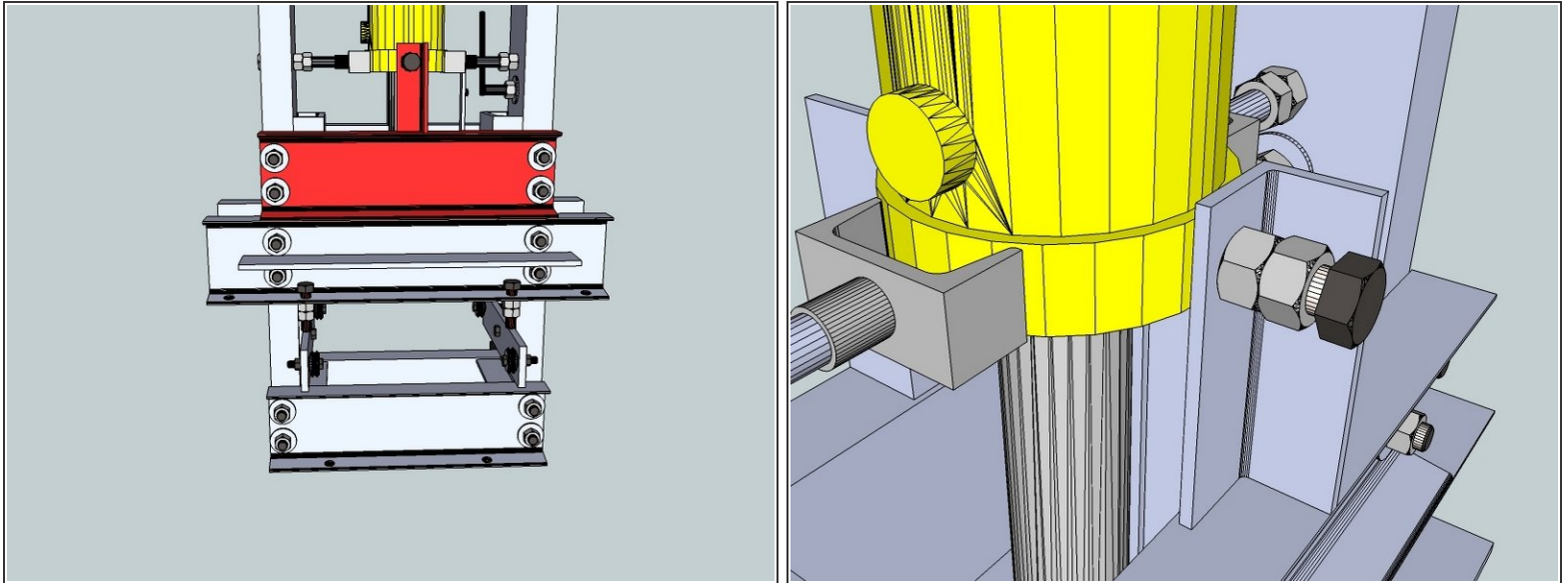
- Loosely bolt on the drawer members.
- Adjust them horizontally so that the adjustment bolts are centered on the roller guides. See image.
- Finger tighten the bolts on the drawer members, as they are sitting on top of the drawer.

Step 3



- Try to slide the drawer in and out. If the drawer gets stuck somewhere, investigate and find where it's hitting. (It almost certainly will).
- You'll probably need to loosen one, or both of the drawer members and move it up a bit.
 - This can be done uniformly using cardboard shims. See photo. Place the shim between the drawer and the crossmember. Tighten the bolts again. Remove the shims by "jiggling" the drawer.
- If it's hitting a spacer, grind down the spacer.
- If the drawer itself is prohibitive in some spots, it wasn't grinded evenly. Grind down the high spots.

Step 4



- Once the drawer is properly adjusted, tighten these bolts all the way.
 - Make sure the drawer adjustment nuts are still centered on the roller guides.
- Tightly bolt the wide cylinder supports to the frame, leaving no gap between them and the drawer members.
- Tighten the bolts at the top of the wide cylinder supports so they are touching the cylinder on each side. Tighten the lock nut.
- Go back through the entire frame and make sure every bolt is tight.