



Loader Arms

Instructions for fabricating LifeTrac Loader Arms.

Written By: Dozuki System



Step 1 — LifeTrac Loader arms



- Prepare loader arms.

Step 2



- Mark loader attach plates for hole locations.

Step 3 — Punch or drill mount plate holes.



- Insert wisdom here.

Step 4 — Drill holes in loader arms.



- Insert wisdom here.

Step 5 — Torch out arm mounts



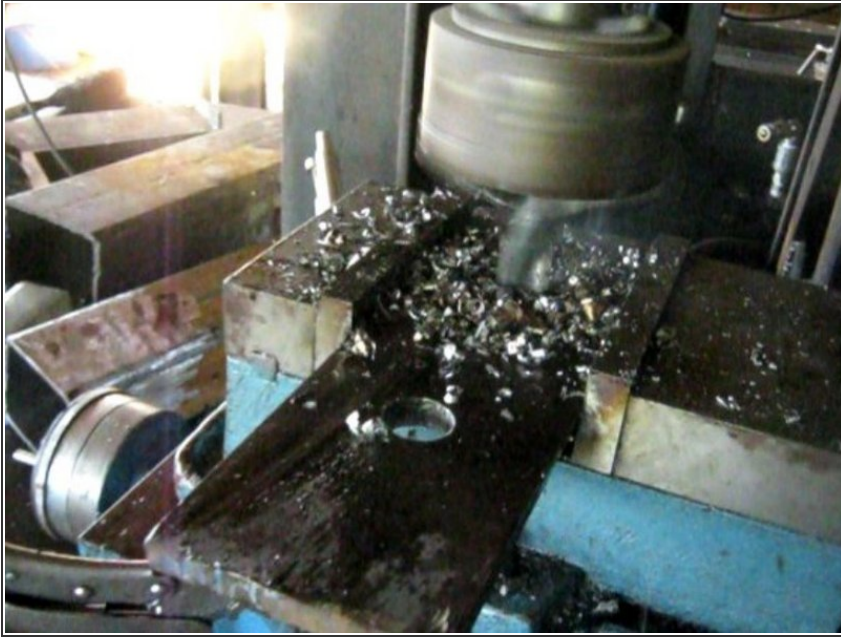
- Insert wisdom here.

Step 6 — Grind arm ends.



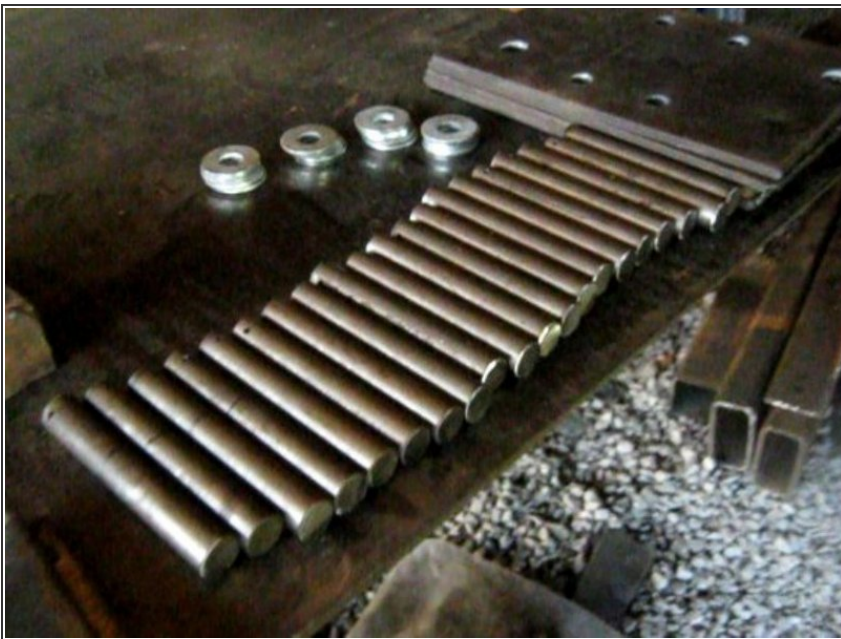
- Insert wisdom here.

Step 7 — Drill or punch 1" holes for cylinder mount bottoms.



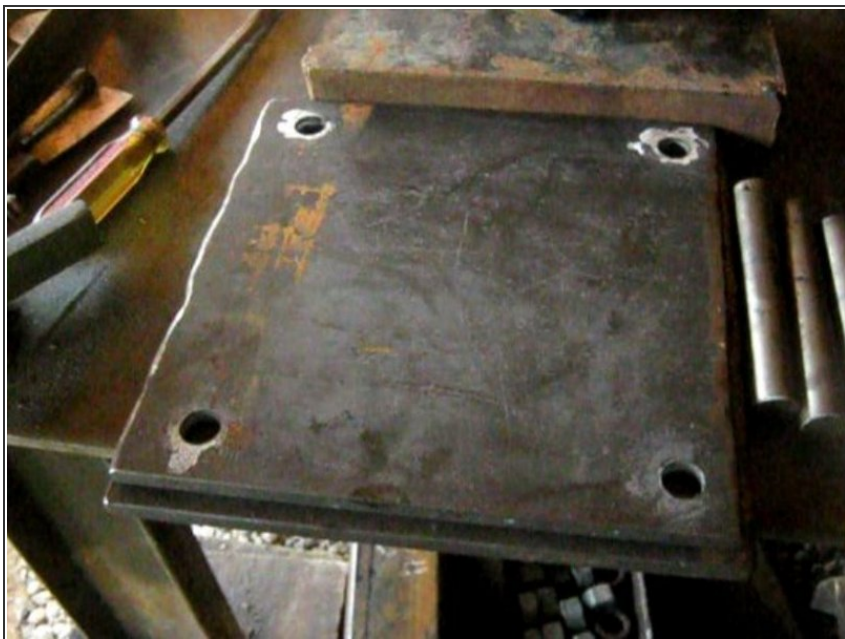
- Insert wisdom here.

Step 8 — Cut pins to size.



- Insert wisdom here.

Step 9 — Prepare bottom mount plates for loader arms.



- Insert wisdom here.

Step 10 — Torch out 2" inserts.



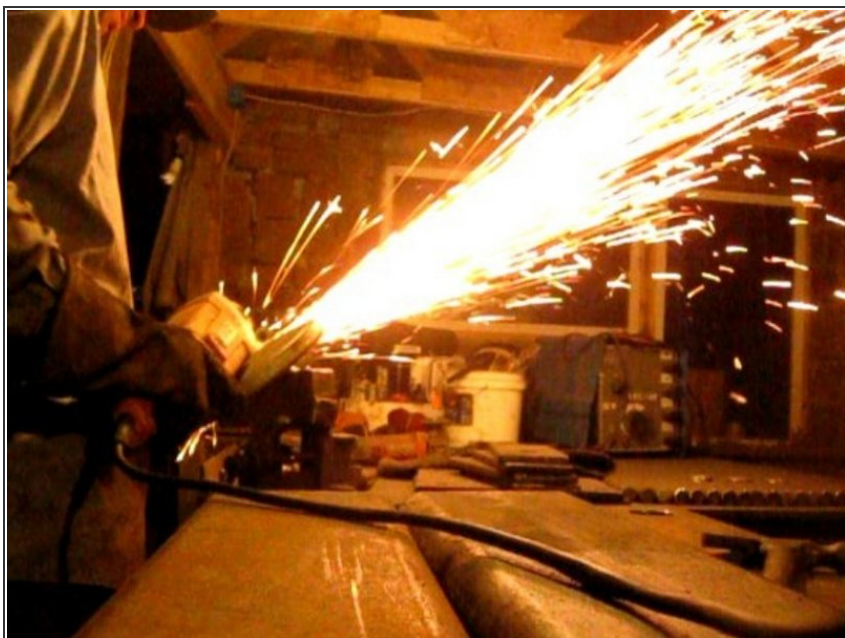
- Insert wisdom here.

Step 11 — Mark arm locations on frame.



- Insert wisdom here.

Step 12 — Grind 2" inserts.



- Insert wisdom here.

Step 13 — Drill 1" hole in inserts.



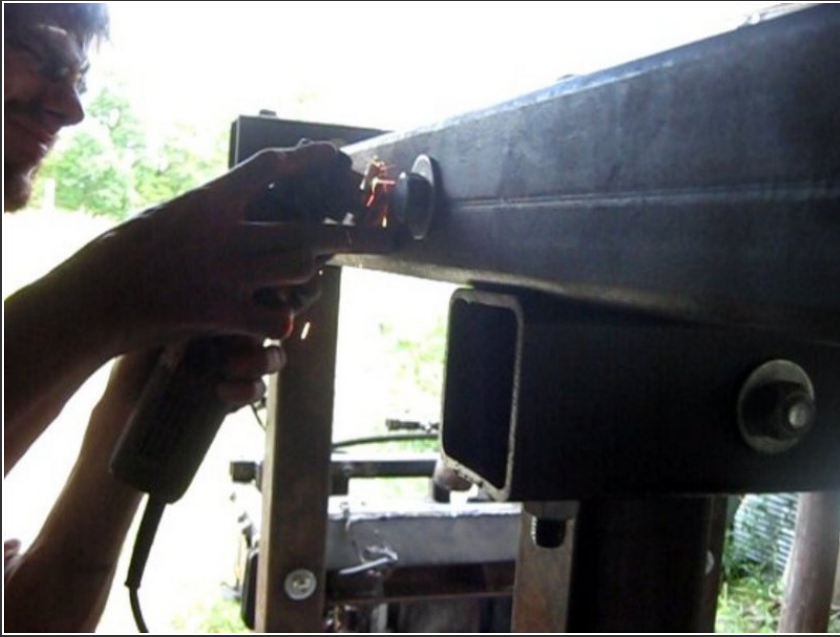
- Insert wisdom here.

Step 14 — Torch out holes in frame for loader arms.



- Insert wisdom here.

Step 15 — Smooth out holes for loader arms.



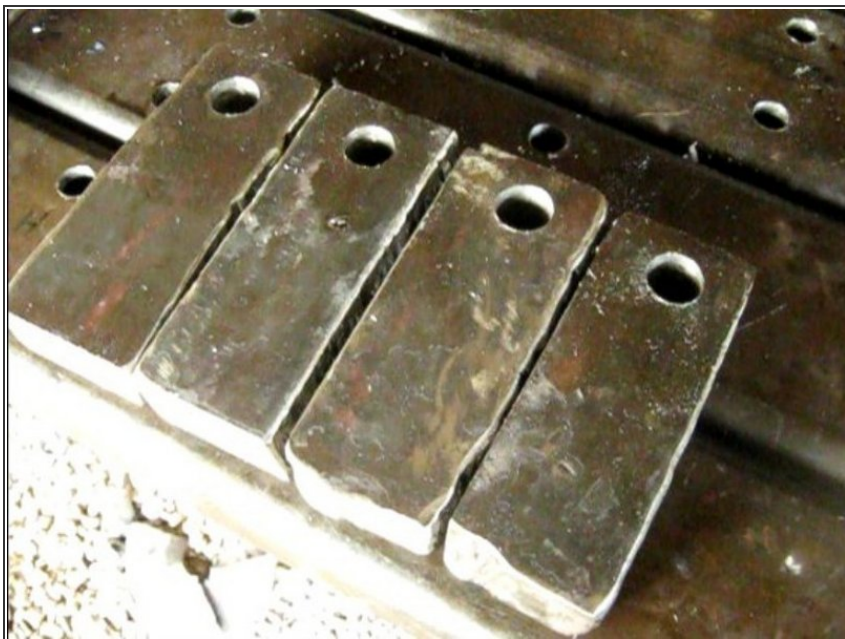
- Insert wisdom here.

Step 16 — Fit shafts and DOM bushing for loader arms.



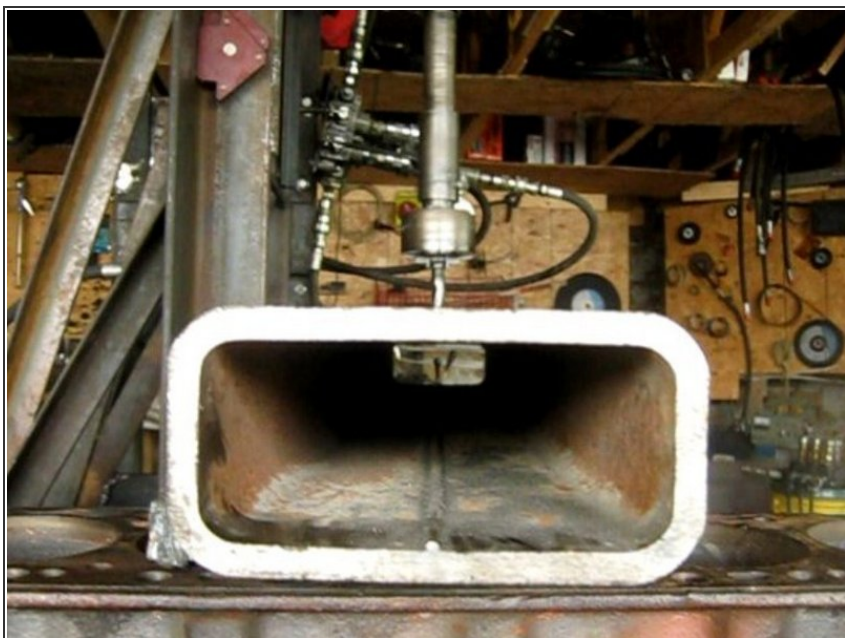
- Insert wisdom here.

Step 17 — Finish inserts.



- Insert wisdom here.

Step 18 — Drill rear loader arms.



- Insert wisdom here.

Step 19 — Mark loader arms for insert plug welds.

- Insert wisdom here.

Step 20 — Torch out plug weld holes.

- Insert wisdom here.

Step 21 — Grind plug weld holes.



- Insert wisdom here.

Step 22 — Line up plug inserts for welding.



- Insert wisdom here.

Step 23 — Plug weld inserts.



- Insert wisdom here.

Step 24 — Grind plug welds.



- Insert wisdom here.

Step 25 — Finished inserts.



- Insert wisdom here.

Step 26



No instructions yet.

Step 27 — Arm gussets plug welded.



- Insert wisdom here.

Step 28 — Prepare pins for welding.



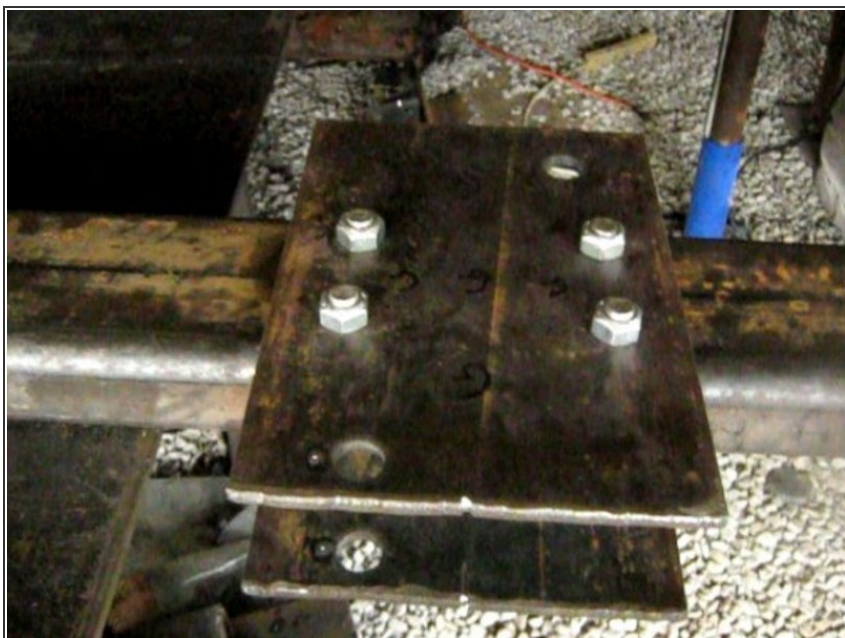
- Insert wisdom here.

Step 29 — Mount cylinder base plates.



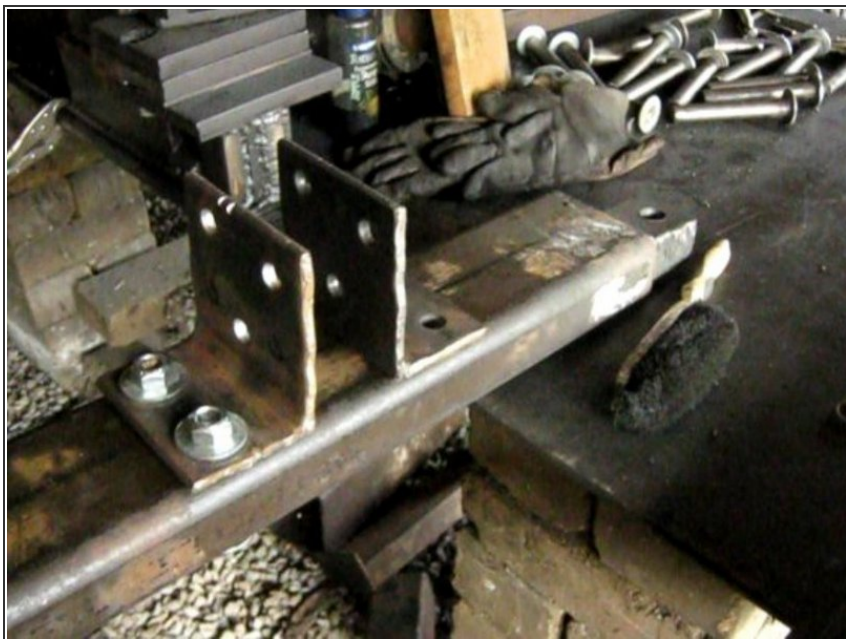
- Insert wisdom here.

Step 30 — Mount cylinder plates to arms.



- Insert wisdom here.

Step 31 — Mount cylinder cross support.



- Insert wisdom here.

Step 32 — Mount cylinder arms on frame.



- Insert wisdom here.

Step 33 — Arm cross supports.



- Insert wisdom here.

Step 34 — Put on real loader arms. File:LTfab36.jpg



- Insert wisdom here.

Step 35 — Hang arm cross support.



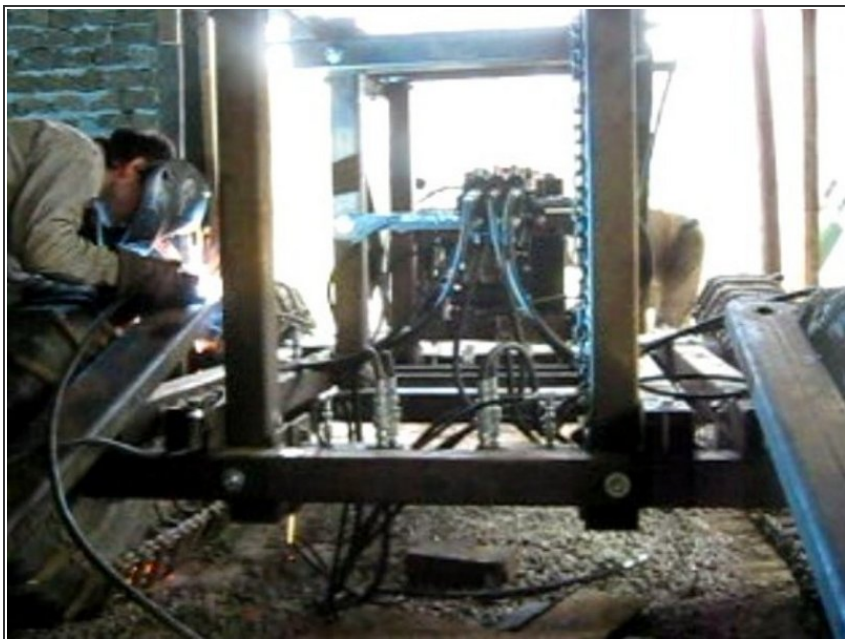
- Insert wisdom here.

Step 36 — Torch misfit holes.



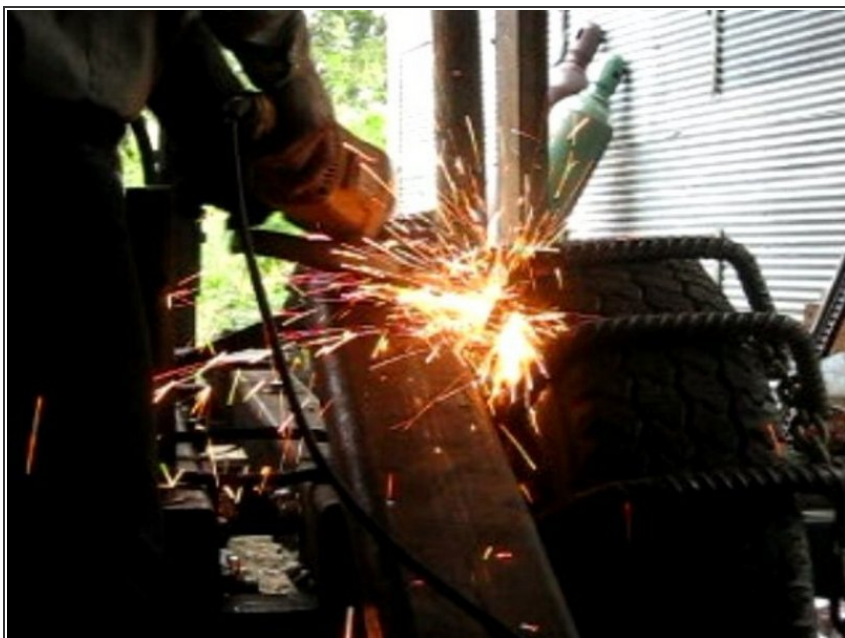
- Insert wisdom here.

Step 37 — Weld inner arm gussets.



- Insert wisdom here.

Step 38 — Grind inner arm gussets.



- Insert wisdom here.

Step 39 — Finish attaching cross supports.



- Insert wisdom here.

Step 40 — Finish weld arms.



- Insert wisdom here.

Step 41 — Bolt cylinder attach plates.



- Insert wisdom here.

Step 42 — Attach cylinders.



- Insert wisdom here.

Step 43 — Mount quick attach (QA) plate cylinders.



- Insert wisdom here.

Step 44 — Begin attaching hoses.



- Insert wisdom here.

Step 45 — Hose attachment.



- Insert wisdom here.

Step 46 — Tack weld gusset nuts.



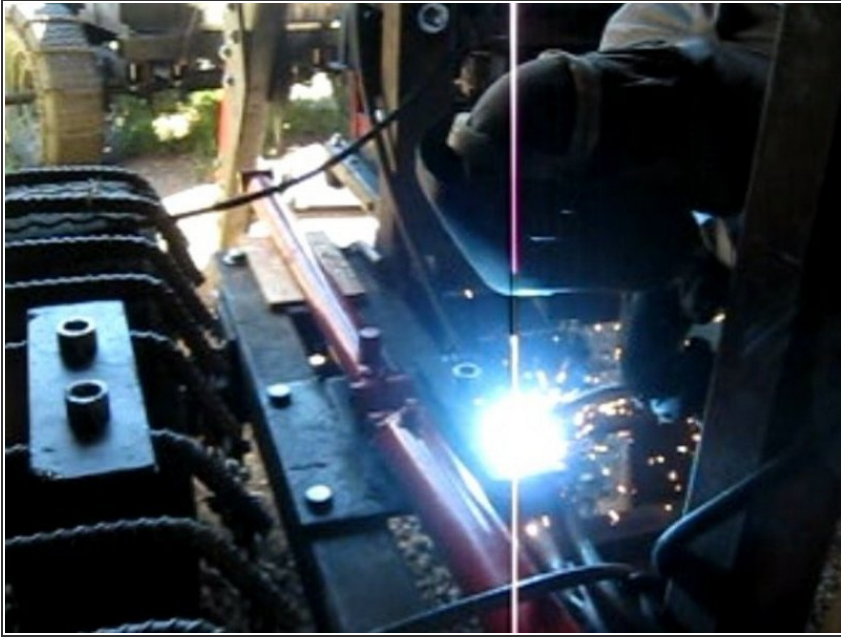
- Insert wisdom here.

Step 47 — Tack weld bottom cylinder support nuts.

- Insert wisdom here.

Step 48 — Tack weld cylinders.

- Insert wisdom here.

Step 49 — Complete bottom cylinder gusset welds.

- Insert wisdom here.

Step 50 — Botom cylinder gusset nuts welded.

- Insert wisdom here.

Step 51 — Finish weld top cylinder.



- Insert wisdom here.