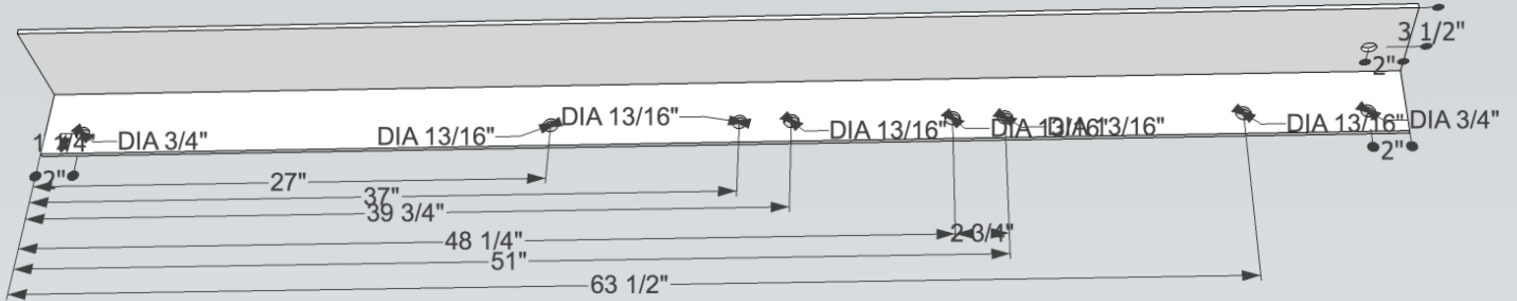




Primary Arms

Assembling the Primary Arms: the main component for connecting the center column of the CEB Press to its support system.

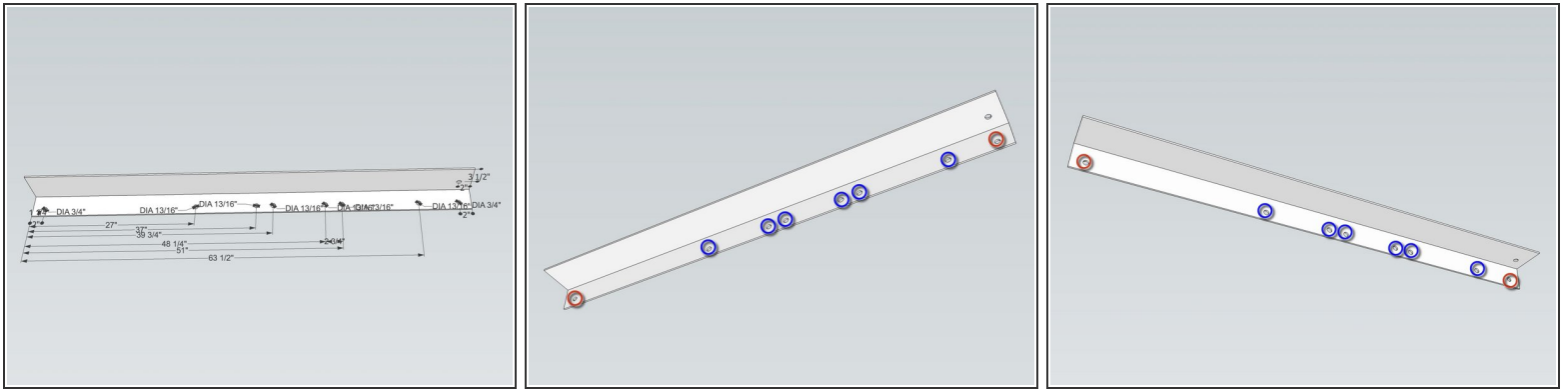
Written By: Dozuki System



INTRODUCTION

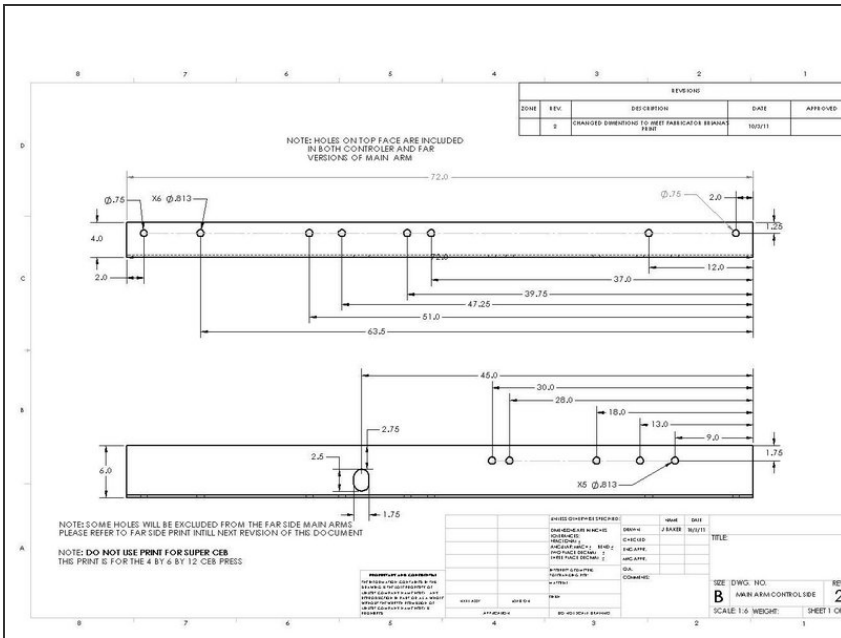
The primary arms attach the cylinder/frame assembly to the secondary arms, which support it. They also attach to the Brickholder plate, the Dirt-keeper plate, the Controller Mount, and the Valve Mount.

Step 1 — Primary Arms



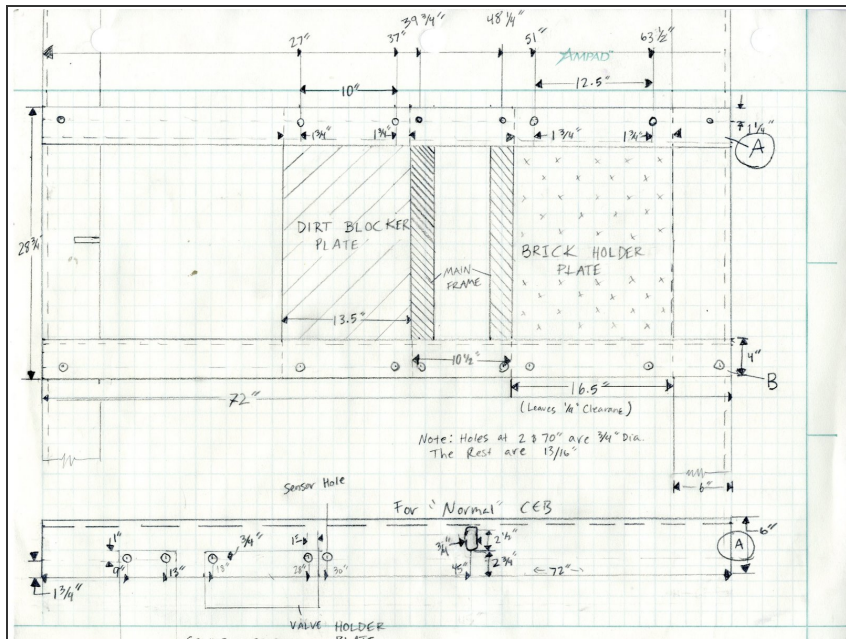
- On one piece, mark holes on the 4" side, all 1.25" away from the edge for:
 - Two total 3/4" diameter holes at 2" and 70."
 - Six total 13/16" diameter holes at 27", 37", 39 3/4", 48 1/4", 51", and 63 1/2".

Step 2



- Use this piece to mark the locations on the other side. They are to be mirrored, so make sure they aren't in the same exact orientation.

Step 3 — Punch the Holes



- Determine which one is arm A and which is arm B by looking at the diagrams. Label them.
- On arm A, punch the following holes on the 6" side of the angle iron, measured from the left, each centered 1 3/4" from the long edge: Also, torch the hole for adjusting the rollers at 45". Its shape is shown in the diagrams.
- Five total 13/16" diameter holes at 9", 13", 18", 28", and 30" inches.
- Torch the roller adjustor hole in arm B, 45" from the right, so the holes will be at the same frame location.