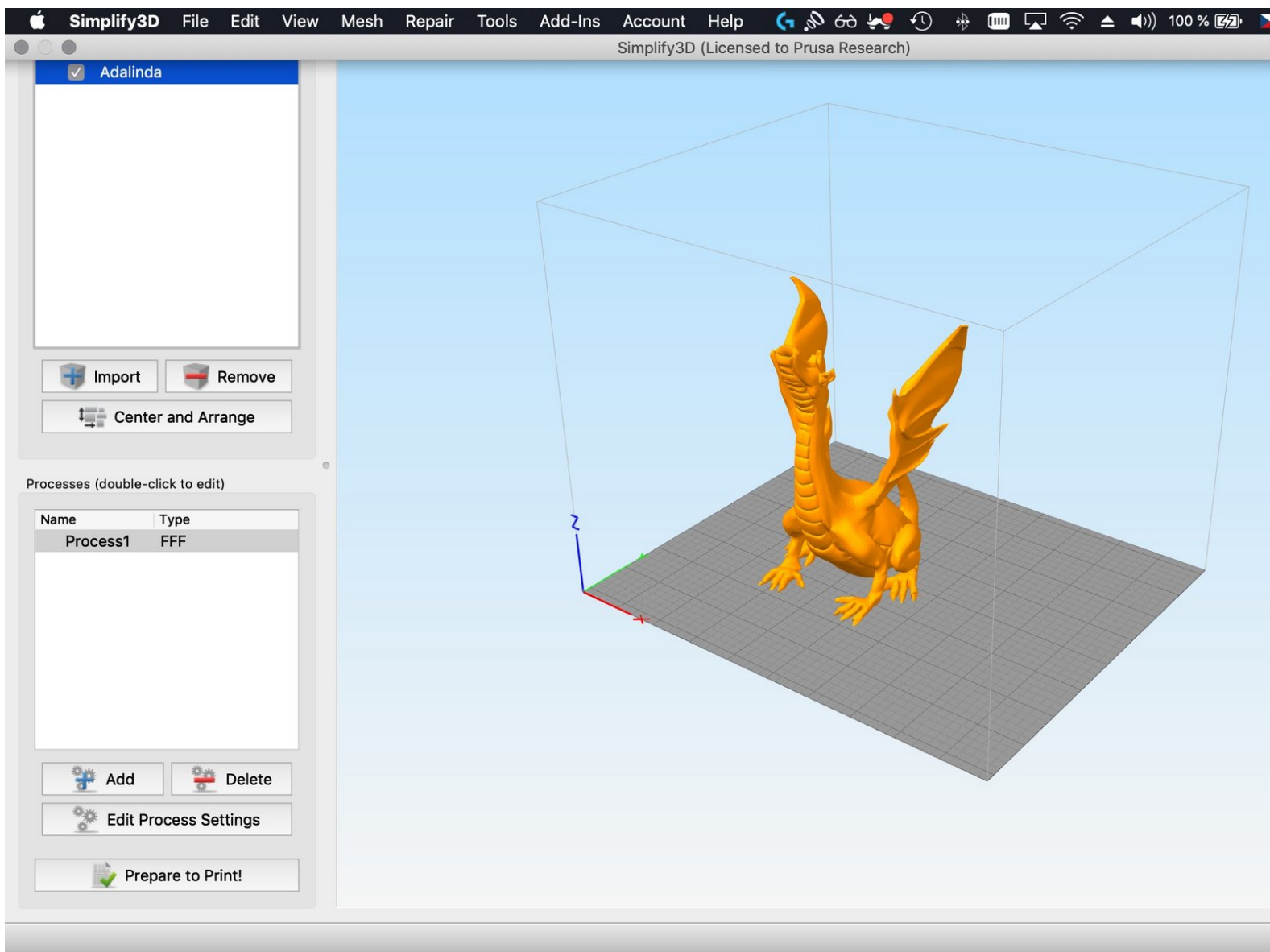


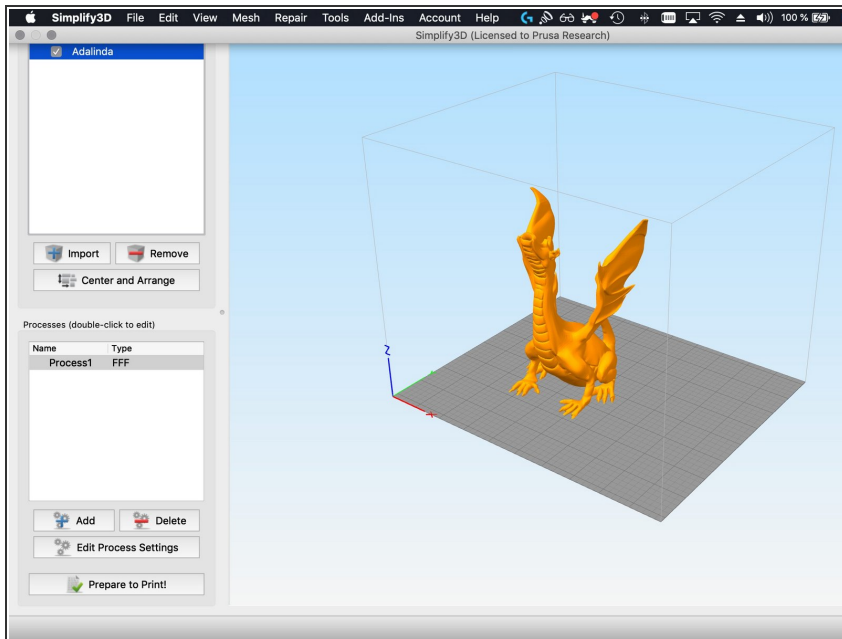


How to import profiles to Simplify3D 4.x (Windows & macOS)

Written By: Jakub Dolezal



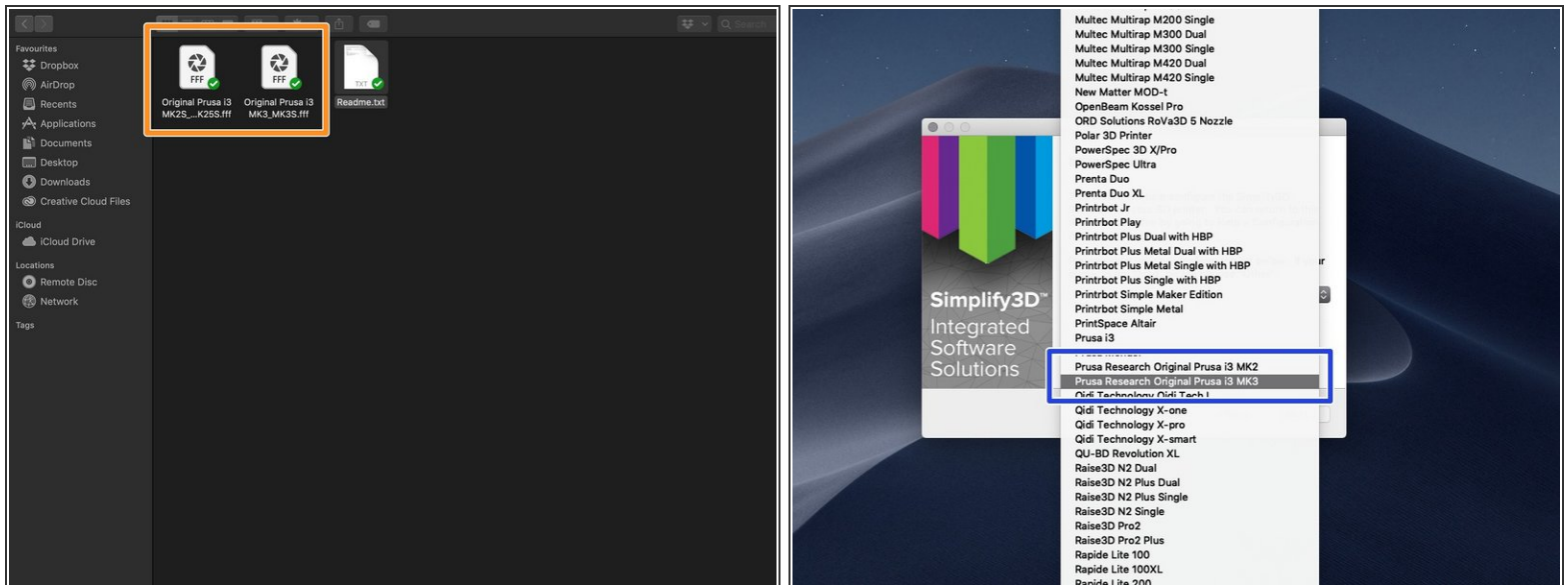
Step 1 — Getting the Simplify3D profiles



WARNING: Current profiles were tested on the **Simplify3D (S3D) 4.1.2** and we can not guarantee those will work on the older versions.

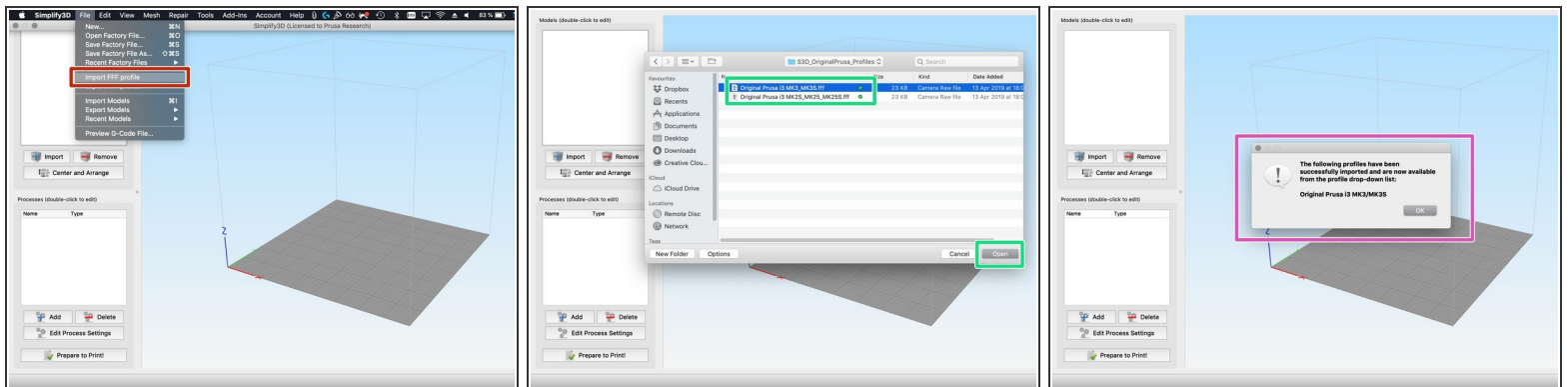
- The following guide will help you import and activate **custom profiles tweaked by Josef Prusa for your Original Prusa i3 printer.**
- This guide is valid **both for Microsoft Windows and Apple macOS.**
- **Important:** latest profiles include settings for generic **PLA, ABS, PETG** as well as **Prusament.**
- **Supported printers:**
 - Original Prusa i3 **MK3S** and MK3
 - Original Prusa i3 **MK2.5S**, MK2.5 and MK2S
- [Click here to download the S3D package](#)

Step 2 — What is inside the package?



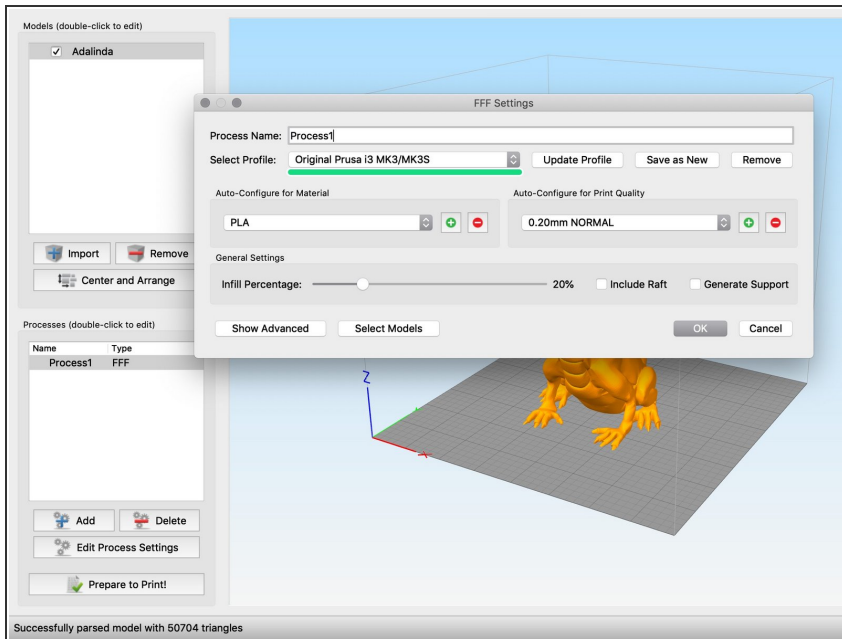
- The package for S3D includes just two config files, which will be imported in few clicks :)
- Make sure the Simplify3D is installed and running. The Prusa printers, which are in the list aren't officially supported, we will import the correct ones in the next step.

Step 3 — Importing the profiles



- From the top menu select **File -> Import FFF profile**
- Head to the folder with downloaded profiles and select the one according to your printer.
- Wait for the S3D to confirm, the import was successful.

Step 4 — Using the settings



- Open the **Processes** dialogue and in "**Select Profile:**" select your Original Prusa printer.
- **We are ready! Slice your model and give it a try ;)**