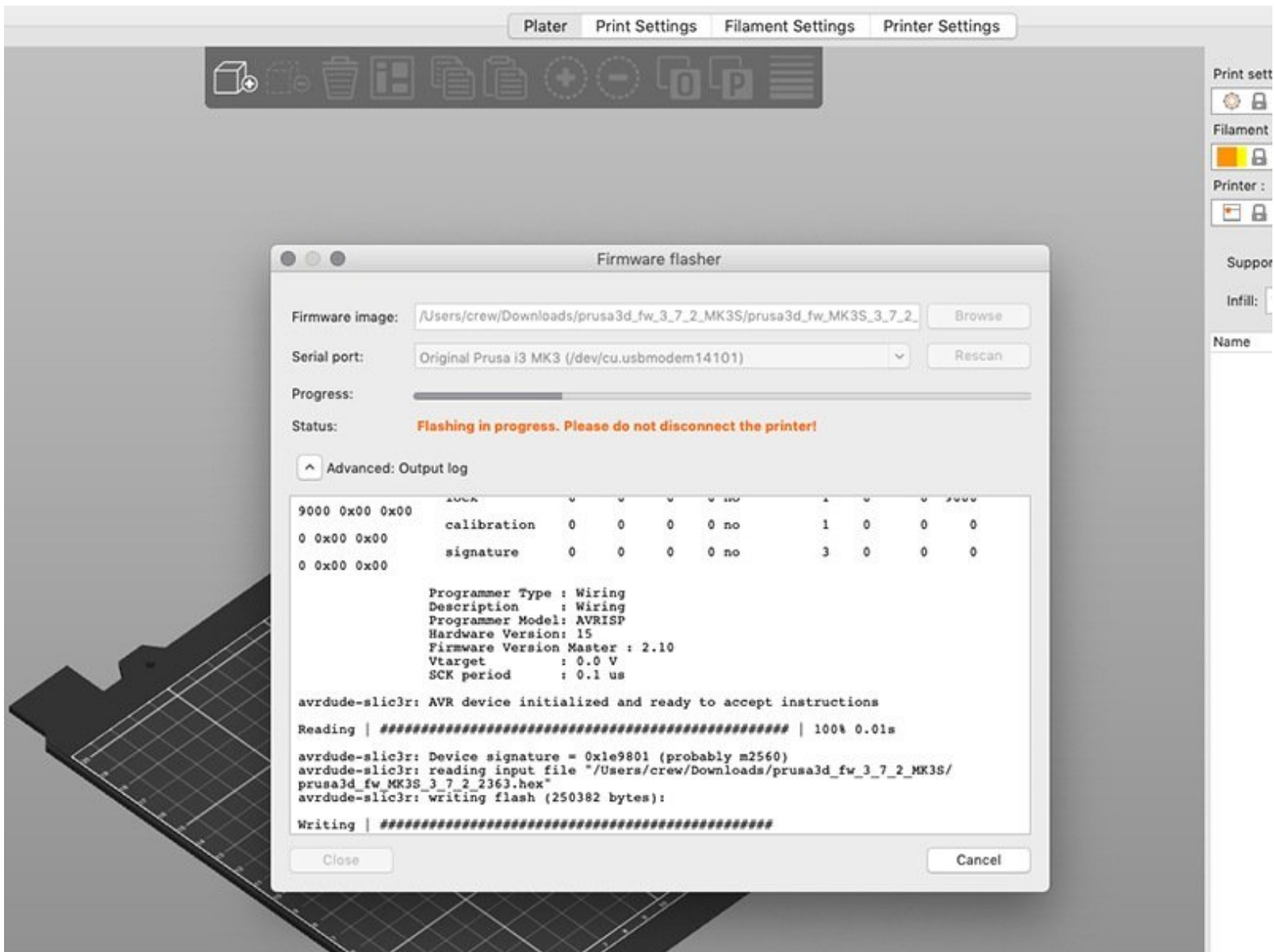




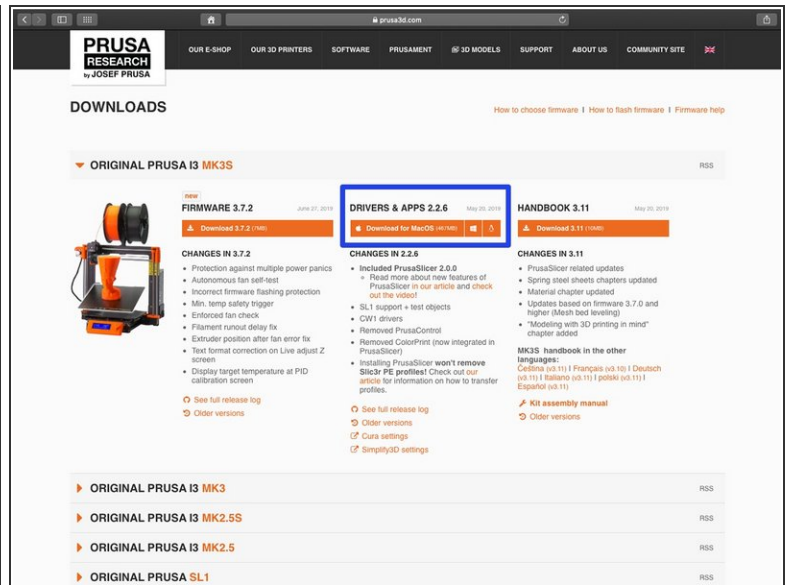
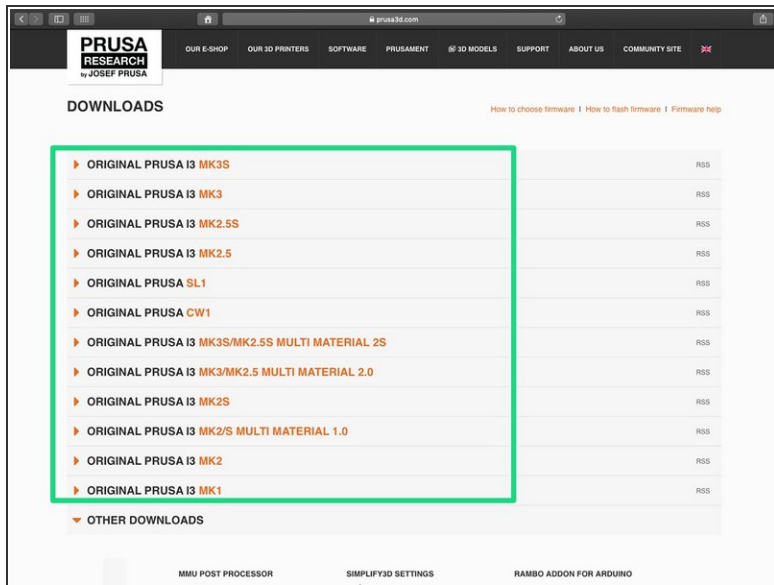
Upgrading the firmware v1.6

In this guide, we will upgrade the firmware of your Original Prusa i3 printer.

Written By: Josef Prusa



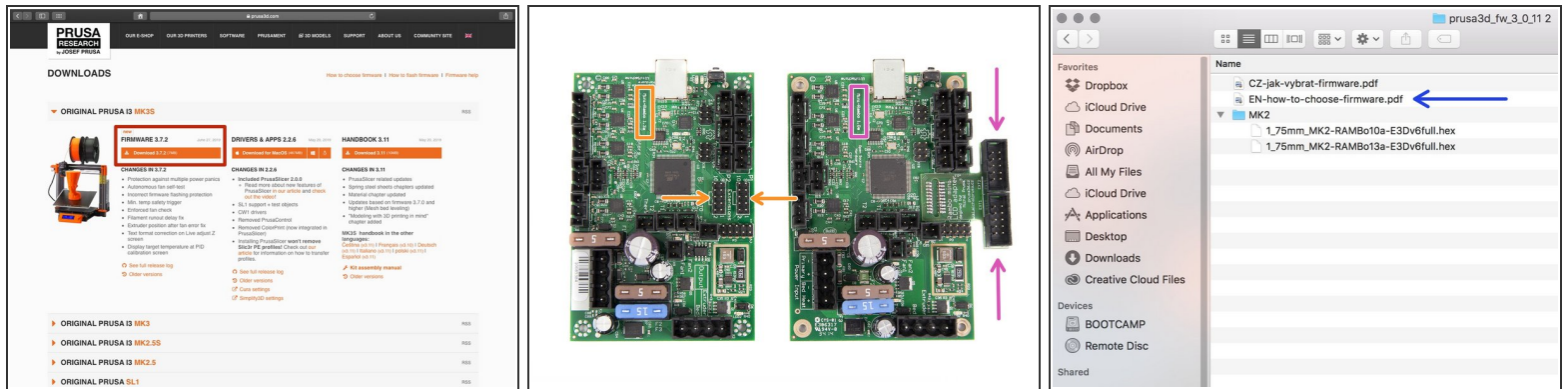
Step 1 — Download the necessary software



⚠ Firmware updater is now part of the PrusaSlicer (previously Slic3r PE). In case you have it already installed, you can skip to the next step.

- Go to <http://www.prusa3d.com/drivers/> and select your printer.
- Find the driver section and download the latest package. Leave this page opened for the next step!
- Install drivers on your Windows, macOS or Linux system.
- **i** Part of the driver's package is PrusaSlicer, which includes a tool for firmware upgrade.

Step 2 — Download the new firmware (Single material printer)



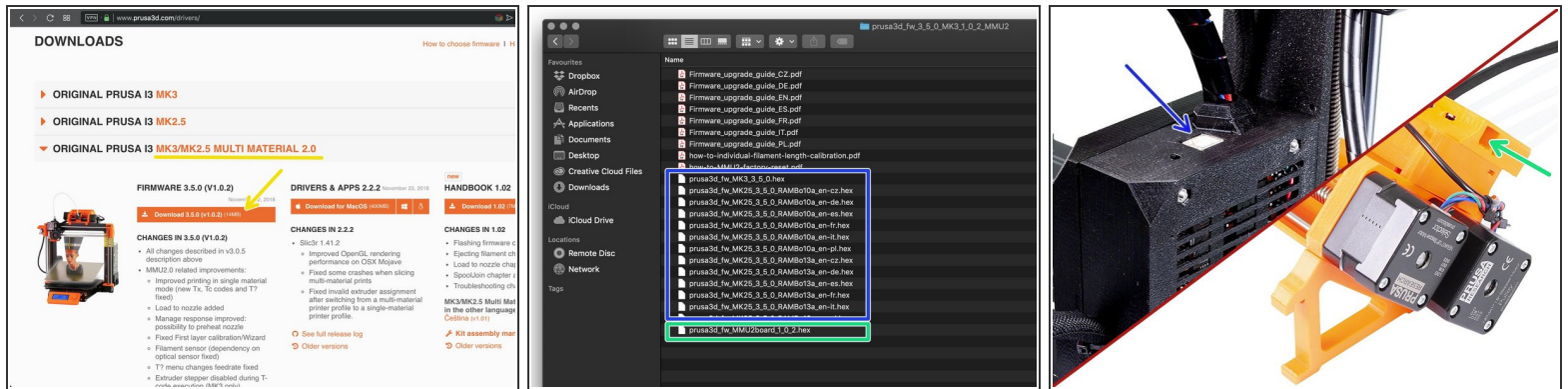
- Go back to prusa3d.com/drivers/ to get the firmware for your printer.
- Download the zip file with the firmware to your computer and unzip it.

⚠ For the Mini RAMBo used in MK2/MK2S/MK2S MMU/MK2.5/MK2.5S you have to choose the firmware based on the version of the board you have. Inside the package there will be two files with either RAMBo 13a or RAMBo 10a in the name.

- **RAMBo 13a** - used in the majority of the MK2 and all MK2S printers (most common). **LCD connectors are part of the board.**
- **RAMBo 10a** - used in the MK1 and some early batches of MK2 (very rare). **LCD connectors are outside the board.**
- More info about the boards used in **MK2 a MK2S** can be found [in this PDF file](#) (also enclosed in the firmware package).
- More info about the boards used in **MK2.5/MK2.5S** can be found [in this PDF file](#) (also enclosed in the firmware package).

i For the MK3/MK3S there is only one version, no need to choose.

Step 3 — Download the new firmware (Multi material printer)

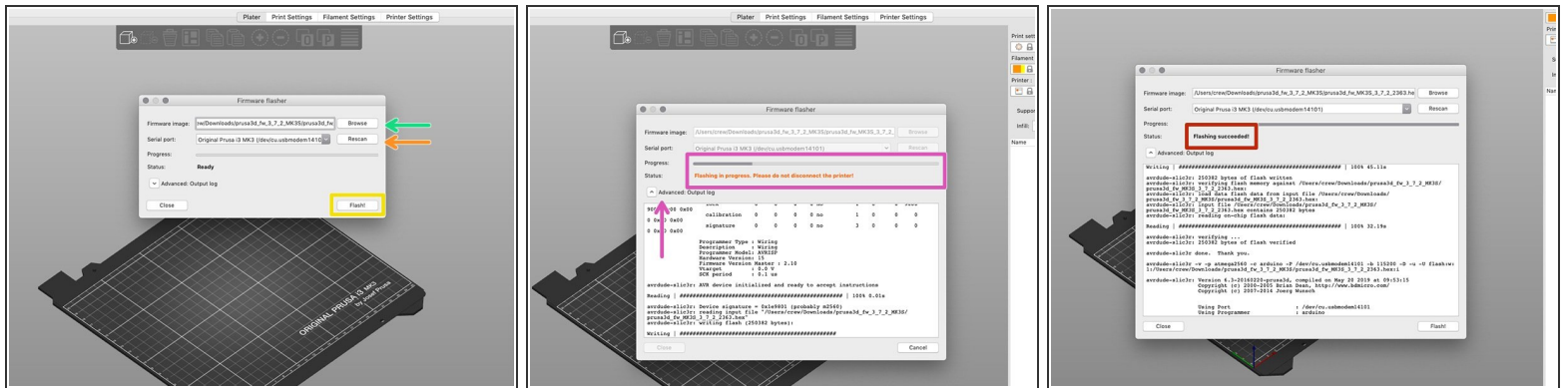


⚠ In case of the **MMU2/MMU2S** upgrade your printer consists of two motherboards, which have to be upgraded separately.

- Visit prusa3d.com/drivers/ to get the firmware for your MMU2/MMU2S printer.
- **The EINSY or miniRAMBo board** located in the black 3D printed case. Look for the MK3/MK3S or MK2.5/MK2.5S hex files, then connect your computer using a USB type B cable.
- **The MMU2/MMU2S control board** is located inside the MMU2/MMU2S unit sitting on the top of the printer's frame. Look a hex file with "MMU2board" in the name. Then connect your PC using a MicroUSB cable.

- ① We will flash the firmware files in the next step. Make sure you have prepared both cables and the **printer is turned on**.
- ① Always use the bundled USB cables to avoid issues with the connection between your computer and the printer.

Step 4 — Updating firmware using PrusaSlicer



- Open PrusaSlicer and from the menu select **Configuration ->Flash Printer Firmware**
- Connect the printer to your computer using the bundled USB cable and select it from the menu. Hit **Rescan** if the printer is not on the list
- Select the firmware file on your harddrive (*.hex). Do not place the firmware on a network share.
- Hit the **Flash** button.
- Wait until the process is completed. You can click on "Advanced: ..." to see the flashing process including detailed log.
- When the flashing process is done, you will be informed.
- **We're done here!** Your printer is ready to rock ;)
- **i** In case of issues with flashing the firmware please visit our [troubleshooting article](#).