

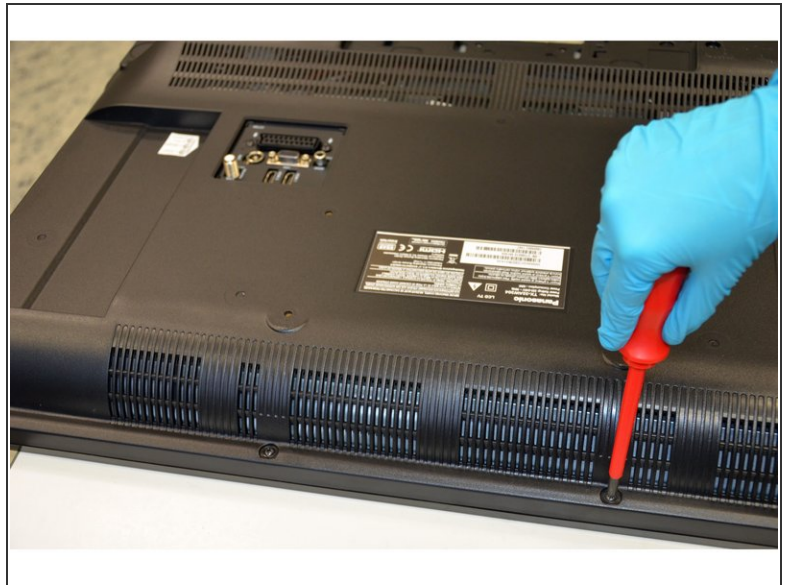


# Panasonic TX-32AW304 TV set

Written By: Amaia

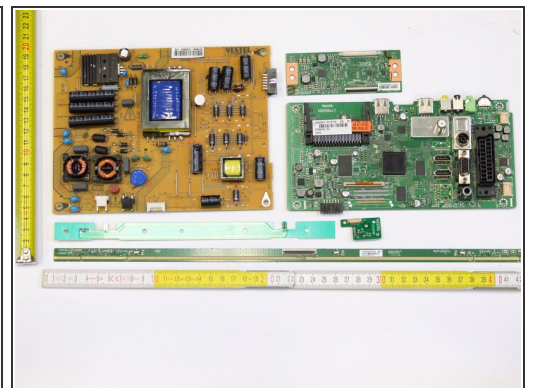
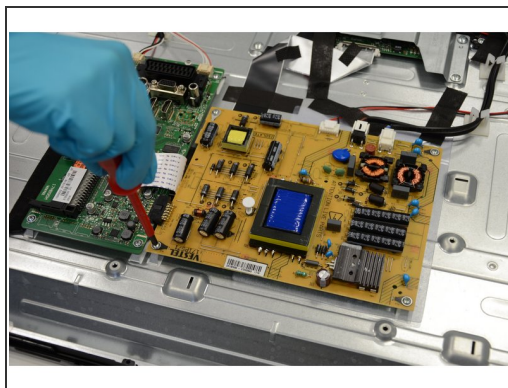
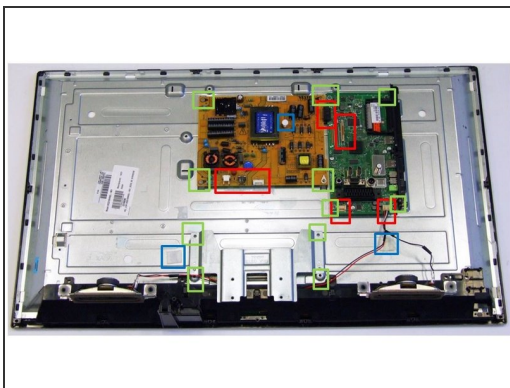


## Step 1 — Opening



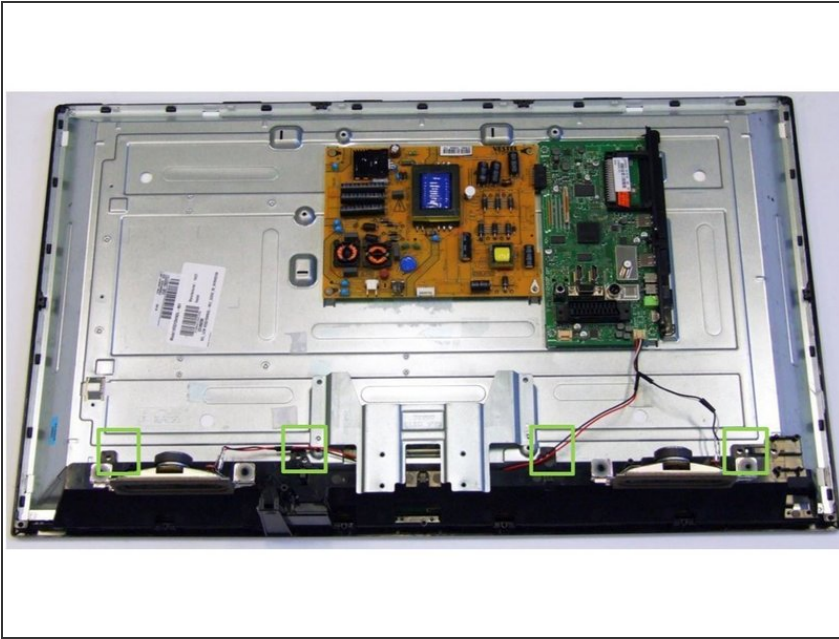
- Start the TV opening from the back side. The back cover is fastened with PH#2 screws (green marking).
- Using PH#1 screwdriver, finish loosening the last two screws, embedded in the connectors' housing.
- Manually pry open the sixteen clips and pull out the back cover.

## Step 2 — Removal of Printed Circuit Boards (PCB)



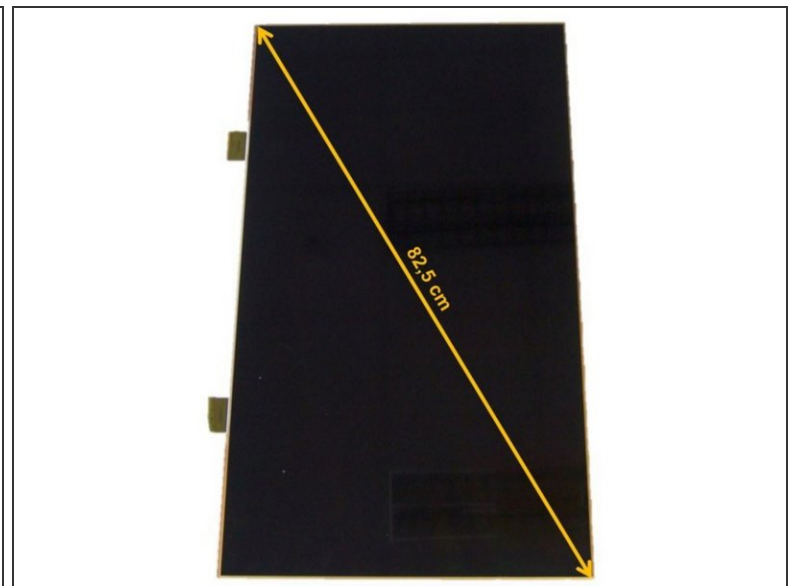
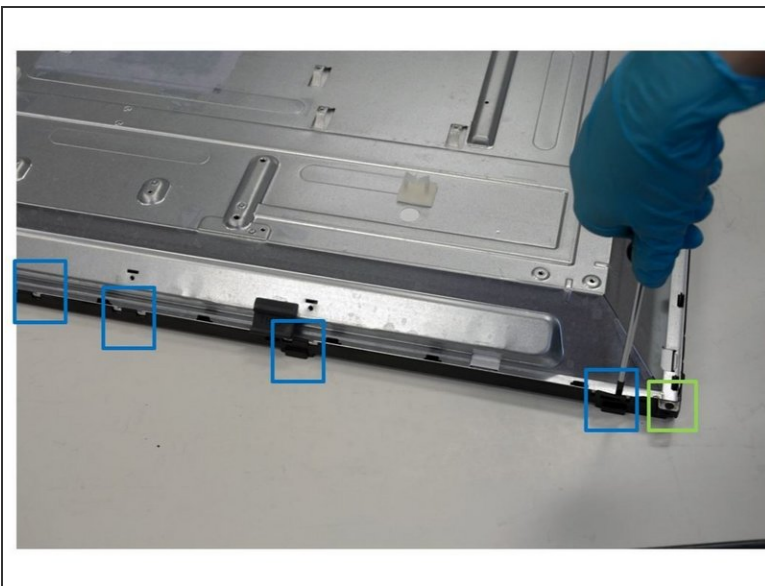
- Remove cables: Detach all eleven connectors (red boxes) and three clips (blue boxes), and rip off the tapes used to fix the cables to the metal casing.
- To remove the PCBs, pull out the twelve PH#1 screws (green boxes).

### Step 3 — Removal of Speakers



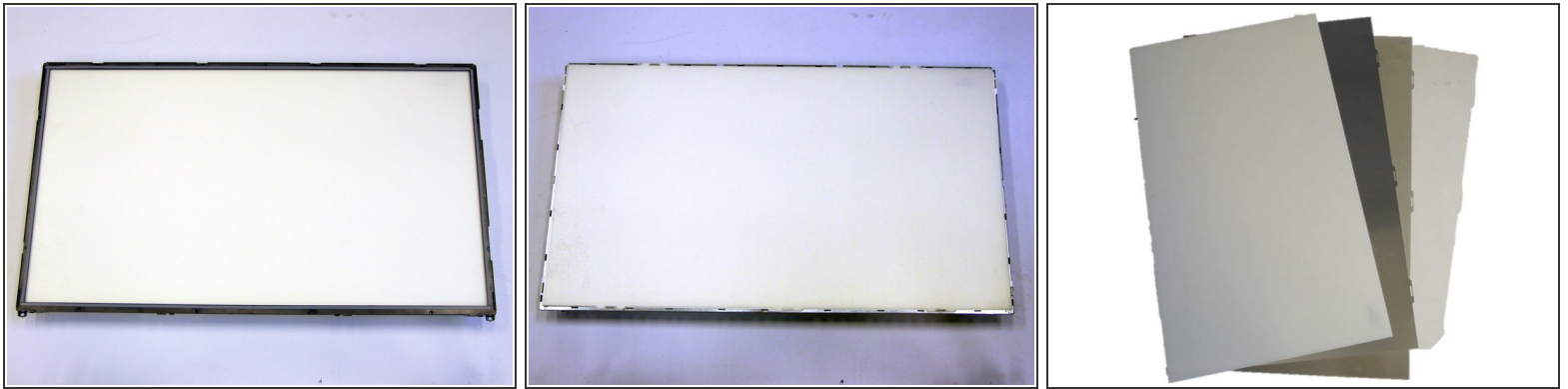
- Separate the speakers manually from their mountings (green boxes).

### Step 4 — Removal of Liquid Crystal Display (LCD)



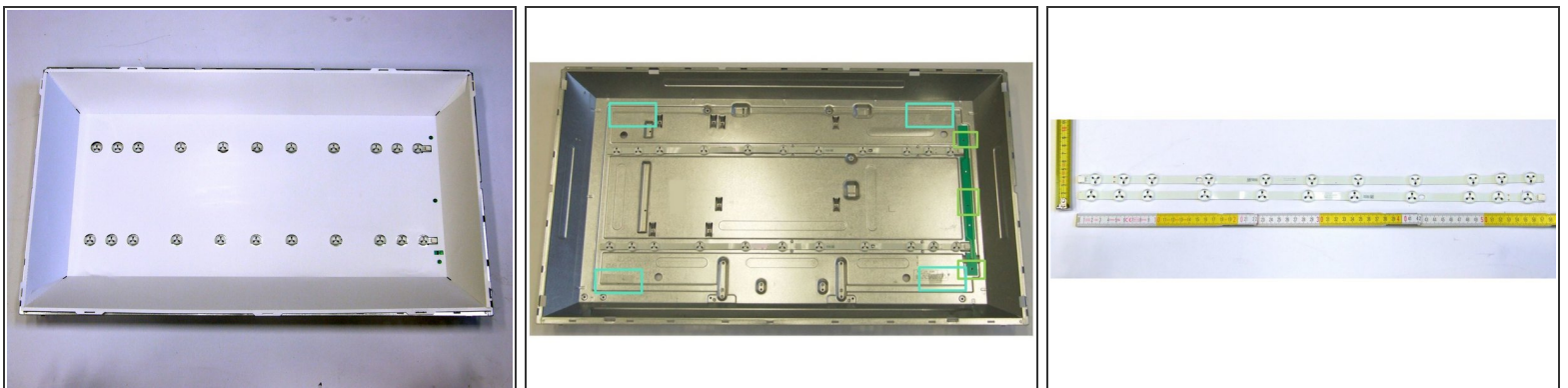
- To access the LCD panel, first loose four PH#1 screws.
- Next, using slotted screwdriver, release eighteen clips that fix the front frame (blue boxes).
- Carefully turn the screen upwards and remove the LCD panel.

## Step 5 — Removal of Polarized Foils



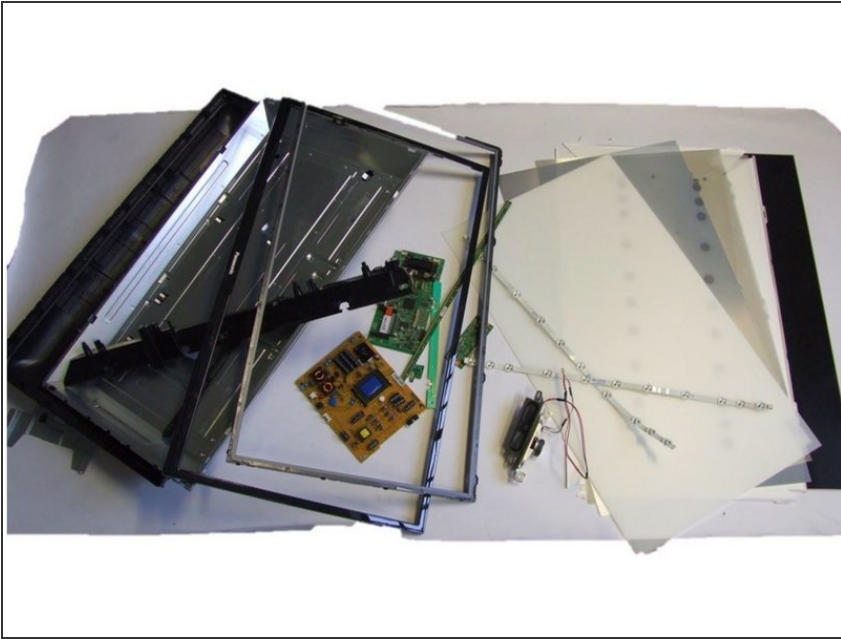
- Manually pull the frame off by levering the eighteen clips.
- Remove the polarized foils.

## Step 6 — Removal of Backlights (LED)



- Remove the protective foil from the two-sided adhesives (marked in blue) and access the backlight unit.
- Next, by releasing the three PH#1 screws, remove the small PCBs.
- Using slotted screwdriver, remove the LED strips.

## Step 7 — TV Dismantling Fractions



- All fractions obtained after TV dismantling.