



How to install and remove rear axle endcap plugs

Changing your rear hub from QR to 142, 142 to QR etc. etc.

Written By: The Hive - Jeremy



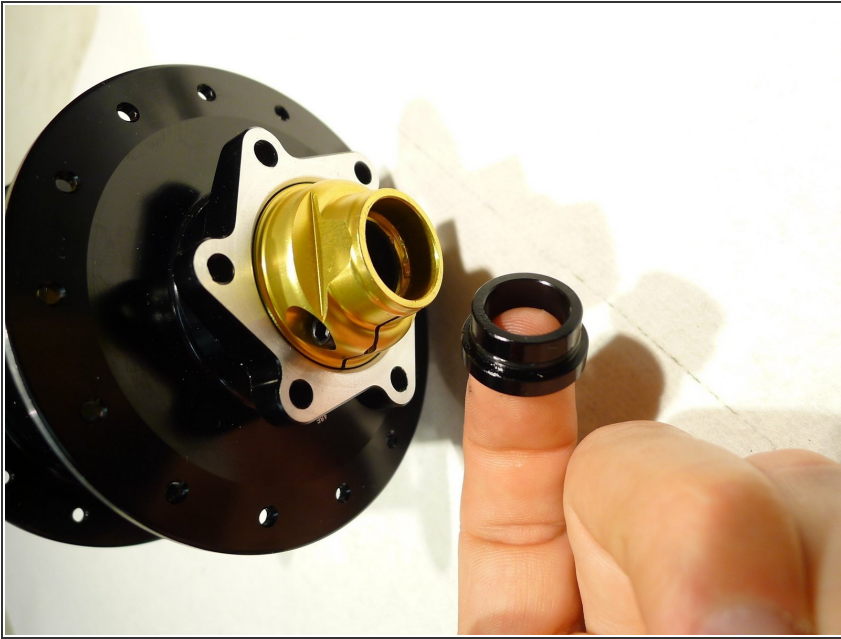
**TOOLS:**

- [Pick](#) (1)
- [17mm cone wrench](#) (1)
- [19mm cone wrench](#) (1)

**PARTS:**

- [Endcap plugs](#) (1)

Step 1 — How to install and remove rear axle endcap plugs



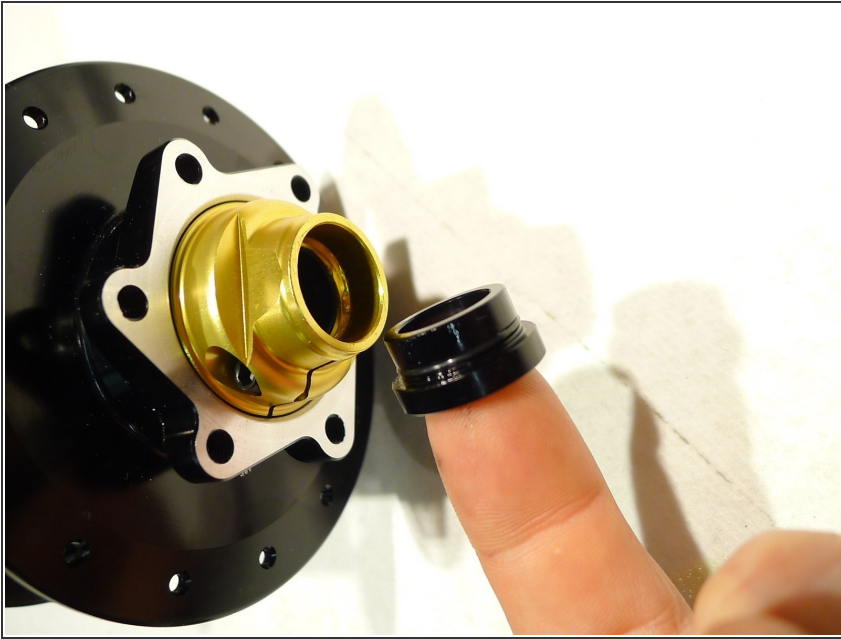
- All gen 2 rear hubs use endcap plugs to support various axle standards
- Endcap plugs press-in and can easily be swapped without taking the hub apart

Step 2



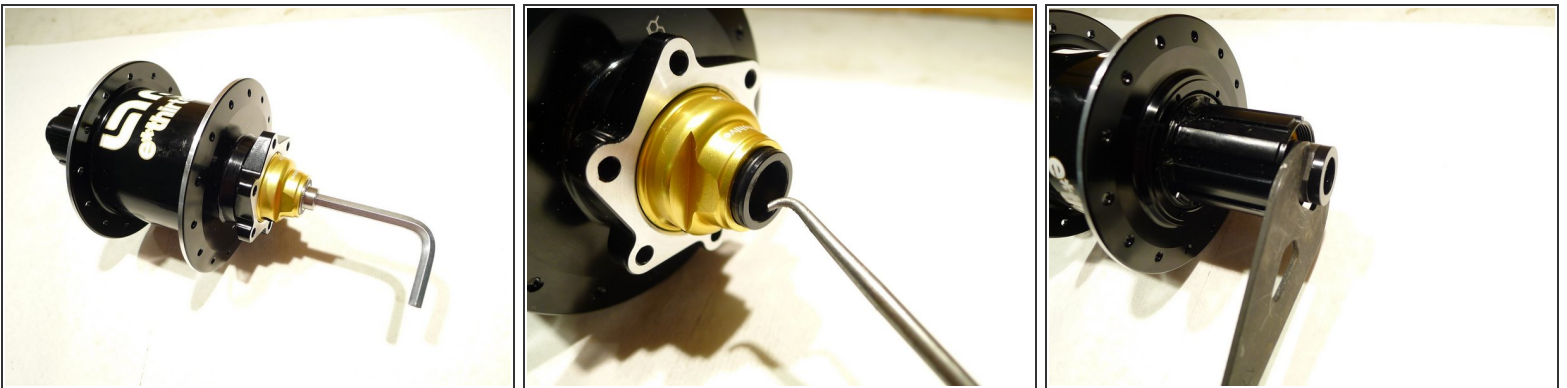
- Supported standards include:
- TRS hubs - Boost 148 X 12mm thru axle / QR 141
- TRS hubs - QR 135 / 135 X 12mm thru axle / 142 X 12mm thru axle
- LG1 hubs - QR 150 / 150x12 Thru Axle / 157 X 12 Thru Axle

Step 3



- Plugs are held in place with an O-ring.
- Be sure to grease the plugs before install
- 135x12 and 150x12 plugs will sit flush with the end of the hub axle/endcap

Step 4



- QR plugs can be removed by lightly tapping them out using an M5 hex wrench
- 135x12 plugs can be removed by pulling them from the lip on the backside using a pick
- 142x12 plugs can be removed by pulling on them using a 17mm (drive side) or 19mm (non-drive side) cone wrench
- Do not try to remove the plugs by pulling on them with pliers

Thanks for reading, now get out there and ride!