



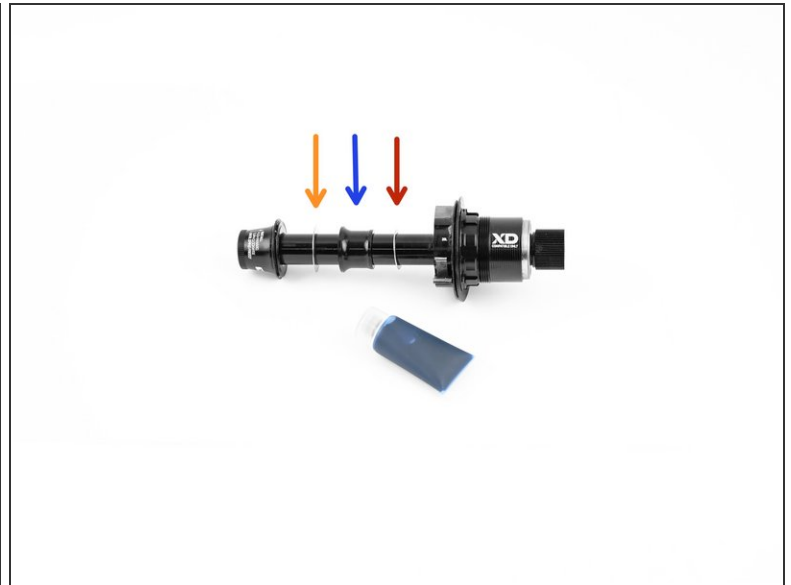
Aluminium Axle Install/Removal

How to install and remove all new 2019+ aluminum rear hub axles. No tools required!

Written By: Cory Sullivan



Step 1 — Alloy Axel Install



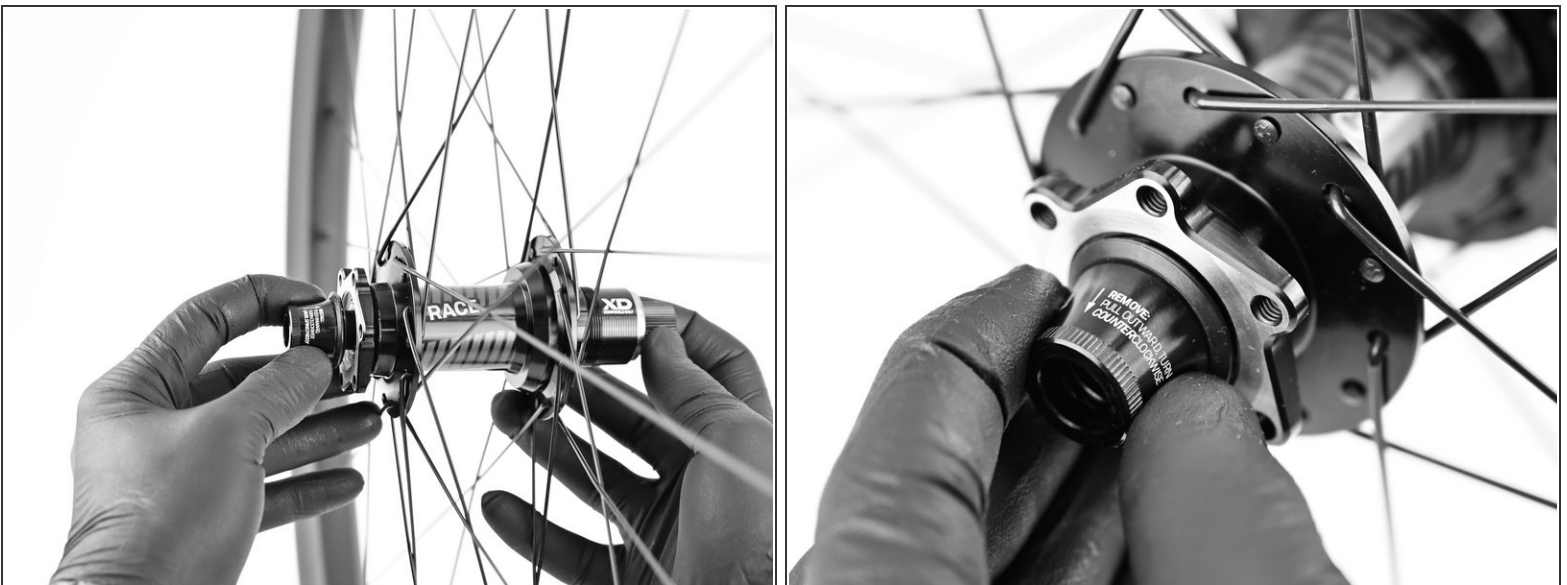
- Start with identifying what freehub you will be using on your hub. (Shimano and XD freehubs are available for all of our hubs)
- ⚠ Shimano freehubs require an additional washer on the outboard side of the axle configuration. XD freehubs do not require this.
- Make sure all axle spacers are in the correct locations.
 - "freehub washer" closest to freehub
 - 2 piece axle reducer sleeve
 - wear shim (thinner and slightly larger diameter then freehub washer)

Step 2 — Alloy Axel Install



- Slide axle spacers flush against freehub internals.
- ⓘ Grease the pawls, springs and ratchet ring with provided freehub grease.
- Insert the axle into the drive side of the hub.
- Gently apply pressure to the freehub and rotate counter clockwise. This will engage the pawls and seat the freehub in the hub shell.

Step 3 — Alloy Axel Install



- Install non-drive axle endcap. Apply pressure and tighten clockwise until endcap spins freely.

Step 4 — Alloy Axle Removal



- To remove axle pull non-drive endcap away from the hub while turning counter-clockwise.
- Once the non-drive endcap is removed you can pull the freehub and axle out of the hub shell.

Thanks for reading, now get out there and ride!